

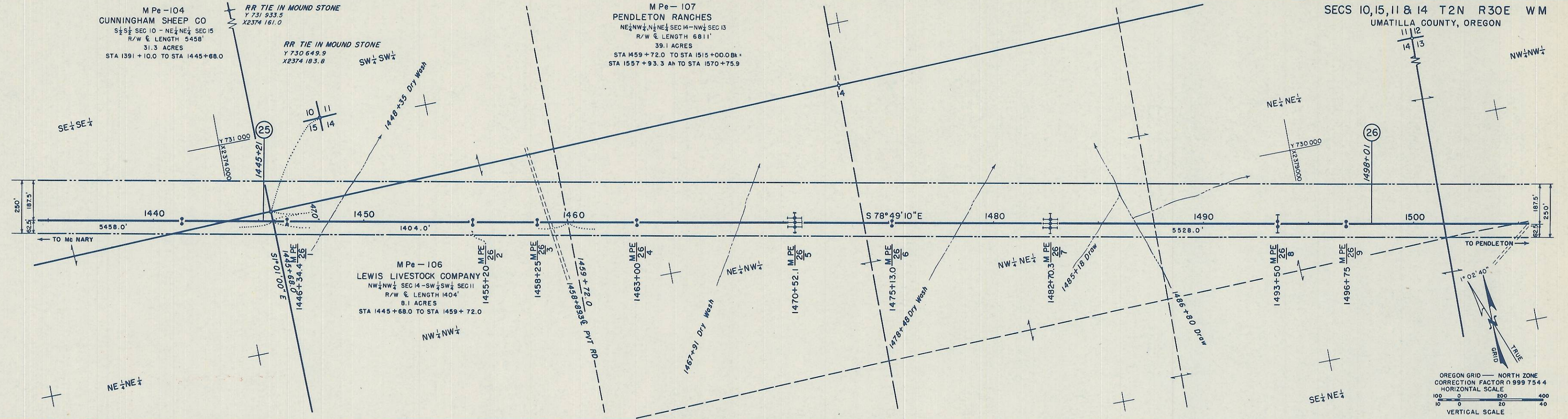
M Pe - 104
 CUNNINGHAM SHEEP CO
 5 1/2 SEC 10 - NE 1/4 SEC 15
 R/W & LENGTH 5458'
 31.3 ACRES
 STA 1391 + 10.0 TO STA 1445 + 68.0

RR TIE IN MOUND STONE
 Y 731 933.5
 X 2374 161.0

RR TIE IN MOUND STONE
 Y 730 649.9
 X 2374 183.8

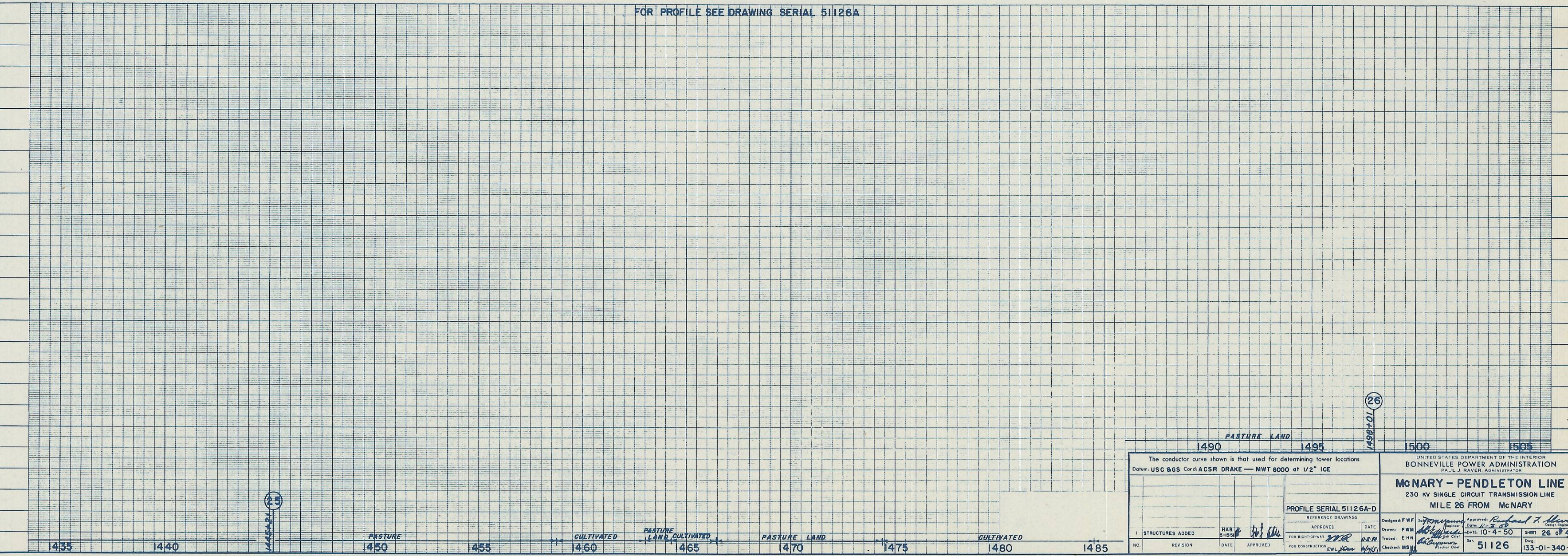
M Pe - 107
 PENDLETON RANCHES
 NE 1/4 NW 1/4, N 1/2 NE 1/4 SEC 14 - NW 1/4 SEC 13
 R/W & LENGTH 6811'
 39.1 ACRES
 STA 1459 + 72.0 TO STA 1515 + 00.0 Bk +
 STA 1557 + 93.3 AN TO STA 1570 + 75.9

SECS 10, 15, 11 & 14 T2N R30E WM
 UMATILLA COUNTY, OREGON



OREGON GRID - NORTH ZONE
 CORRECTION FACTOR 0.9997544
 HORIZONTAL SCALE
 100 0 200 400
 10 0 20 40
 VERTICAL SCALE

FOR PROFILE SEE DRAWING SERIAL 51126A



1490 PASTURE LAND 1495		1500 1505	
The conductor curve shown is that used for determining tower locations Datum: USG BGS Cond: ACSR DRAKE - MWT 8000 at 1/2" ICE			
UNITED STATES DEPARTMENT OF THE INTERIOR BONNEVILLE POWER ADMINISTRATION PAUL J. RAVER, ADMINISTRATOR		MGNARY - PENDLETON LINE 230 KV SINGLE CIRCUIT TRANSMISSION LINE MILE 26 FROM McNARY	
PROFILE SERIAL 51126A-D			
REFERENCE DRAWINGS			
DESIGNED: FWF	APPROVED: [Signature]	DATE: 11-2-50	DESIGN ENGINEER: [Signature]
DRAWN: FWF	TRACED: EHM	DATE: 10-4-50	SHEET 26 OF 40
CHECKED: MSJ	FOR CONSTRUCTION: [Signature]	SERIAL: 51126	DWG: 133-01-340-D1