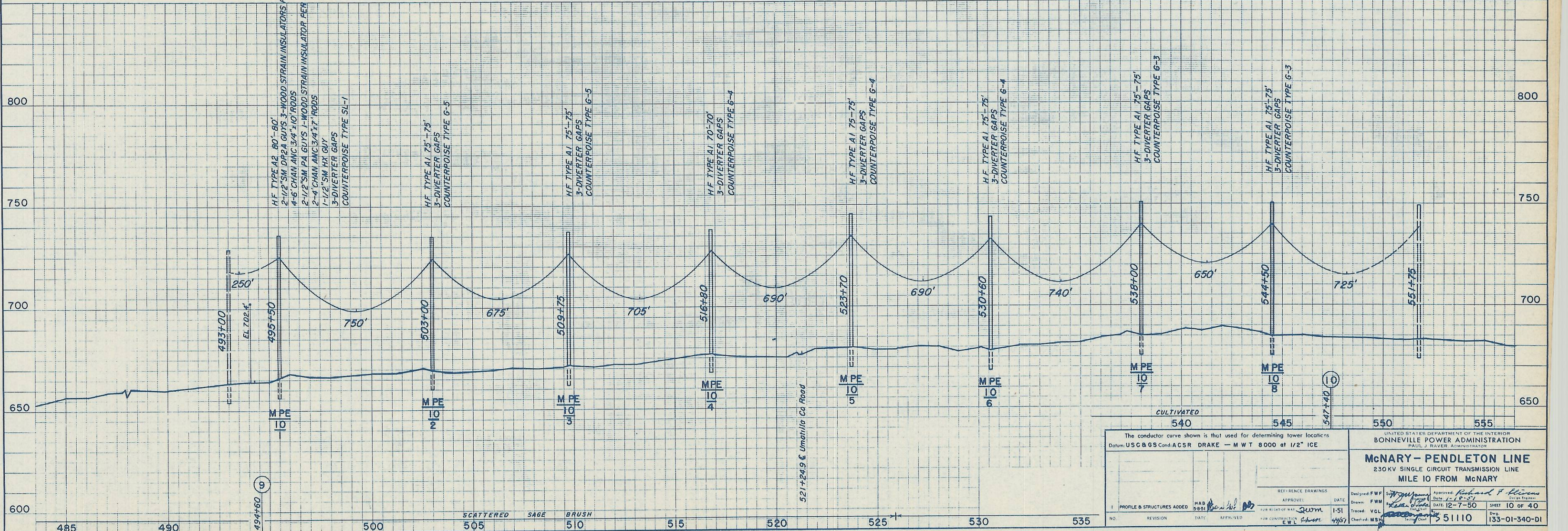
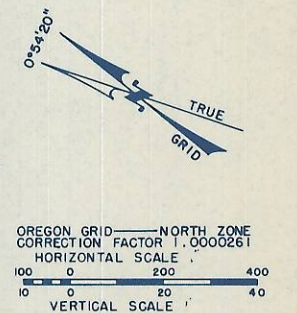
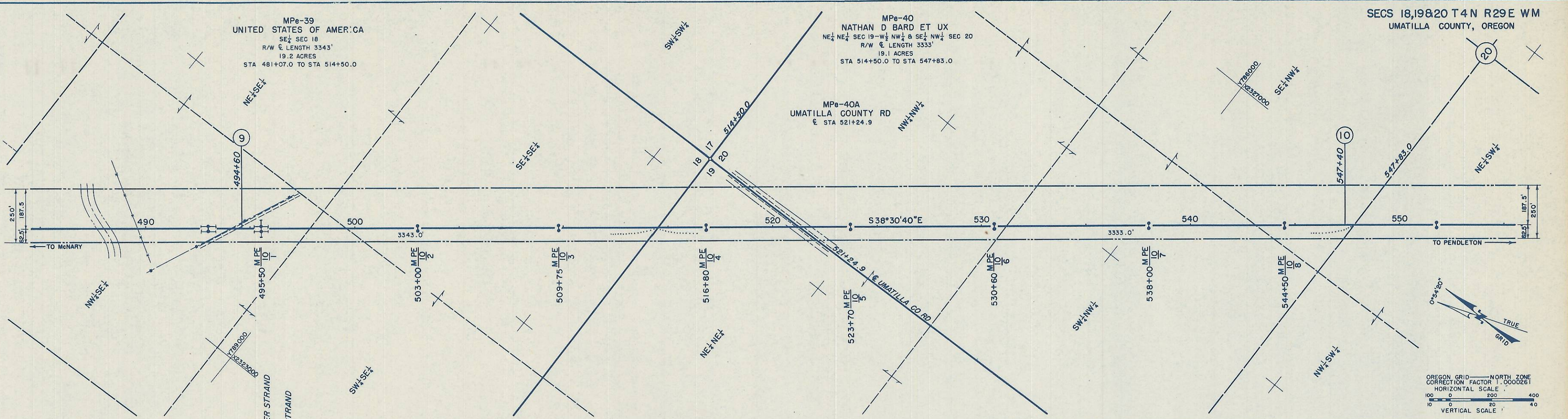


MPe-39  
UNITED STATES OF AMERICA  
SE 1/4 SEC 18  
R/W & LENGTH 3343'  
19.2 ACRES  
STA 481+07.0 TO STA 514+50.0

MPe-40  
NATHAN D BARD ET UX  
NE 1/4 NE 1/4 SEC 19 - W 1/4 NW 1/4 & SE 1/4 NW 1/4 SEC 20  
R/W & LENGTH 3333'  
19.1 ACRES  
STA 514+50.0 TO STA 547+83.0

MPe-40A  
UMATILLA COUNTY RD  
& STA 521+24.9



H.F. TYPE A2 80'-80'  
2-1/2\" SM DP2A GUYS 3-WOOD STRAIN INSULATORS PER STRAND  
4-6\" CHAIN ANC 3/4\" x 10\" RODS  
2-1/2\" SM PA GUYS 1-WOOD STRAIN INSULATOR PER STRAND  
1-1/2\" SM HX GUY  
3-DIVERTER GAPS  
COUNTERPOISE TYPE SL-1

H.F. TYPE A1 75'-75'  
3-DIVERTER GAPS  
COUNTERPOISE TYPE G-5

H.F. TYPE A1 75'-75'  
3-DIVERTER GAPS  
COUNTERPOISE TYPE G-5

H.F. TYPE A1 70'-70'  
3-DIVERTER GAPS  
COUNTERPOISE TYPE G-4

H.F. TYPE A1 75'-75'  
3-DIVERTER GAPS  
COUNTERPOISE TYPE G-4

H.F. TYPE A1 75'-75'  
3-DIVERTER GAPS  
COUNTERPOISE TYPE G-4

H.F. TYPE A1 75'-75'  
3-DIVERTER GAPS  
COUNTERPOISE TYPE G-3

H.F. TYPE A1 75'-75'  
3-DIVERTER GAPS  
COUNTERPOISE TYPE G-3

CULTIVATED  
540 545 550 555

The conductor curve shown is that used for determining tower locations  
Datum: USC & G.S. Cont. ACSR DRAKE - MWT 8000 at 1/2\" ICE

UNITED STATES DEPARTMENT OF THE INTERIOR  
BONNEVILLE POWER ADMINISTRATION  
PAUL J. RAVER, ADMINISTRATOR

**McNARY - PENDLETON LINE**  
230KV SINGLE CIRCUIT TRANSMISSION LINE  
MILE 10 FROM McNARY

DESIGNED: FWF	APPROVED: Richard P. Higgins
DRAWN: FWH	DATE: 12-7-50
TRACED: VGL	CHECKED: MSB
DATE: 1-1-51	DATE: 1-1-51
CONTRIBUTOR: E.W.L. Brown	DATE: 4/57

NO. REVISION DATE APPROVED

SHEET 10 OF 40  
Proj. No. 51110  
Draw. No. 133-01-340-D1