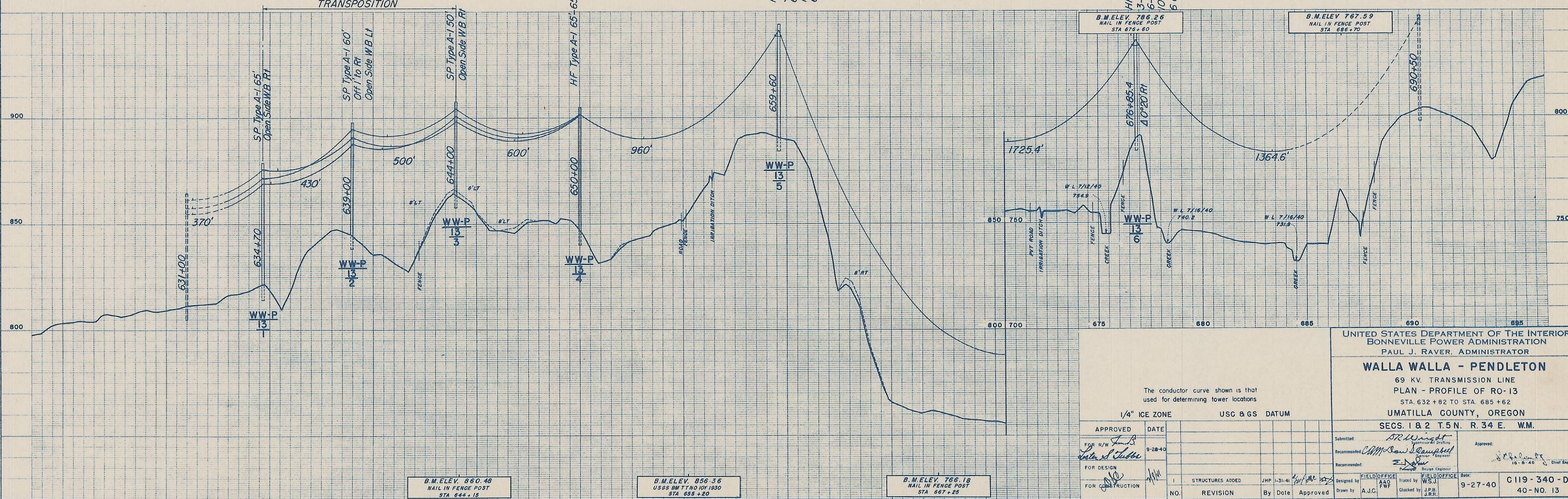
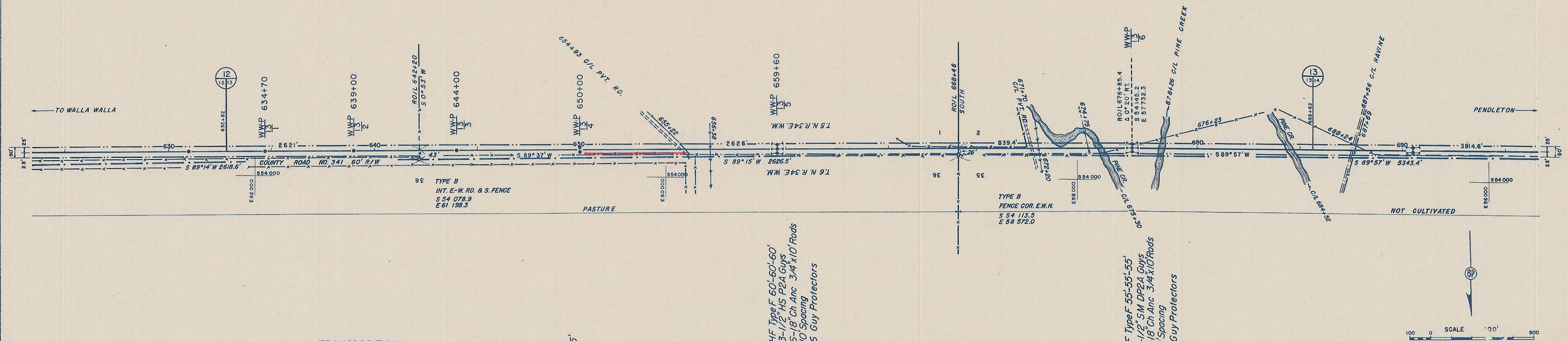


NE⁴ SECTION 1
C. M. WHITE
WPE-30 3.01 ACRES
C/L R/W LENGTH 2621 FT.

NW⁴ SECTION 1
BRADLEY W. YOUNG
WPE-31 3.01 ACRES
C/L R/W LENGTH 2626 FT.

COUNTY ROAD NO. 341
WPE-30A
R/W WIDTH 60 FT.

N²N² SECTION 2
BRADLEY W. YOUNG ET UX
WPE-31 6.13 ACRES
C/L R/W LENGTH 5343 FT.



UNITED STATES DEPARTMENT OF THE INTERIOR
BONNEVILLE POWER ADMINISTRATION
PAUL J. RAVER, ADMINISTRATOR

WALLA WALLA - PENDLETON
69 KV. TRANSMISSION LINE
PLAN - PROFILE OF R0-13
STA. 632+82 TO STA. 685+62
UMATILLA COUNTY, OREGON
SECS. 1 & 2 T5N. R. 34 E. W.M.

The conductor curve shown is that used for determining tower locations

1/4" ICE ZONE USC & GS DATUM

APPROVED	DATE		
FOR R/W	9-28-40		
FOR DESIGN			
FOR CONSTRUCTION			

Submitted: *DR Wright*
Recommended: *CM Saw*
Recommended: *E. J. ...*

FIELD OFFICE: A.J.C. W.F.W.
Checked by: J.P.B. J.R.R.

STRUCTURES ADDED: JHP 1-31-41
NO. REVISION: By Date Approved

Date: 9-27-40
C119-340-D1
40-NO. 13