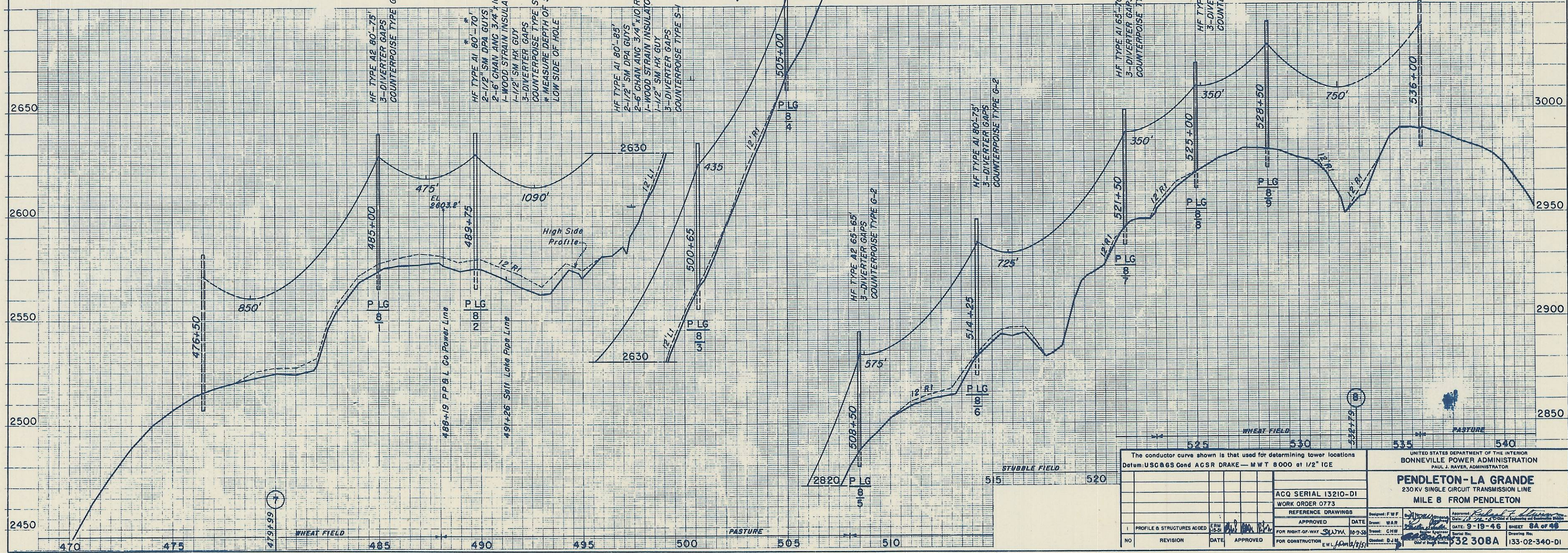
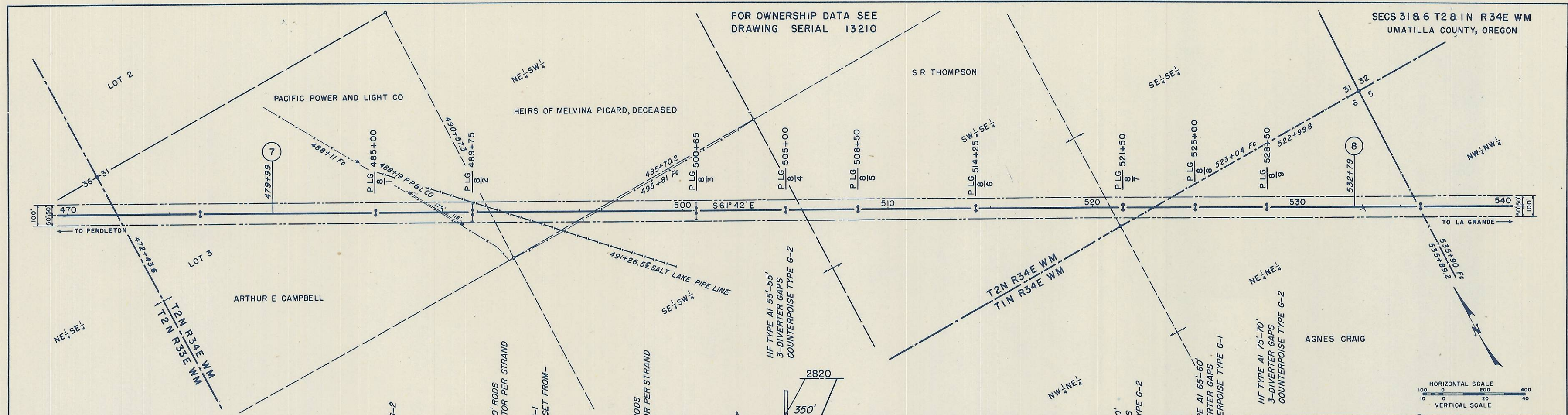


FOR OWNERSHIP DATA SEE
DRAWING SERIAL 13210

SECS 31 & 6 T2 & 1 N R34E WM
UMATILLA COUNTY, OREGON



The conductor curve shown is that used for determining tower locations Datum: USC&GS Cond ACSR DRAKE - MWT 8000 at 1/2" ICE		UNITED STATES DEPARTMENT OF THE INTERIOR BONNEVILLE POWER ADMINISTRATION PAUL J. RAY, ADMINISTRATOR	
ACQ SERIAL 13210-D1 WORK ORDER 0773		PENDLETON-LA GRANDE 230KV SINGLE CIRCUIT TRANSMISSION LINE MILE B FROM PENDLETON	
REFERENCE DRAWINGS APPROVED DATE FOR RIGHT-OF-WAY SURVEY 10-3-50 FOR CONSTRUCTION E.W.L. 10/1/51	DESIGNED: F.W.F. DRAWN: W.A.R. CHECKED: CHW. DATE: 9-19-46 SHEET: 8A OF 88	32 308A 133-02-340-D1	