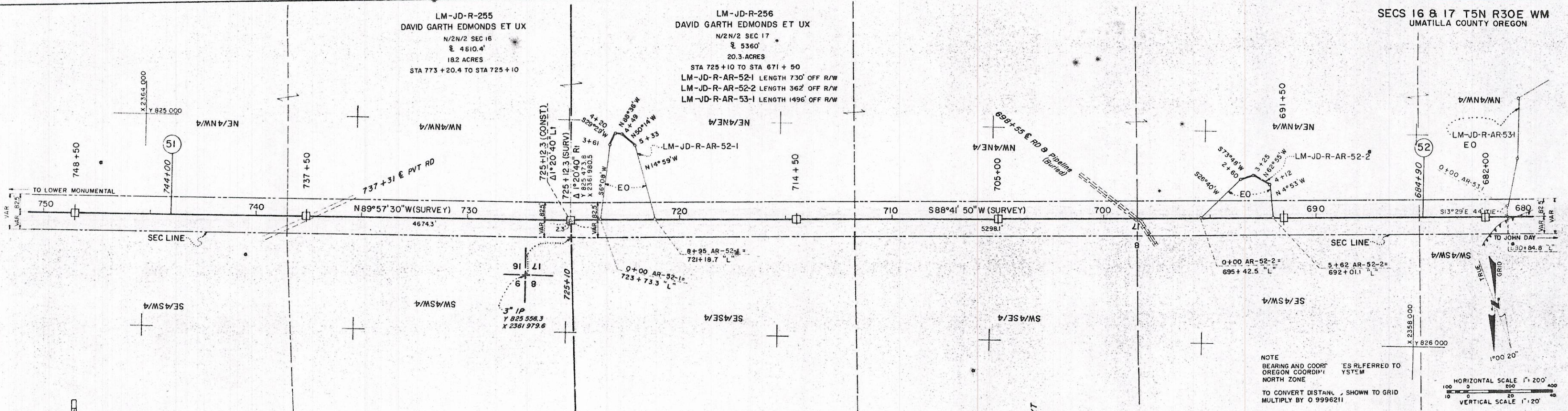


SECS 16 & 17 T5N R30E WM  
UMATILLA COUNTY OREGON

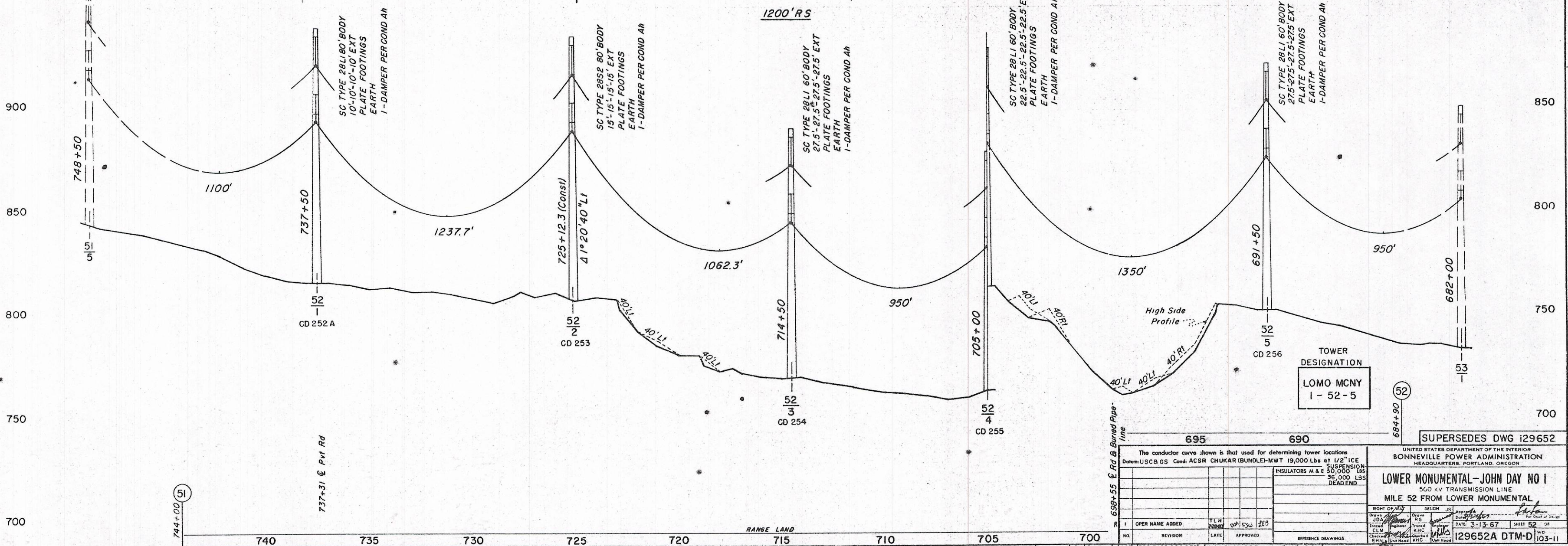
LM-JD-R-255  
DAVID GARTH EDMONDS ET UX  
N/2N/2 SEC 16  
4610.4'  
182 ACRES  
STA 773 + 20.4 TO STA 725 + 10

LM-JD-R-256  
DAVID GARTH EDMONDS ET UX  
N/2N/2 SEC 17  
5360'  
20.3 ACRES  
STA 725 + 10 TO STA 671 + 50  
LM-JD-R-AR-52-1 LENGTH 730' OFF R/W  
LM-JD-R-AR-52-2 LENGTH 362' OFF R/W  
LM-JD-R-AR-53-1 LENGTH 1496' OFF R/W



NOTE  
BEARING AND COORDINATES REFERRED TO OREGON COORDINATE SYSTEM NORTH ZONE  
TO CONVERT DISTANCE SHOWN TO GRID MULTIPLY BY 0.9996211

HORIZONTAL SCALE 1" = 200'  
VERTICAL SCALE 1" = 20'



The conductor curve shown is that used for determining tower locations Date: USC BGS Cond: ACSR CHUKAR (BUNDLE)-MWT 19,000 Lbs at 1/2" ICE SUSPENSION: 30,000 LBS INSULATORS M & E 30,000 LBS 36,000 LBS DEADEND		UNITED STATES DEPARTMENT OF THE INTERIOR BONNEVILLE POWER ADMINISTRATION HEADQUARTERS, PORTLAND, OREGON	
OPER NAME ADDED		DESIGN	
REVISION		DATE	
APPROVED		DATE	
REFERENCE DRAWINGS		DATE	
129652A		129652A DTM-D	

OPER AS LOWER MONUMENTAL-MC NARY NO. 1