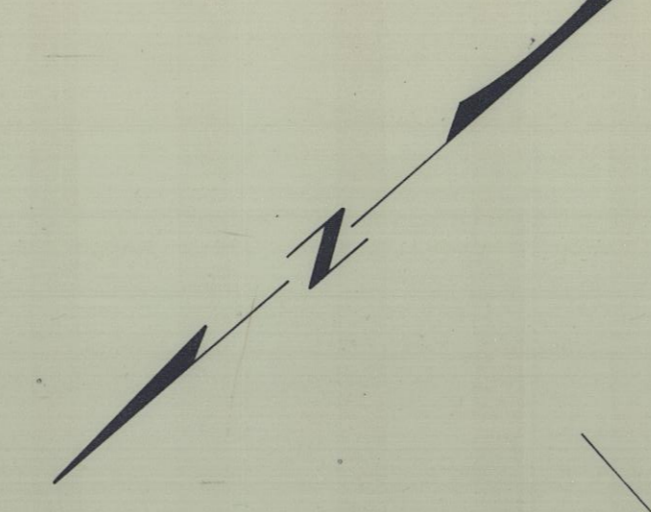


T.1N. R.34E. W.M.  
8B-36-25



O. McCormach

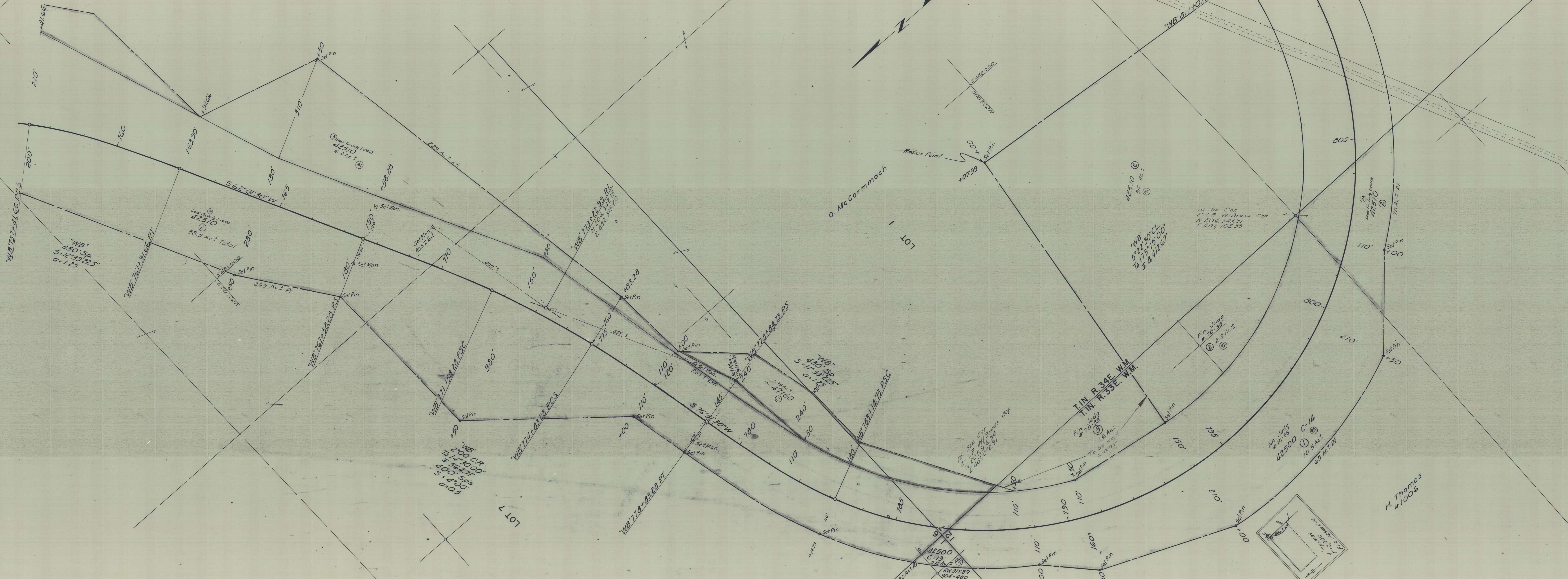
LOT 1

T.1N. R.34E. W.M.  
R.35E. W.M.

H. Thomas  
#1006

Red W.C. Cop.  
2" I.P. W/Brass Cap  
N 60° 53' 00" E  
E 473.79032

N.H. Peterson  
#591



"WB" 450 SP  
51° 55' 25"  
0.175

"WB" 450  
38.5 Ac Total

"WB" 400 CR  
74° 36' 41"  
400 Spk  
5-9-05

"WB" 450 SP  
5-11-25  
0.175

"WB" 522 20 CL  
78 1 3 15 50  
3 8 41 26

Fin. Judg  
#1038  
2.3 Ac ±

Fin. Judg  
#1038  
10.5 Ac ±