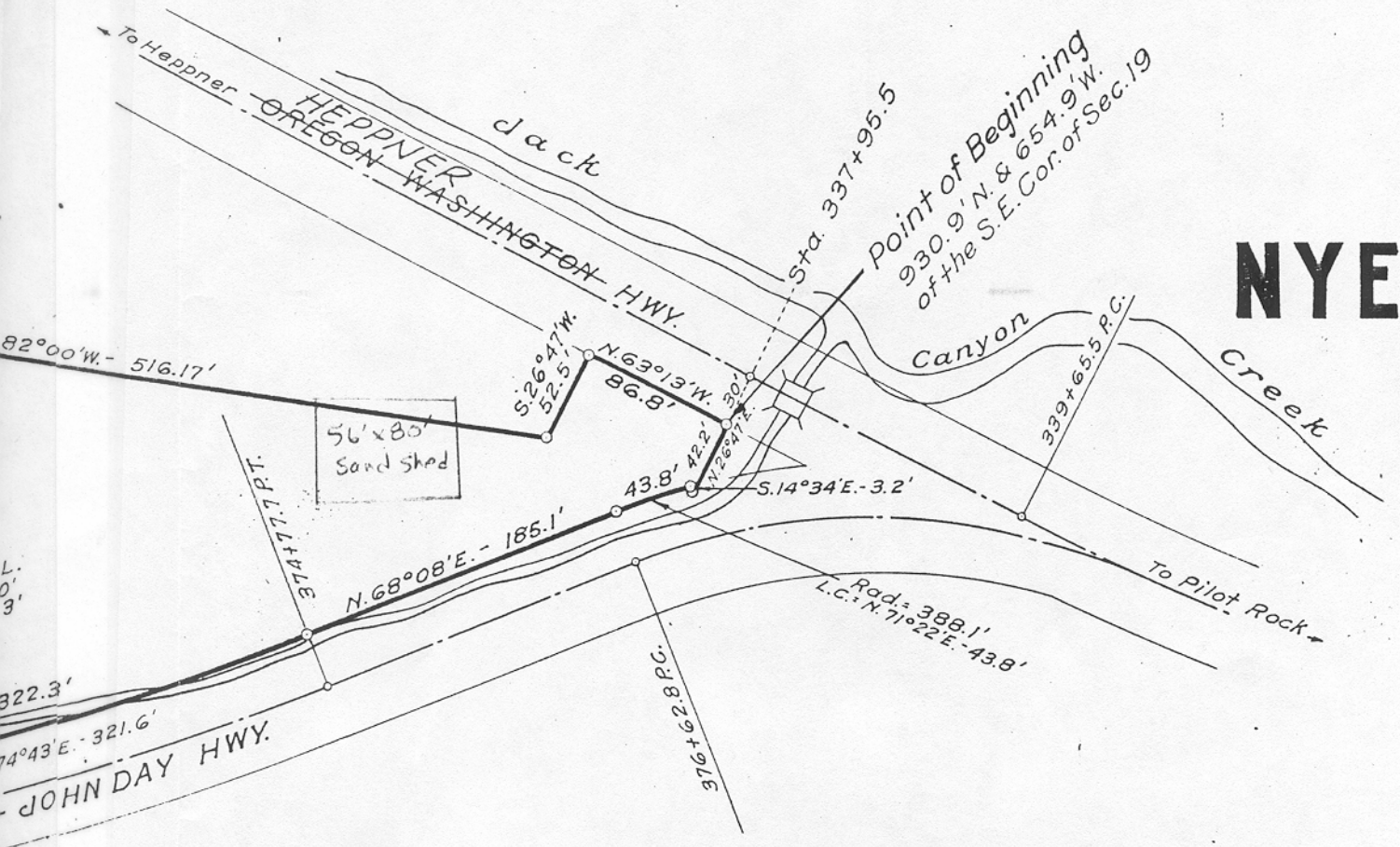


R. 31E., W.M.

E. 1/4 - Sec. 19



NYE

MP 23.64

Q-306

OREGON STATE HIGHWAY DEPARTMENT	
Acquired from	James B. Stanton
For	QUARRY SITE
Highway	Pendleton-John Day
County	Umatilla
Scale $1" = 100'$	Date Aug. 1932

4B-10-5(100') 5B-33-2
 2B-22-3(400') 3B-??-9 1931