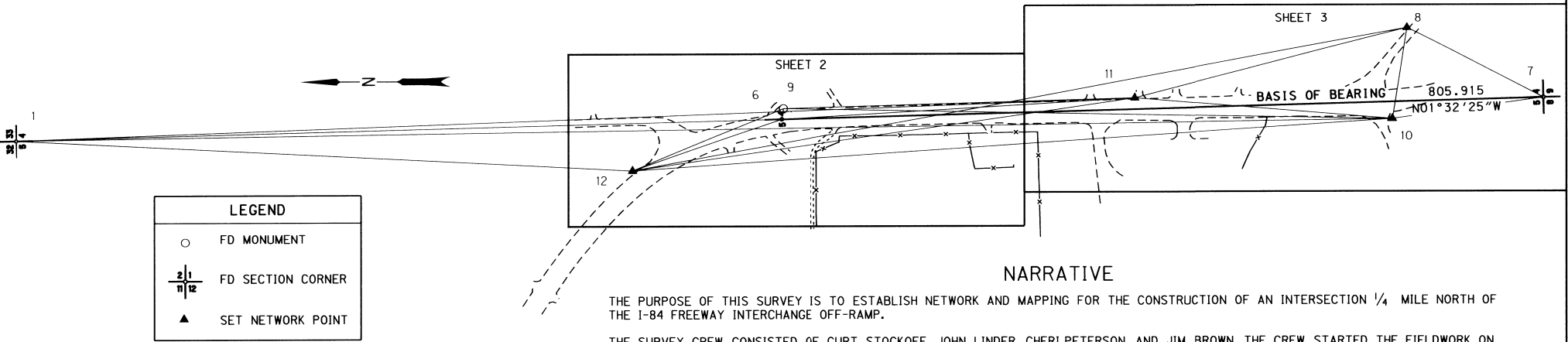


E. 1/2 SEC. 4 & W. 1/2 SEC. 5 T.3 N. R.29 E. W.M.



LEGEND	
○	FD MONUMENT
⊥ ⊥	FD SECTION CORNER
▲	SET NETWORK POINT

NETWORK BEARING AND DISTANCE TABLE

AT	TO	DISTANCE	BEARING
1	6	809.938	S01°32'29\"E
1	10	1456.278	S00°49'56\"E
1	11	1185.025	S02°06'60\"E
1	12	652.812	S02°55'52\"W
6	9	11.503	S81°13'26\"E
6	11	375.215	S03°21'31\"E
6	12	167.059	N19°16'57\"W
7	8	161.353	N26°58'26\"E
7	10	160.699	N07°58'31\"W
8	10	96.708	N80°52'12\"W
8	11	269.351	N14°14'03\"W
8	12	833.129	N10°22'25\"W
9	10	644.836	S01°03'59\"W
9	11	372.967	S01°37'51\"E
9	12	172.768	N22°39'03\"W
10	11	272.847	N04°45'16\"E
10	12	806.013	N03°52'46\"W
11	12	537.820	N08°14'51\"W

NARRATIVE

THE PURPOSE OF THIS SURVEY IS TO ESTABLISH NETWORK AND MAPPING FOR THE CONSTRUCTION OF AN INTERSECTION 1/4 MILE NORTH OF THE I-84 FREEWAY INTERCHANGE OFF-RAMP.

THE SURVEY CREW CONSISTED OF CURT STOCKOFF, JOHN LINDER, CHERI PETERSON, AND JIM BROWN. THE CREW STARTED THE FIELDWORK ON FEBRUARY 06, 2001 AND COMPLETED IT ON MARCH 02, 2001. THIS SURVEY TOOK PLACE IN TOWNSHIP 3 NORTH; RANGE 29 EAST; SECTIONS 4 & 5. THE NETWORK WAS RETIED FOR FILING AND THE COORDINATES ASSUMED TO MATCH THE THEILSON ROAD COORDINATES. THE NETWORK WAS REDONE BY BRENT REYNOLDS AND TONY BASHAW JANUARY 22, 2002.

NETWORK POINT 1 IS A FOUND 2 1/2\" BRASS DISK MARKED \"T3 & 4N R29E S32 S33 S5 S4, 1984 PLS 933\". NETWORK POINT 6 IS A FOUND RAIL ROAD SPIKE. THE 1/4 CORNER T3N R 29E S5 :S4. NETWORK POINT 7 IS A FOUND 2 1/2\" BRASS DISK MARKED \"T3N R29E 4 5 8 9\". NETWORK POINT 8 IS A SET 5/8\" X 30\" PIN WITH ALUMINUM CAP STAMPED \"8\". NETWORK POINT 9 IS A FOUND 2 1/2\" BRASS DISK MARKED \"T3N R 29E S5 :S4 W C, 1998 PLS 852\". NETWORK POINT 10 IS A SET 5/8\" X 30\" PIN WITH ALUMINUM CAP STAMPED \"10\". NETWORK POINT 11 IS A SET RAIL ROAD SPIKE WITH PUNCH MARK. NETWORK POINT 12 IS A SET 5/8\" X 30\" PIN WITH ALUMINUM CAP STAMPED \"12\".

THE BASIS OF BEARING FOR THIS SURVEY IS THE SECTION LINE BETWEEN NETWORK POINTS 7 AND 6, N 01°32'25\" W FROM COUNTY SURVEY NO. 98-155-C. POINT 7 WAS ASSIGNED COORDINATES N 20000 AND E 70000. THE COORDINATES FOR POINT 6 WERE CALCULATED WITH THE RECORD BEARING AND CALCULATED DISTANCE 805.915 METERS. THE RECORDED DISTANCE 2644.00 FT CONVERTED TO METRIC IS 805.891 METERS. THE COORDINATES FOR POINT 1 WERE ALSO CALCULATED WITH THE RECORD BEARING AND THE MEASURED DISTANCE 809.938. THE RECORDED DISTANCE 2657.25 FT CONVERTED TO METRIC IS 809.930 METERS. POINTS 6, 7, & 1 WERE HELD AS FIXED COORDINATES. HORIZONTAL LEAST SQUARES ADJUSTMENT WAS CALCULATED IN LISCAD TO ESTABLISH NETWORK COORDINATES. THE ANGULAR RESIDUALS AVERAGED 1.3 SECONDS, WITH THE GREATEST RESIDUAL BEING 5 SECONDS. THE DISTANCE RESIDUALS AVERAGED 1.3 MM, WITH THE GREATEST RESIDUAL BEING 5 MM. THE NETWORK MEETS ODOT STANDARDS.

THE VERTICAL DATA FOR THIS PROJECT WAS OBTAINED FROM BENCH MARK U B 10 S.I.D. DATUM 1983 WITH 1991 ADJUSTMENT. BUREAU OF RECLAMATION CONVERTED TO METRIC 192.179.

THE DATA WAS OBTAINED, EDITED AND CONVERTED TO A TERRAIN MODEL BY LISCAD (4.1).

NETWORK POINT COORDINATE TABLE

PT	EASTING	NORTHING	DESCRIPTION & REFERENCE DOC
1	69956.551	21615.269	FD 2 1/2\" BRASS DISK MARKED T3&4N R29E S32 S33 S5 S4 1984 PLS 933, 99-256-B, 96-29-B, 98-17-B, 98-155-C, 01-14-C
6	69978.337	20805.624	FD RAILROAD SPIKE 1/4 CORNER T3N R29E S5:S4, 98-155-C
7	70000.000	20000.000	FD 2 1/2\" BRASS DISK MARKED T3N R29E 4 5 8 9, 99-256-B, 96-19-B, 98-17-B, 98-155-C, 01-14-C
8	70073.187	20143.800	SET 5/8\" X 30\" IRON REBAR W/ALUM CAP STAMPED 8
9	69989.705	20803.869	FD 2 1/2\" BRASS DISK MARKED T3N R29E S5:S4 W C 1998 PLS 852, 99-256-B
10	69977.704	20159.145	SET 5/8\" X 30\" IRON REBAR W/ALUM CAP STAMPED 10
11	70000.319	20431.053	SET RAILROAD SPIKE W/PUNCH MARK
12	69923.170	20963.311	SET 5/8\" X 30\" IRON REBAR W/ALUM CAP STAMPED 12

RECEIVED BY
 Umatilla County Surveyors
 Date: 7-02
 Rec'd By: [Signature]
 No. 02-181-B



BASIS OF BEARING AND CONTROL NETWORK SCHEMATIC
 NOT TO SCALE

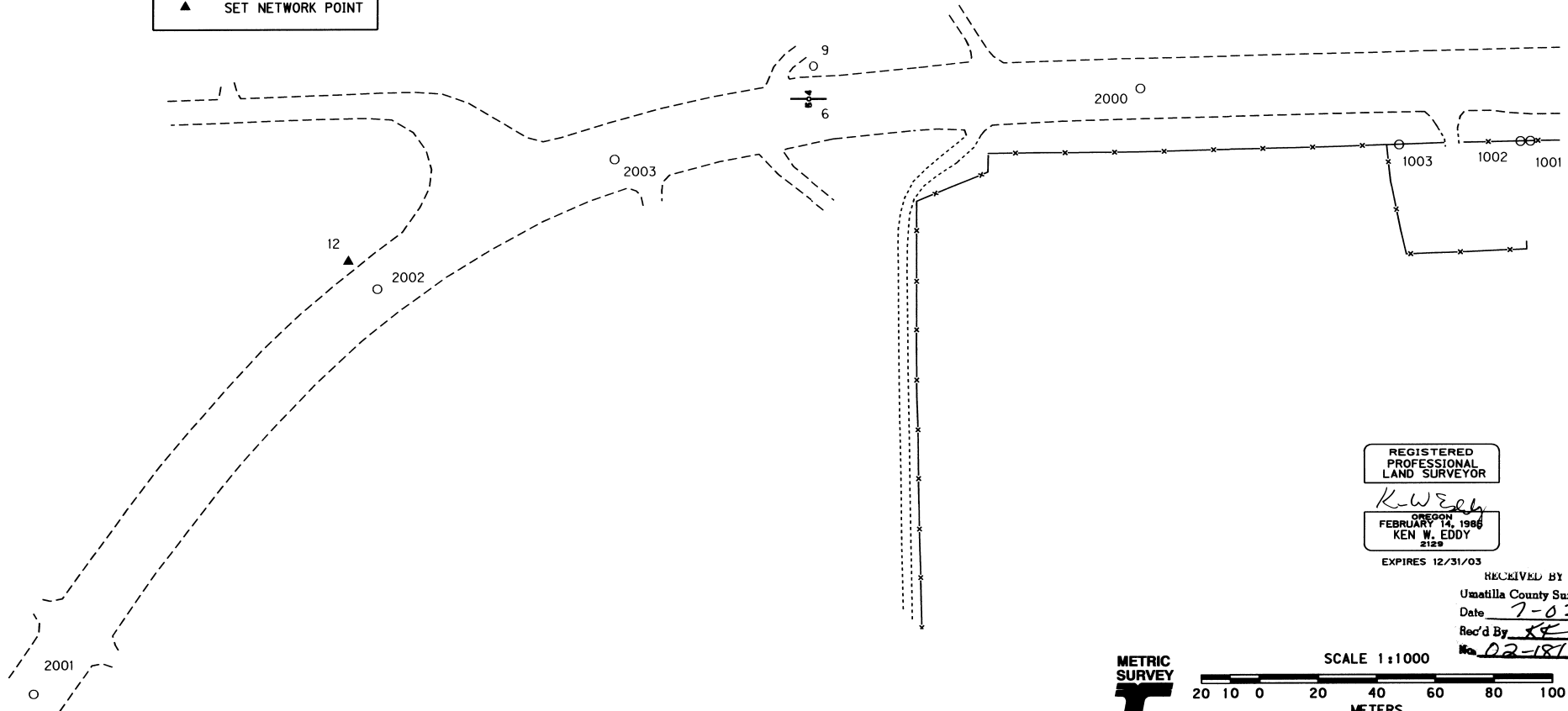
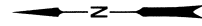
REGISTERED PROFESSIONAL LAND SURVEYOR
 [Signature]
 OREGON
 FEBRUARY 14, 1985
 KEN W. EDDY
 2129
 EXPIRES 12/31/03

OREGON DEPARTMENT OF TRANSPORTATION
 HORIZONATL CONTROL AND RECOVERY MAP
 STANFIELD INTERCHANGE (PILOT TRUCK STOP)
 HWY 395 UMATILLA - STANFIELD
 UMATILLA COUNTY

FOR O.D.O.T. REGION 5 80788 KIK RD., HERMISTON, OR 97838
 MARCH 26, 2002 SHEET 1 OF 3

E. 1/2 SEC. 4 & W. 1/2 SEC. 5 T.3 N. R.29 E. W.M.

LEGEND	
○	FD MONUMENT
$\frac{2\frac{1}{2}}{12}$	FD SECTION CORNER
▲	SET NETWORK POINT



REGISTERED
PROFESSIONAL
LAND SURVEYOR

K.W. Eddy
OREGON
FEBRUARY 4, 1986
KEN W. EDDY
212*

EXPIRES 12/31/03

RECEIVED BY
Umatilla County Surveyor
Date 7-02
Rec'd By KE
No. 02-181-B



SCALE 1:1000



TO CONVERT METERS TO FEET DIVIDE BY 0.3048

RECOVERED MONUMENT LIST

PT	EASTING	NORTHING	DESCRIPTION & REFERENCE DOCUMENTS
1001	69963.691	20558.232	FD 5/8" IRON REBAR W/YELLOW PLASTIC CAP #2786, 98-17-B
1002	69963.592	20561.598	FD 5/8" IRON REBAR W/YELLOW PLASTIC CAP #872, 96-29-B, 98-17-B
1003	69962.491	20603.040	FD 5/8" IRON REBAR W/YELLOW PLASTIC CAP #872, 96-29-B, 98-17-B, STATE R/W MAP 9B-29-7
2000	69981.693	20691.644	FD 3" BRASS CAP IN MONUMENT BOX OR STATE HWY DIV 1991, 647+30.93 PT, 92-85-B
2001	69774.863	21071.022	FD 3" BRASS CAP IN MONUMENT BOX OR STATE HWY DIV 1991, 632+26.19 PS
2002	69913.806	20953.362	FD 3" BRASS CAP IN MONUMENT BOX OR STATE HWY DIV 1991, 638+26.19 PSC
2003	69958.057	20872.170	FD 3" BRASS CAP IN MONUMENT BOX OR STATE HWY DIV 1991, 641+30.93 PCS

OREGON DEPARTMENT OF TRANSPORTATION

HORIZONATL CONTROL AND RECOVERY MAP
STANFIELD INTERCHANGE (PILOT TRUCK STOP)

HWY 395 UMATILLA - STANFIELD

UMATILLA COUNTY

FOR O.D.O.T. REGION 5 80788 KIK RD., HERMISTON, OR 97838

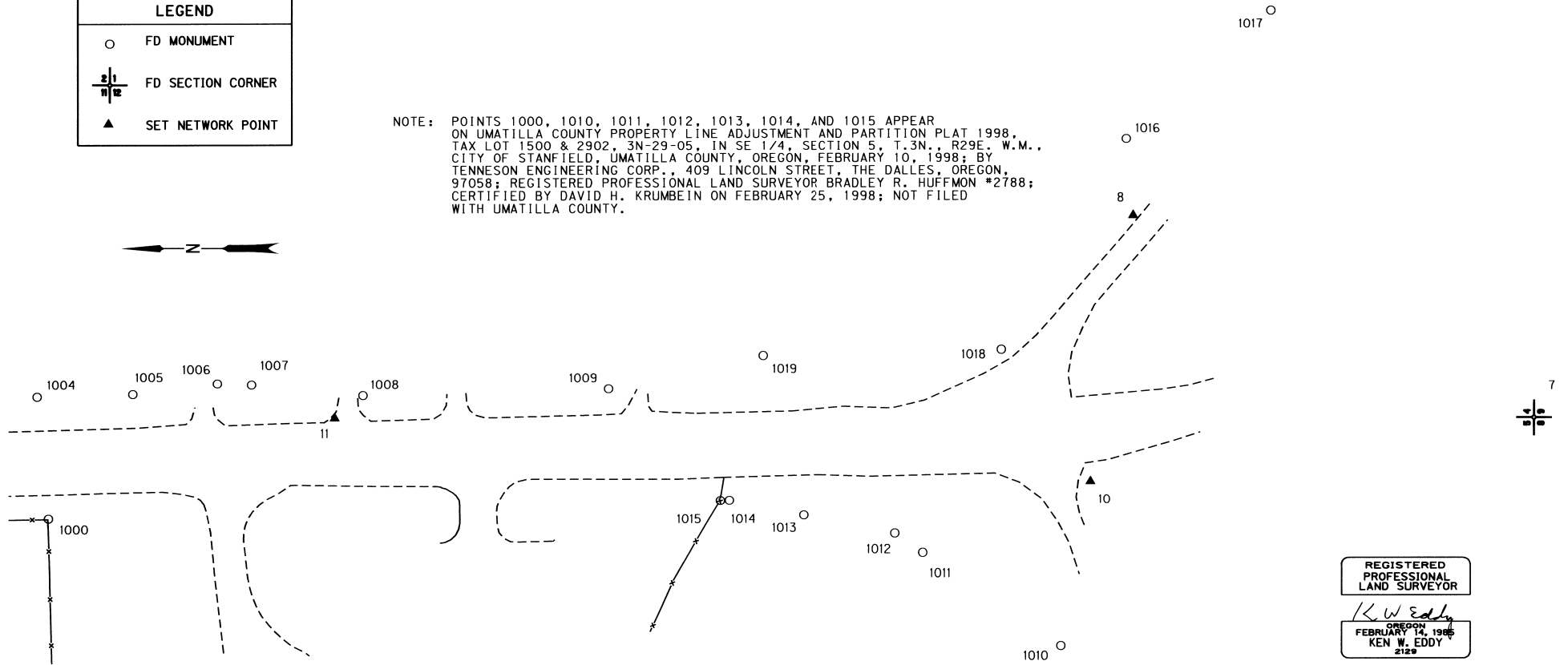
MARCH 26, 2002

SHEET 2 OF 3

E. 1/2 SEC. 4 & W. 1/2 SEC. 5 T.3 N. R.29 E. W.M.

LEGEND	
○	FD MONUMENT
⊕	FD SECTION CORNER
▲	SET NETWORK POINT

NOTE: POINTS 1000, 1010, 1011, 1012, 1013, 1014, AND 1015 APPEAR ON UMATILLA COUNTY PROPERTY LINE ADJUSTMENT AND PARTITION PLAT 1998, TAX LOT 1500 & 2902, 3N-29-05, IN SE 1/4, SECTION 5, T.3N., R.29E. W.M., CITY OF STANFIELD, UMATILLA COUNTY, OREGON, FEBRUARY 10, 1998; BY TENNESON ENGINEERING CORP., 409 LINCOLN STREET, THE DALLES, OREGON, 97058; REGISTERED PROFESSIONAL LAND SURVEYOR BRADLEY R. HUFFMON #2788; CERTIFIED BY DAVID H. KRUMBELT ON FEBRUARY 25, 1998; NOT FILED WITH UMATILLA COUNTY.



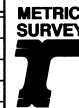
RECOVERED MONUMENT LIST

PT	EASTING	NORTHING	DESCRIPTION & REFERENCE DOCUMENTS
1000	69964.343	20533.870	FD 5/8" IRON REBAR W/YELLOW PLASTIC CAP #872, 96-29-B, 98-17-B, HUFFMAN SURVEY SEE NOTE
1004	70008.234	20537.962	FD 5/8" IRON REBAR W/PLASTIC CAP #951, 92-85-B
1005	70009.166	20503.587	FD 5/8" IRON REBAR W/PLASTIC CAP (NOT LEGIBLE), 92-85-B
1006	70012.990	20473.162	FD 5/8" IRON REBAR W/PLASTIC CAP (BENT), 92-85-B
1007	70012.574	20460.913	FD 5/8" IRON REBAR W/PLASTIC CAP #2316, 99-256-B, 92-85-B
1008	70008.624	20420.895	FD 5/8" IRON REBAR W/YELLOW PLASTIC CAP (NOT LEGIBLE), 99-256B
1009	70010.948	20332.706	FD 5/8" IRON REBAR W/YELLOW PLASTIC CAP MARKED STRATTON 1111, 99-256E
1010	69918.207	20169.739	FD ALUM CAP OSHD, 01-14-C, STATE R/W MAP 9B-29-7, HUFFMAN SURVEY SEE NOTE
1011	69951.920	20219.425	FD 5/8" IRON REBAR W/YELLOW PLASTIC CAP #2786, HUFFMAN SURVEY SEE NOTE
1012	69958.759	20229.475	FD 5/8" IRON REBAR W/YELLOW PLASTIC CAP #2786, 01-14-C, HUFFMAN SURVEY SEE NOTE
1013	69965.434	20262.487	FD 5/8" IRON REBAR W/YELLOW PLASTIC CAP #2786, 01-14-C, STATE R/W MAP 9B-29-7, HUFFMAN SURVEY SEE NOTE
1014	69970.881	20289.263	FD 5/8" IRON REBAR W/YELLOW PLASTIC CAP #872, 01-14-C, STATE R/W MAP 9B-29-7, HUFFMAN SURVEY SEE NOTE
1015	69970.794	20292.459	FD 5/8" IRON REBAR W/PLASTIC CAP #872, 01-14-C, STATE R/W MAP 9B-29-7, HUFFMAN SURVEY SEE NOTE
1016	70100.747	20146.307	FD 5/8" IRON REBAR W/YELLOW PLASTIC CAP MARKED STRATTON 1111, 99-256-B
1017	70146.655	20094.263	FD 5/8" IRON REBAR W/YELLOW PLASTIC CAP MARKED STRATTON 1111, 99-256-B, STATE R/W MAP 9B-29-7
1018	70025.165	20191.259	FD 5/8" IRON REBAR W/YELLOW PLASTIC CAP MARKED STRATTON 1111, 99-256-B, STATE R/W MAP 9B-29-7
1019	70023.021	20277.146	FD 5/8" IRON REBAR W/YELLOW PLASTIC CAP MARKED STRATTON 1111, 99-256-B

REGISTERED PROFESSIONAL LAND SURVEYOR
K. W. Eddy
 OREGON
 FEBRUARY 14, 1988
 KEN W. EDDY
 2129

EXPIRES 12/31/03

RECEIVED BY
 Umatilla County Surveyor
 Date 7-02
 Rec'd By KR
 No. 02-781-B



SCALE 1:1000



TO CONVERT METERS TO FEET DIVIDE BY 0.3048

OREGON DEPARTMENT OF TRANSPORTATION
 HORIZONATL CONTROL AND RECOVERY MAP
 STANFIELD INTERCHANGE (PILOT TRUCK STOP)
 HWY 395 UMATILLA - STANFIELD
 UMATILLA COUNTY