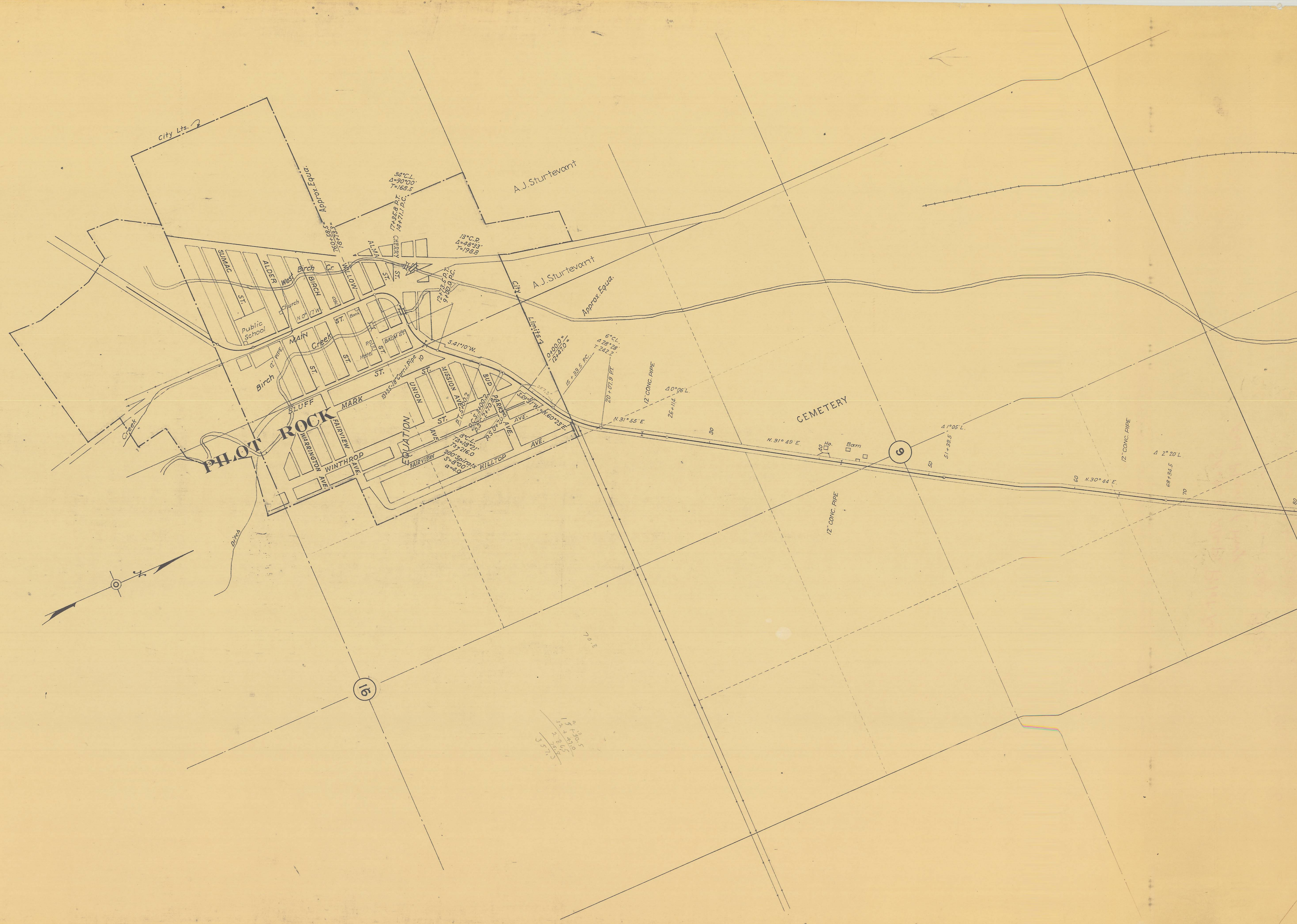


OREGON STATE HIGHWAY DEPARTMENT
 CONSTRUCTED LINE
PILOT ROCK TO PENDLETON
 PENDLETON - JOHN DAY HIGHWAY
 UMATILLA COUNTY

Scale 1 in = 400 ft. April 1926.
 July, 1941
 DRG. No. 3 B17-6



1000
 Fox 1584