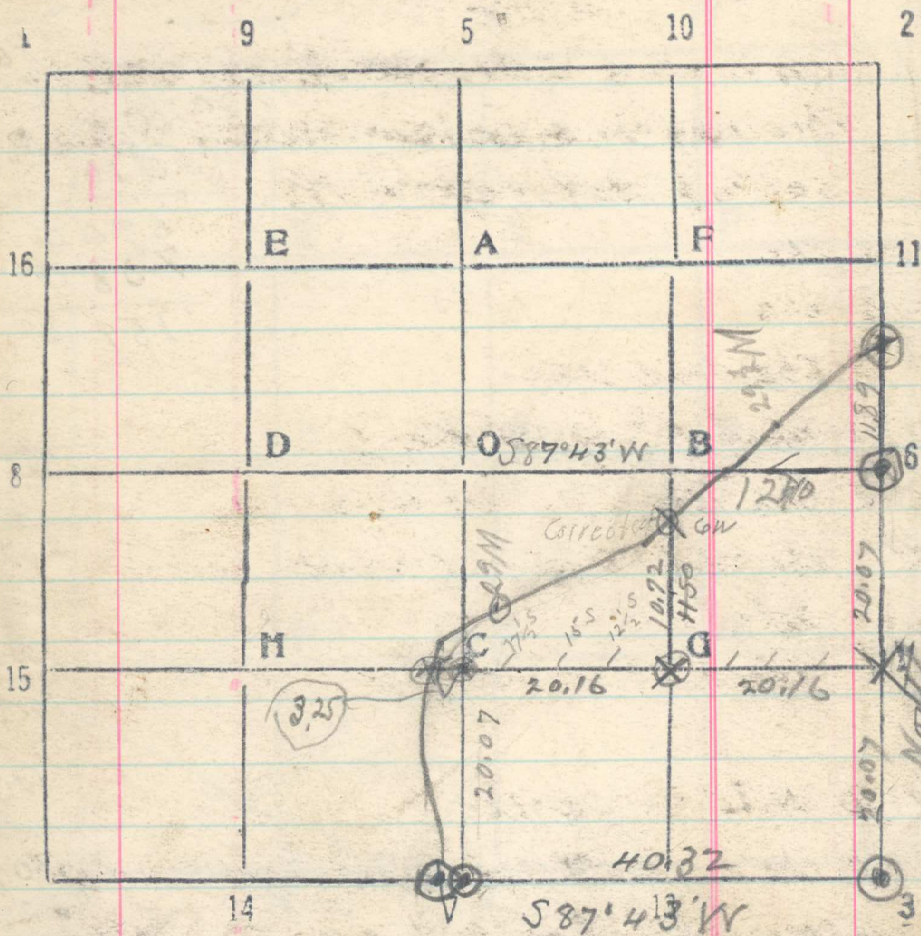


Sec. 8 T. 3N R. 36E



From 12-5-8 run $587^{\circ}43'W$.
 20.16 Set G-S. 8
 40.32 Set C-S. 8
 hence on same line
 Wild Horse Creek, + set ~~MC~~
 2.93 MC, on Right bank

Friday Sept 1919

390

Line 11-C

From 12-5-8 $587.43W$ through SE $\frac{1}{4}$ sec 8
 Through thick brush + scrubby yellow pine
 setting stakes every 5 chs

- 19.90 chs 11
- 20.16 chs
- 39.80 Chs Road N+S
- 40.32 Set G-S. 8
- 40.32 Mark 4th square stump
- 42.00 chs Wire fence N+S+W
- 43.00 chs Wild Horse cr sheds south
- 43.25 MC cor - Moved this MC, up lks E to
 right bank Wild Horse Creek
 North From G-S-8
- 11.50
- 10.72
- 10.50 Wild Horse cr
- 10.72
- 11.50 chs set MC ^{on right bank} ~~at wire fence~~ E+W
 June corner 31 lks E + run North

Monday Sept 29th 1919
 Line C-7 Sec 8 5-10-15
 20.29 chs cor 7 bears 4 lks W
 June From N-S run $587^{\circ}43'W$
 12.40 Right bank Wild Horse Creek Set MC