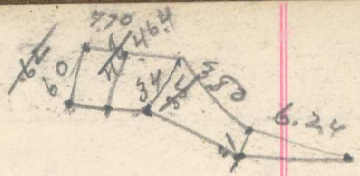
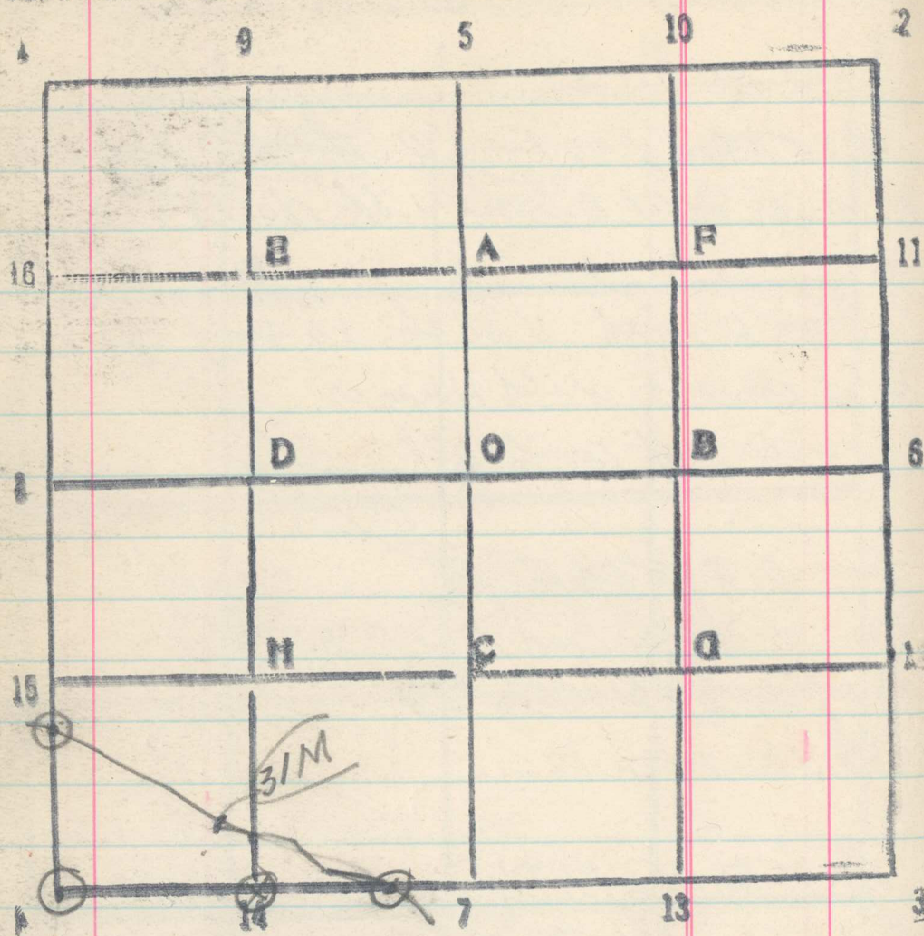


Sec. 10 T. 3. N. R. 36 E.



$33 \overline{) 3896}$   
 $464$   
 $48$   
 $17.70 / 60.00$   
 $5310$   
 $6900$   
 $7080$   
 $1590$

$6.24$   
 $1872$   
 $208$   
 $20.80$   
 $6.24$   
 $3.12$   
 $10.04$   
 $3.4$   
 $17.74$   
 $3.4$   
 $7096$   
 $5322$   
 $60.316$