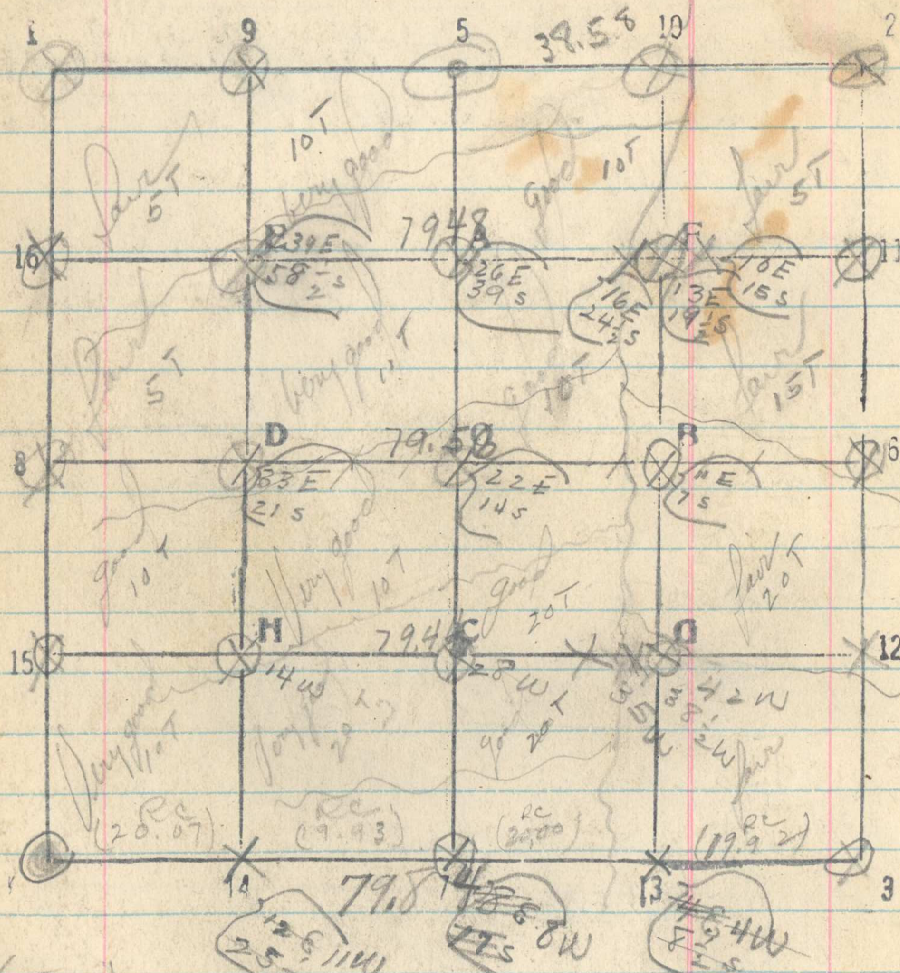


29  
 Sec. 11 T. 2N R. 35E



5/28 line 3-4 - Meet between 11 & 14  
 25 Squaw Creek Sheds North  
 79.84 Sec Cor 11-10-14-15 bears  
 South 34 lks.

505

5/23 line 11-16 West from North half  
 from S.S. on Sec. cor. 1-2-11-12  
 Set 15-20-25-40-60  
 25 Squaw Creek Sheds North  
 63 Ravine - brushy, wooded - Sheds N60E.  
 75 Top of ridge  
 79.48 1/16 cor. 16 bears S 78 lks.

5/26 line 6-8 West from center  
 Set 20-40-60

7 Ravine, no water, Sheds N65W.  
 22 Squaw Creek Sheds N.  
 67 Ravine Sheds N 70 E -  
 75 Ridge  
 79.56 1/4 cor bears S. 28 lks.

5/27 line 15-12 East from South half.  
 Set 20-40-50-55-60

22 Ravine - Sheds N. 60 E  
 53 Squaw Creek Sheds North  
 79.44 1/16 cor. 12 on line.