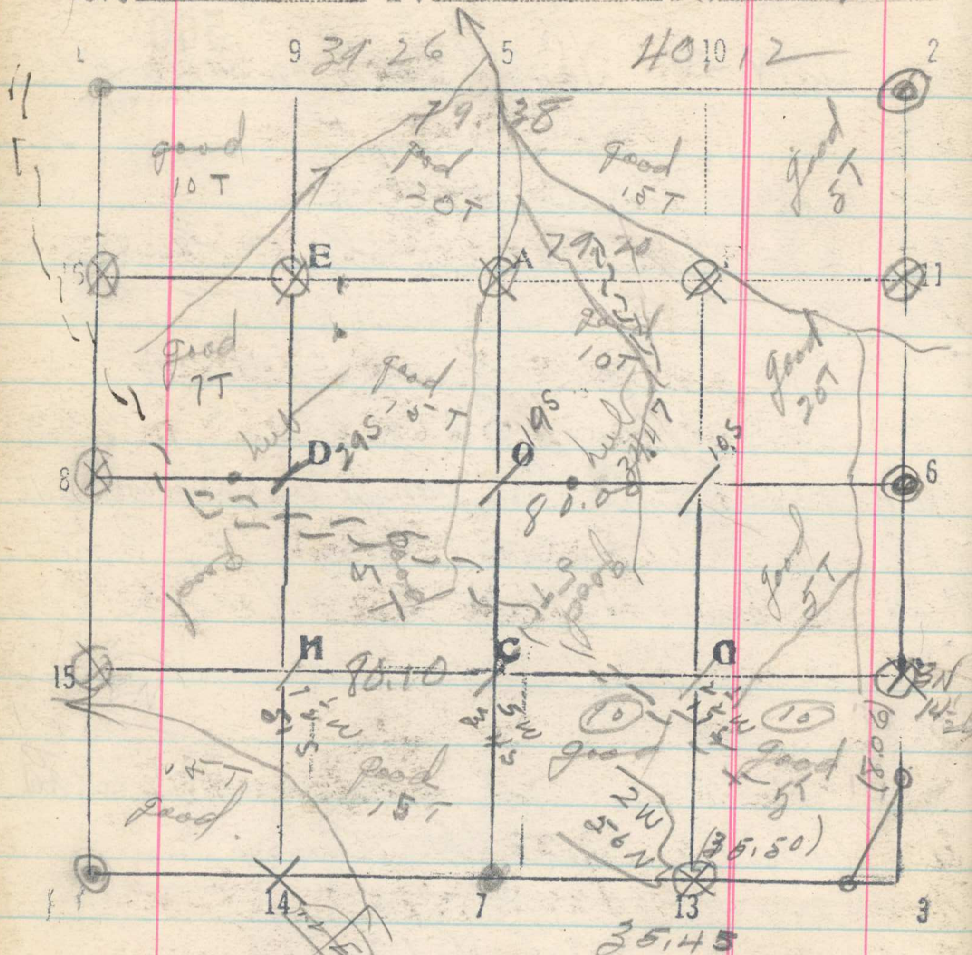


43
 Sec. 11 T. 1 N R. 35 E



40.24

80.19

11/18 line 12-15 west thru South half
 1st 20-40-60
 2nd 1/6 cor 15 bears S. 68 lks

561

1/2 line 4-7 East between 11 & 14
 1st 20 / 27 Range 35 E N 30 W.
 40.24 1/4 cor of 11 & 14 on line
 11/17 line 7-3 East between 11 & 14 from 1/4 cor.
 1st 20.
 35.45 C.C. for 11 & 14 bears N 100 lks.
 10/17 line 2-6 North between 11 & 12 from C.C.
 1st 8.06 /
 28.17 1/4 cor bears E 50 lks.
 11/18 line 2-6 South between 11 & 12
 1st 20.03
 40.06 1/4 cor on line.
 11/17 line 16-11 East thru North half
 1st 20 - 40 - 60
 Range 15-NE / 39.50 N / 63 - N 60 W
 79.20 1/6 cor 11 bears S. 58 lks
 11-18 line 6-8 West thru Center
 1st 20 - 40 - 60
 80.00 1/4 cor 8 bears S. 38 lks