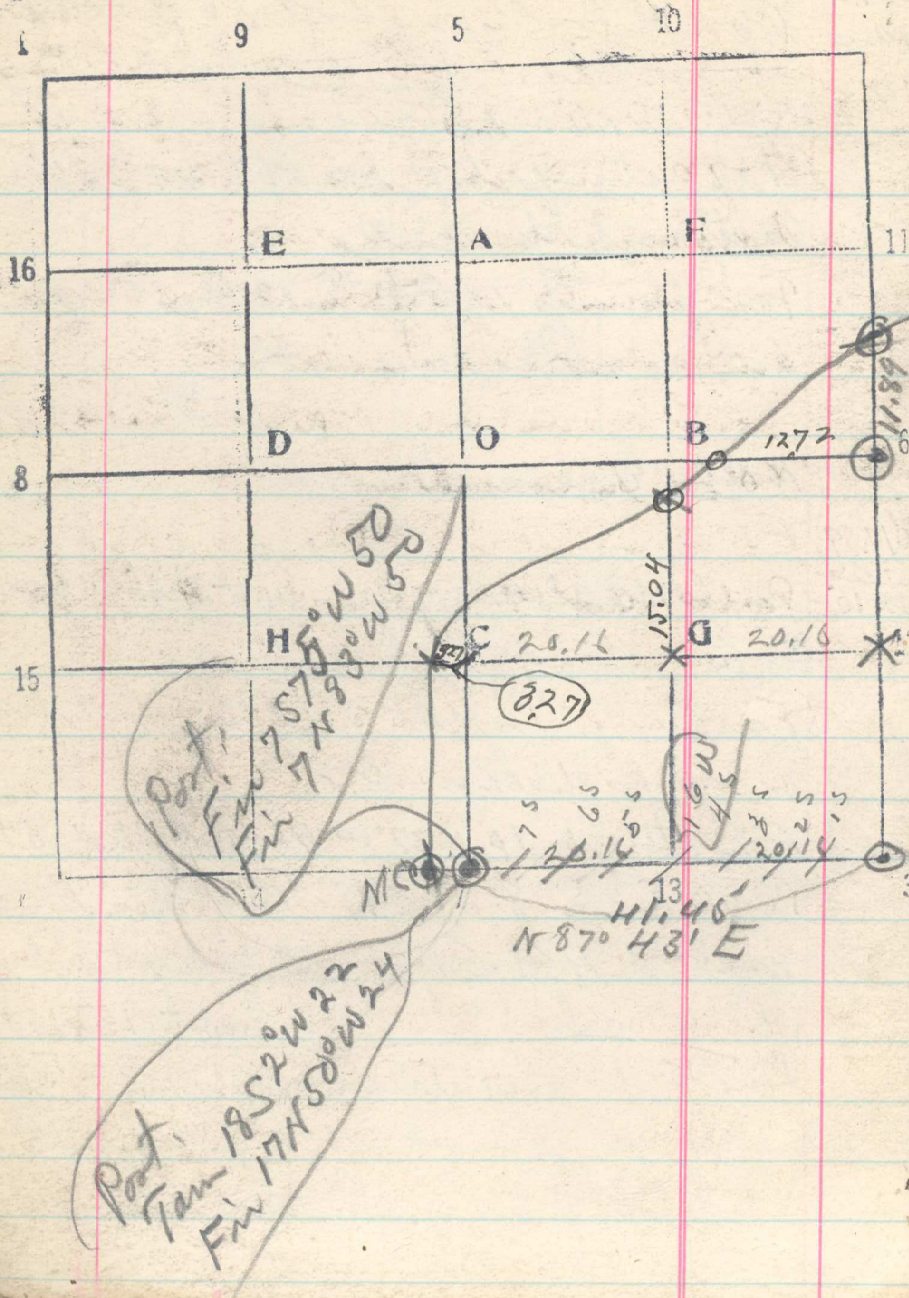


43
 Ser. 8 T. 3 N R. 36 E



278

9/18 line 3-7 West from her cor.
 8-9-16-17 between her 8+17
 5-10-15-20-25-30-35
 40.32 old 1/4 cor. bears S. 8 lks.
 Corner apparently reestablished, when
 section was subdivided, from Piney trees.
 Backsight on sec. cor. + project line
 S 87° 43' W. from 1/4 corner.
 1.36 Old M.C. bears N. 4 lks.
 (Reestablished M.C. from B.T. stump.)