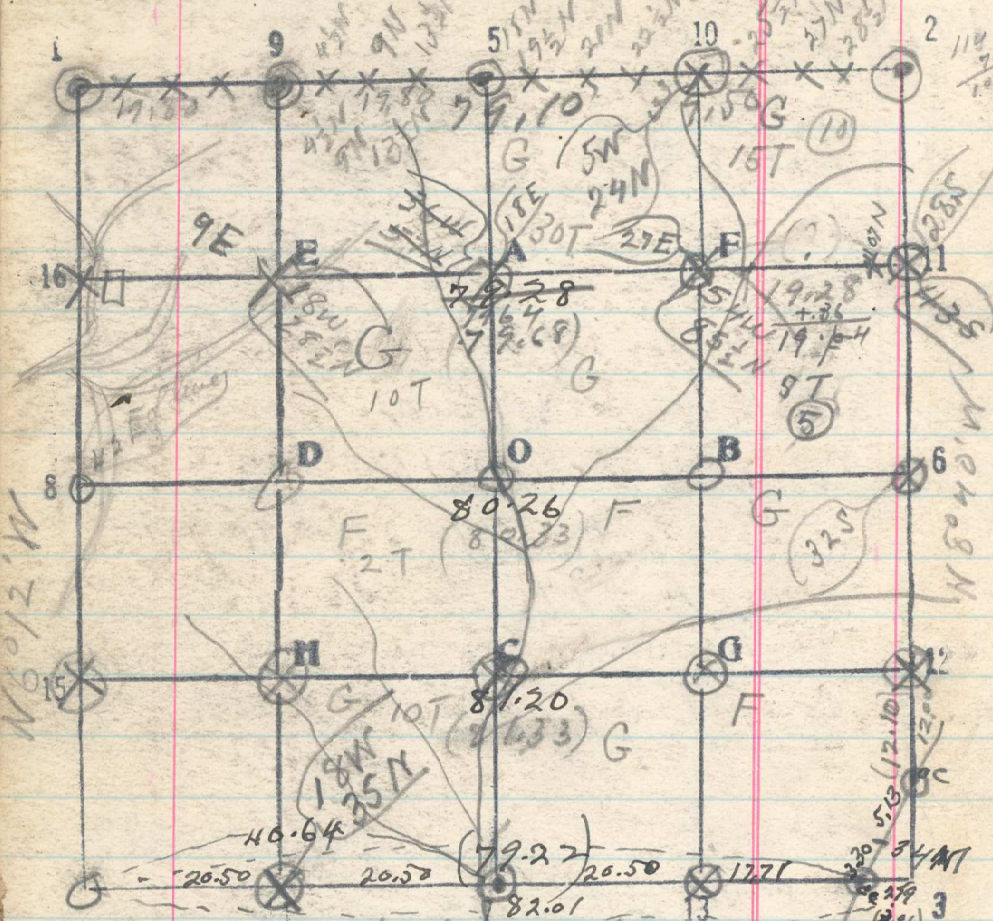


8
Sec. 16 T. 3N R. 36E



S 88° 34' E 116
19.80 1/16 cor bears S. 3 lks.
Appt decayed post marked 1/16.
Fm 8 N 46° E 21 marked 1/16 S BT
Fm 6 S 40° E 23 marked 1/16 S BT
This cor. was evidently established by a local
survey between 6 and 10 years ago. June 26/1919

Aug. 5. Farm 1/16 cor, S 88° 34' E. by B.S. on
Dec. cor
5.20 Road, N + S
19.80 Point for 1/4 cor bears N. 18 lks.
I locate this cor from old B.T.
in Dec 16, a fir 12 m, 1
bears S. 5° E 6 lks. mks 745. 1911.
This tree is recorded in old notes as
Tan. 4, N. 5° E 6 lks. evidently
error in field notes. Distance
of other B.T. Tan. 3 S 85° W 19.
Continue same line S 88° 34' E
18.00 Set of Canyon
19.80 Set 1/16 cor, 10 S. 5. 16.
25.50 Pt. for cor of 9, 10, 15 & bears N. 30
lks. Located from old B.T. B.S.
Dec. 9 + 15, 1
Pine 26 N 53° W 48 mks
Pine 20 S 53° E, 107 mks

243

Aug 5, 1919

19.28
54
19.82
19.82