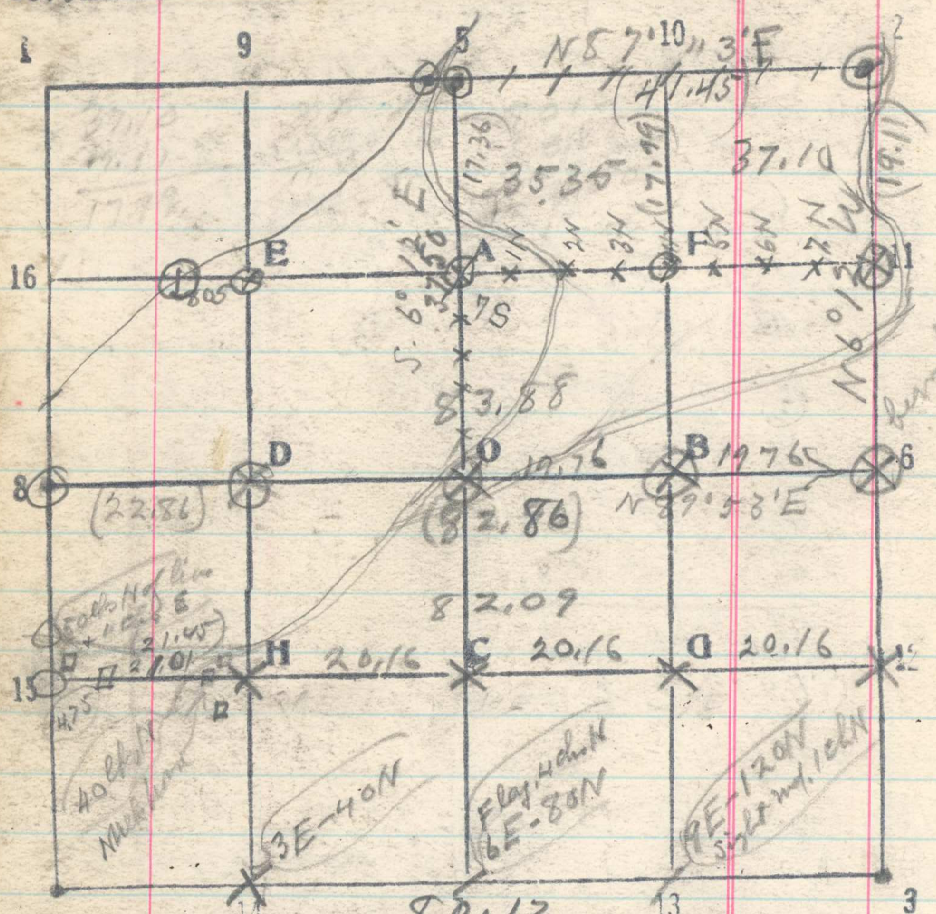


7  
 Sec. 17 T. 3 N R. 30 E



Dist. B. bunch marks about 6 years ago  
 Fir stump 18 S 37 1/2° E 60 lbs, greatly decayed marks oblit.  
 Fir stump 15 N 62° E 7 lbs mark  
 B.I. Dcut into this stump about 6 in to move the mark. (Recorded as 4 in)  
 June 26, 1919

~~S 88° 34' E bet 9+16  
 19.80 1/16 cov bears S. 3 lbs. A 243  
 miled 1/16 Flw 8 N 46° E 21 miled 1/16 SBT  
 Fin 6 S 40° E 23 miled 1/16 SBT  
 June 24/1919~~

From 1/4 cov bet 8+17 run S. 6° 44' E  
 17.36  
 20  
 37.50  
 (37.36)  
 Set 1/16 cov A-S. 17,  
 Cov O bears W. 12 lbs.  
 W.R.M. Sept. 19, 1919

Line A-11  
 20 Set F-S. 17  
 40.38 Cov. 11-S. 17 bears N 8 lbs.  
 Sept. 22, 1919

From A-S. 17 run West by B.S. 11  
 20.19 Set cov E-S. 17  
 8.05 Set temp M.C. on Res bed, Sept. 23, 1919

9.00 Set temp W.  
 9.07  
 70