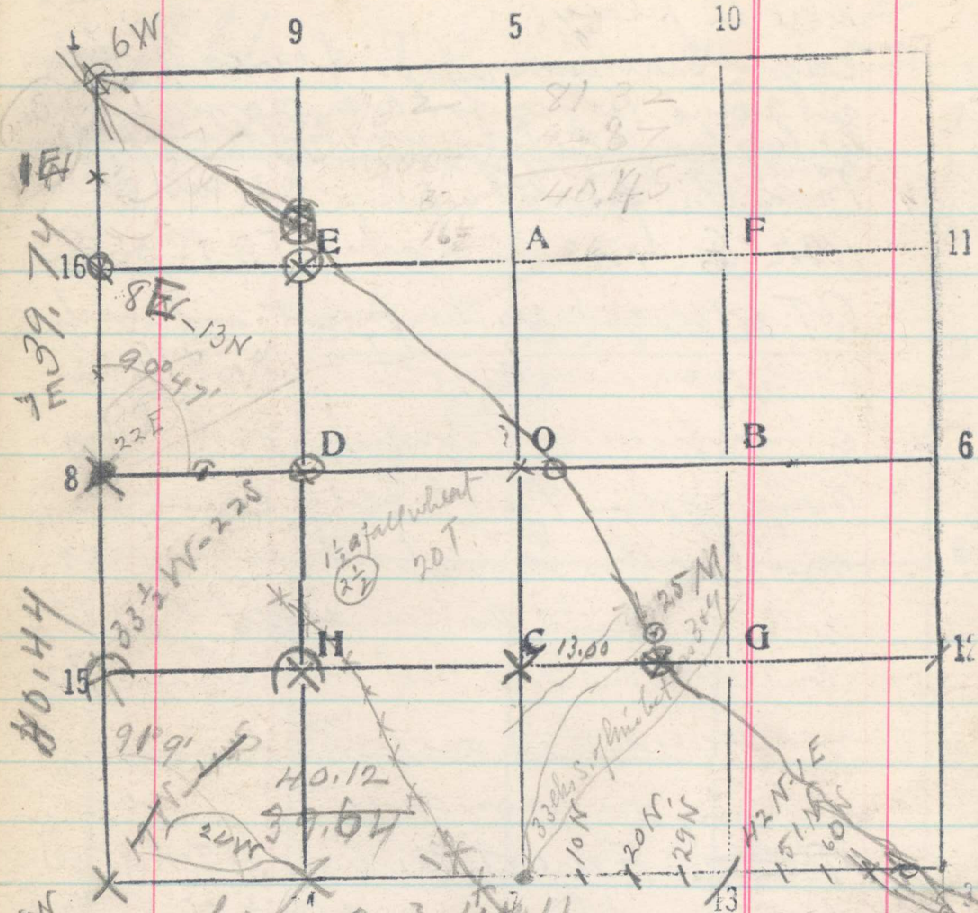


33
 Sec. 11 T. 3 R. 35 9047



20 of Secs 2, 3, 10 & 11
 Set 15-S. 11 about 2 1/2 chs of
 fence cor., N + W.
 40. Set temp cor of sec. 10, 11, 14 + 15
 Continue South bet sec. 14 + 15
 Set 1/4 cor.
 40. Fence, E + W
 41.73 Cor of sec. 14, 15, 22 + 23 bears W, 59 lks

From cor of 10, 11, 14 + 15 run
 East bet 11 + 14 by B.S. 90° from
 line H-8 of sec. 11 315

20.08 Old ~~furrow~~ back furrow where there
 was evidently a fence at one time
 39.64 1/4 cor. bet sec. 11 + 14 bears S,
 +48
 40.12 80 lks. dist. Jan 14, 1920.

France East by B.S. on cor of sec.
 3, 4, 9 + 10.

20 Set cor 18-S. 11.
 40.02 Cor of sec. 1, 2, 11 + 12 bears N. 78 lks.
 Jan 21, 1920 66

From 15-S. 11 run East toward a point
 20.22 chs. N. of cor of sec. 11, 12, 13 + 14

20.06 Set H-S. 11 in stubble
 24.25 Fence cult. gr. SW + SE
 40.12 Set C-S. 11
 52.25 Road, N 25° W.
 53.12 Left bank Wild Horse creek N 25° W Set MC.

From 1/4 cor bet. sec. 10 + 11 run East, by B.S. 90° to
 left on cor of sec. 2, 3, 10 + 11
 9.91 ~~Point~~ Point for 1/32 cor. bears N. 5 lks. dist. located
 by old 10 to Pine 20. East 27 mls of 1/32 BT
 Pine 14 S 80° W, 9 lks. ~~1/32 BT~~ (old survey)
 N 85° W 9 lks. (See 5th Page on)