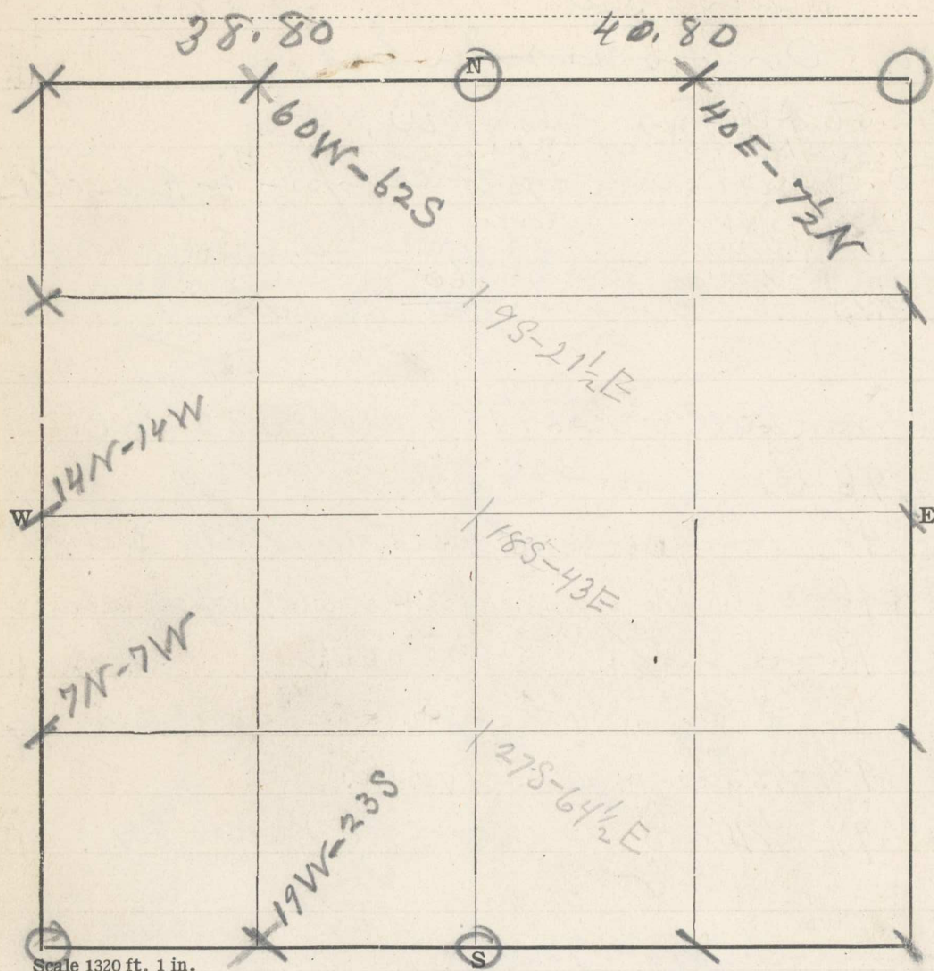


32 Sec. 16 T. 2N R. 35E

Examiner \_\_\_\_\_ Date \_\_\_\_\_ 19\_\_



E bet secs 8 & 17

369

- 20.00 Set term 1/16 cor point
- 40.00 Couldnt find 1/4 sec cor and set stake for term 1/16 sec. cor.
- 60.00 Set term 1/16 cor
- 80.02 Cor to secs. 8, 9, 16 & 17 bears S. 49 lks

- From cor to secs. 8, 9, 16 & 17 run E bet 9 & 16
- 20.00 Set term 1/16 cor in thicket S. E. of E. fir <sup>tree</sup>
  - 38.80 1/4 sec cor bears S. 124 lks dist
  - 20.00 Set term 1/16 cor
  - 40.87 Cor to secs. 9, 10, 15 & 16 bears N. 15 lks
  - 84.45 Our old term cor set on random line from North bears N 78 lks dist. (or 496 lks. E. and 63 lks. N)

- From 1/4 cor bet secs 9 & 16 Run South
- 20.00 Set term 1/16 cor A
  - 40.00 Set term 1/16 cor
  - 60.00 Set term 1/16 cor C
  - 80.36 1/4 sec cor bears E. 86 lks