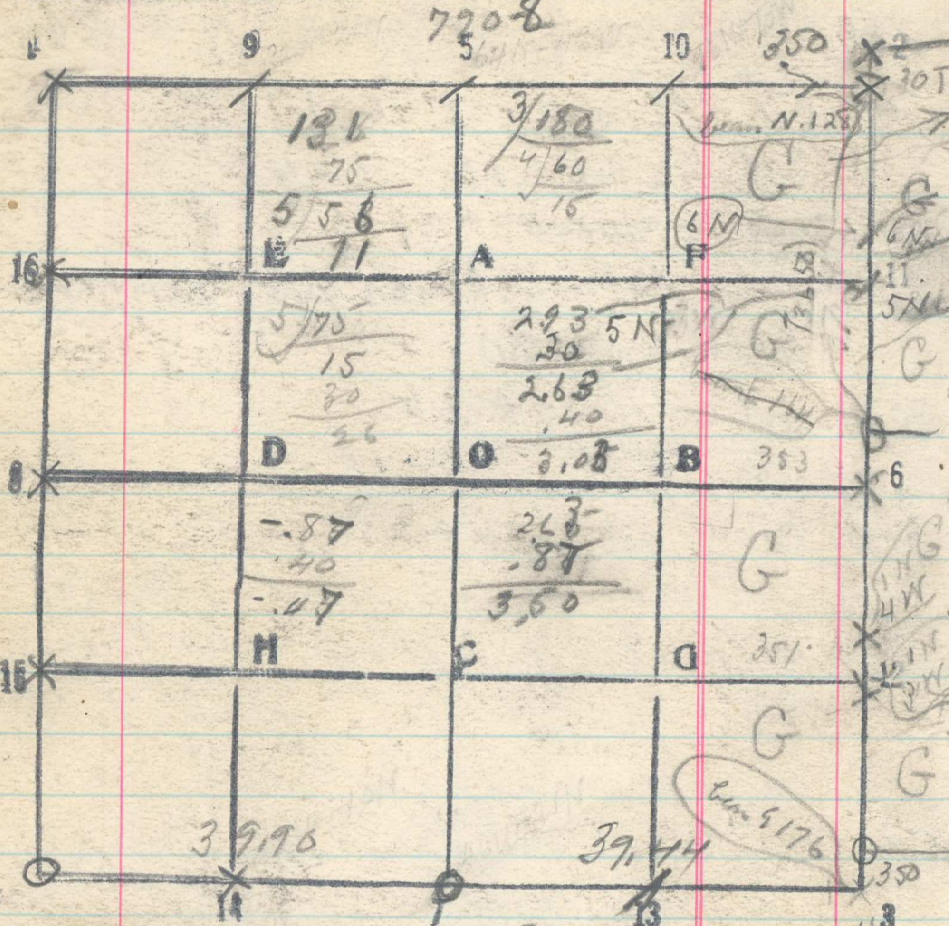


14 Sec. 26 T. 2 N R. 35 E



From corner 30 to 1/4 corner North

- 1650 Set 1/16 cor 12-S. 25
- 20. Set 1/16 cor 15-S. 30
- 36.50 Set 1/4 cor for acc. 25
- 40.00 1/4 cor for acc. 30 bears W
- 8 lbs stone marked 1/4 in MS

Thence N 0° 10' W by a line

- 1650 Set 1/16 cor 11-S. 25 249
- 20 Set 1/16 cor 16-S. 30

23.50 Base West 10 ch
Angle N 23° 24' E to flag

Dist cut $23^{\circ} 24' = 2.314 \times 10.5$
 $24.1 + 23.50 = 47.65$ to flag

Incl N 14° 45' Dist 14.41
 $14.41 + 23.50 = 37.91 - 41 = 37.50$

36.50 Set
37.50 C.C. of acc. 24 + 25 bears W. 6 lbs

40.10 Cor of acc. 19 + 30 as next line
by line July 9 13 18

79.02 East bet 24 + 25
Cor of 24 + 25 bears N. 42 lbs 19

July 9

East bet 25 + 26 from 1/4 cor

39.44 C.C. of 25 + 26 bears N. 16 lbs 25 27W 30W 12W 15W

