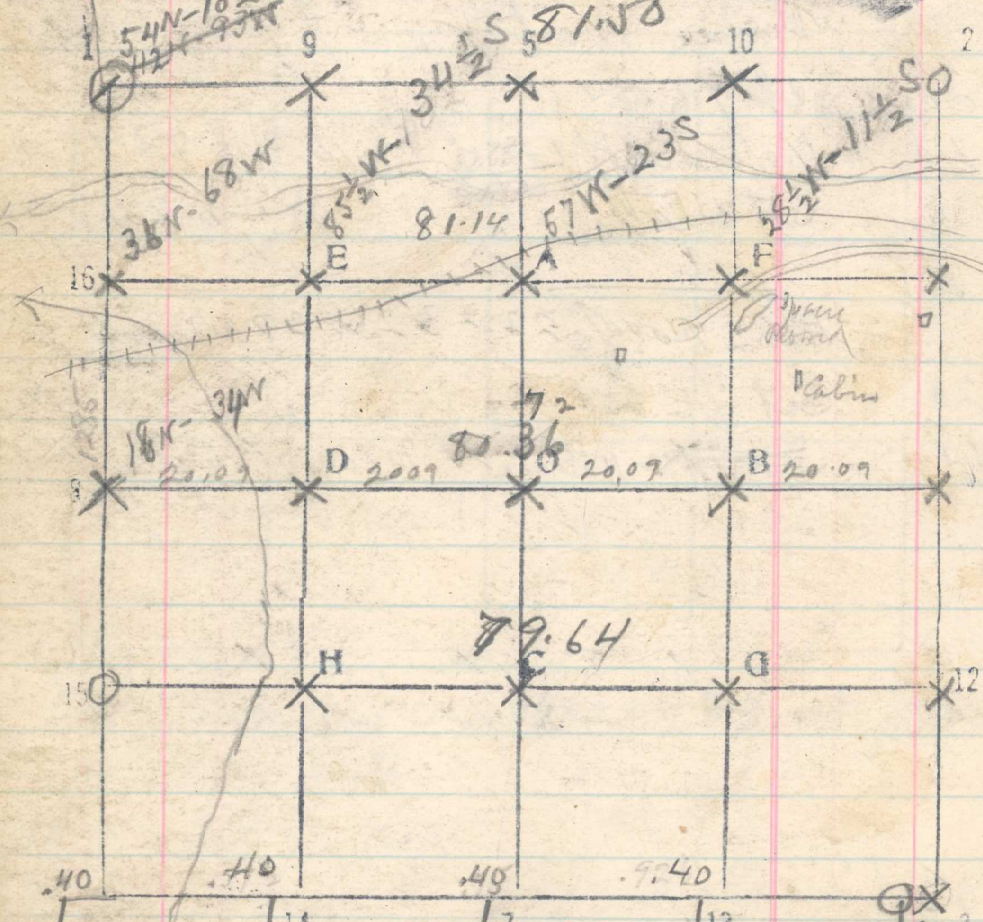


10.18 cov. beam W. 216 lbs
 3N-2W 186W
 78W-155W 4S-5W Sec 25
 55W-124W 9N-7 1/2 W
 54W-102W
 2/96 14
 216/31 6



From 11-S-36 run West
 20 Set 1/16 cor

40 Set 1/16 cor 82
 54 R.R. 36
 60 Set 1/16 cor 46 164
 80.46 1/4 emp 1/6 cor at 16-S-36 beam
 68 S. 82 lbs June 25/1918
 81.14 1/16 cor at 16-S-36 beam 8.46 lbs

From 1/16 cor at 15-S-36 a stone
 marked 1/6 in red stone, run
 north

20 No trace of 1/4 cor. Set stake
 40 Set 1/16 cor
 60.54 No trace. Set stake of Cor of 25, 26, 35
 beam west 102 lbs. a stone
 +36. Set stake marked with 1111 on N & 1 on S
 Continue north bet 25 & 26

20 Set 1/16 cor
 40 No trace of 1/4 cor. Set stake.
 60 Set stake. July 11, 1918
 80.96 Cor of 23, 24, 25 and 26 beam
 W. 216 lbs. a stone properly
 marked.

From 15-S-36 run East

20 Set 1/16 cor
 40 Set 1/16 cor
 60 Set 1/16 cor 79.64 12-S-36 beam N. 44 lbs