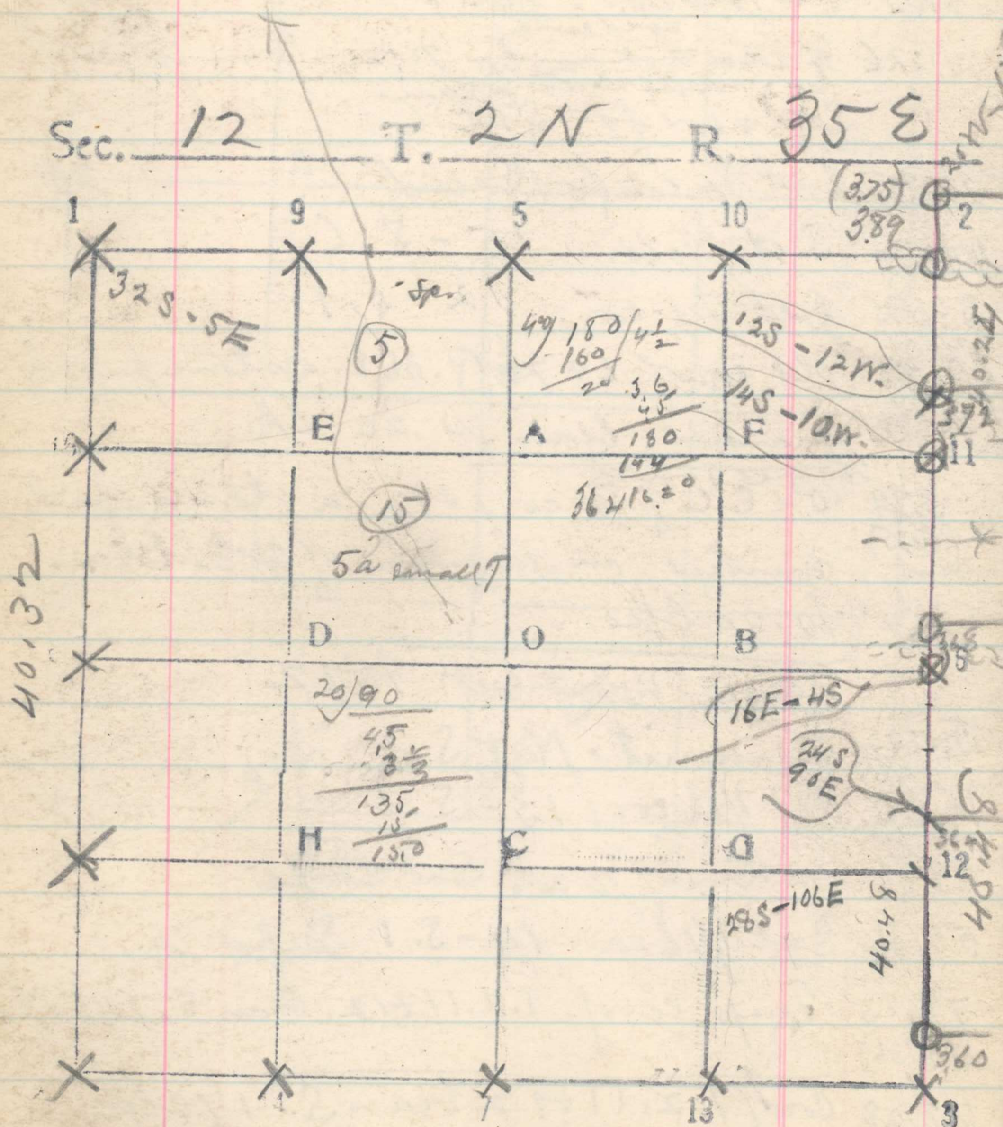


Sec. 12 T. 2 N R. 35 E



- From cor of 1+18 run South
- 3.75 cc of sec 1012
 - 20. Set 1/16 cor 16-S. 7.
 - 23.72 Set 1/16 cor 11-S. 12
 - 40.24 1/4 cor former 7 bears E. 50 lks
- Thence South
- 3.68 Set 1/4 cor for S. 12
 - 5. Base W 50 ch.
 - Angle N 15° 50' W. Dist 37.76 x 5 = 188.8
 - 23.88 to Flag
 - 23.64 Set 1/16 cor for Sec 7. (15-S. 7)
 - ~~40.00 No trace of cor of 7+18, set stakes~~
 - ~~43.60 No trace of cor of 12+13 set stakes~~
 - ~~Base W, 500 ch~~
 - 40.48 Cor of secs. 7+18 bears E. 180 lks
 - Line completed July 2, 1897

172