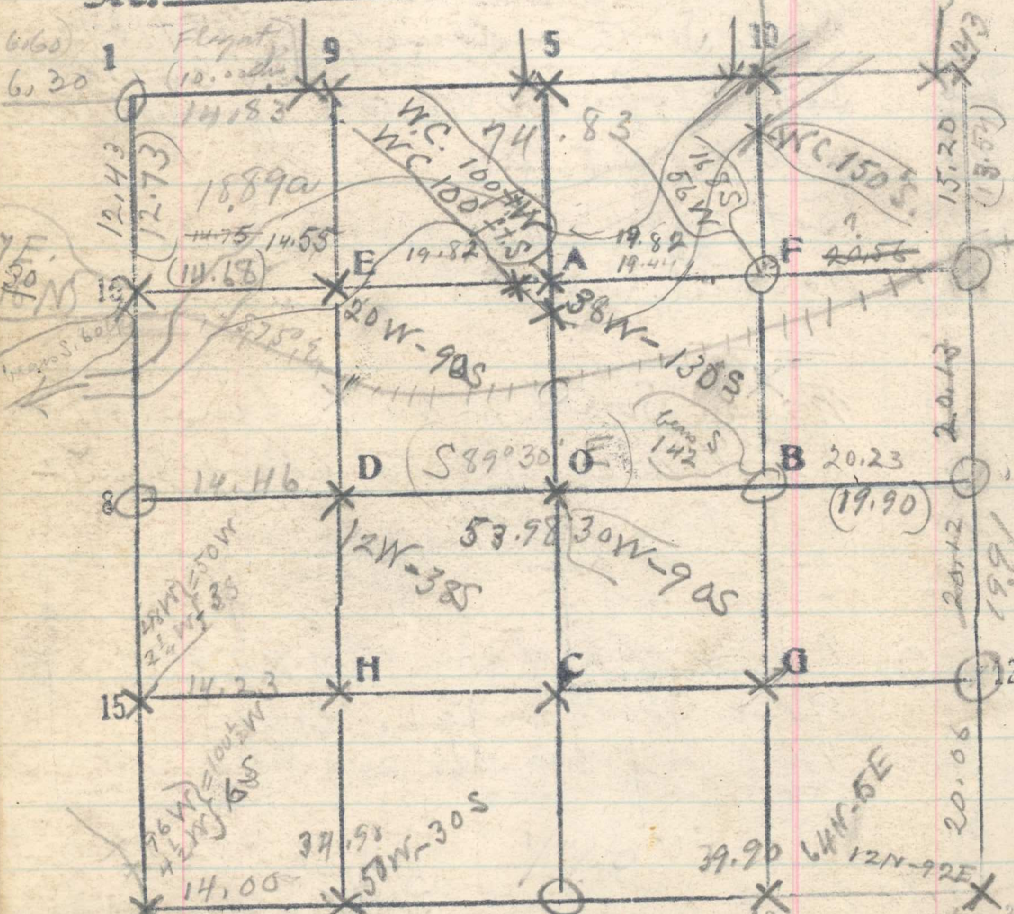


13.54
 589-45-108-52
 37-30W 395 39
 60S 44S 22S
 48S 108S
 60S 92S 130S-168S
 38-19-72
 14.75
 5419
 5468
 149
 18
 19

Sec. 6 T. 2N R. 35E
 WC 300W WC 100W WC 150S WC 120W N.



From 16-S. 6. Put out by city for 1/4 cor in 133 lbs
 South + 58 lbs West
 and Put marked RR Property Lines
 126 lbs W. and 41 lbs S.

57.08
 12.58
 (12.78)
 13.47
 32.73
 32.35
 158
 S. bet new 1/4 cor from CC of 1/4 cor
 Set 1/4 cor
 Old W. P. N. R., nearly E. W.
 575° E. + about N 60° W
 26.85
 12.73
 13.62

Point for 1/4 cor, bear East 17 lbs
 Determined by old bearing trees
 Cotton 24 N 35° W (N 45° E) 48 ma
 " 30 N 80° W 34 lbs marked 1/4 S.
 Dant into this tree about 7 inches to uncover
 the marks.

Thence South
 20 Set 1/4 cor
 40 Not a trace of cor of 1, 6, 7 + 12. Set stake
 Thence continue South on same line
 20 Set 1/4 in patch of brush
 40 Set stake No trace of 1/4 cor
 60 Set stake
 80 Set stake No trace of rec. cor of new

20.56
 1.68
 19.88
 117.80
 32.35
 15.45
 7.12.73 + 18

From pt.
 20 Set 1/4 cor
 20.56 1/4 cor. Put 2 B.T.s. in old site, bear S. 168 lbs
 40 On bar in river. Set 1/4 cor
 60 Set 1/4 cor
 70.75 16-S. 6 bear S. 60 lbs