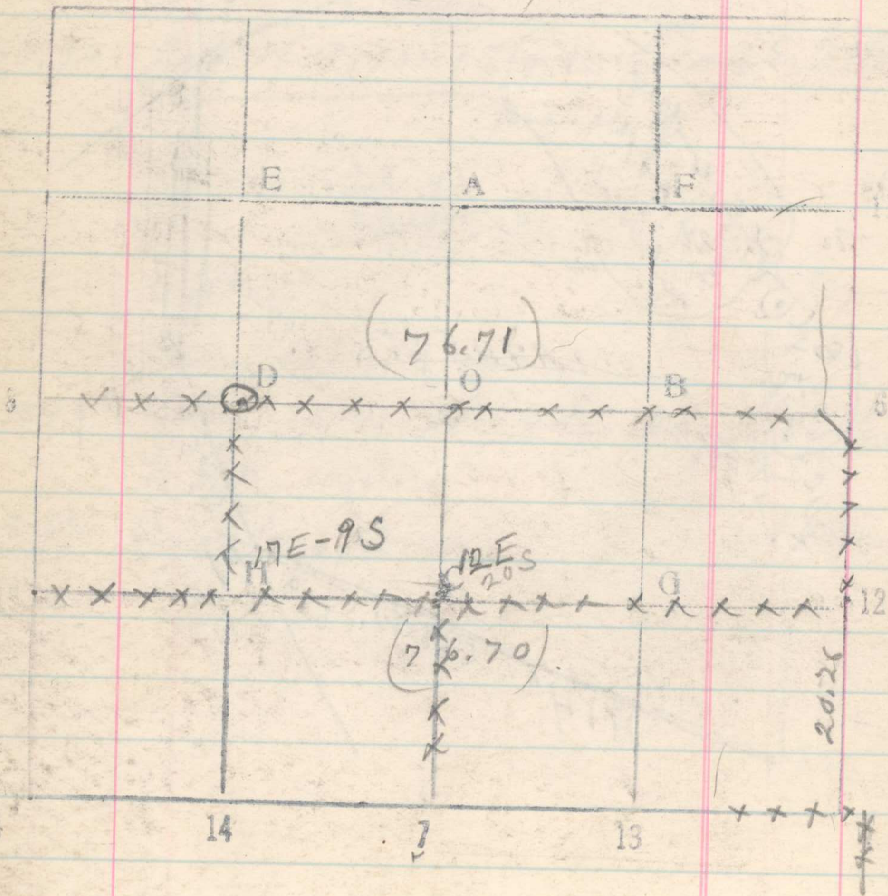


375

40.56
35.98
76.54

Sec. 18 T. 2 N R. 33
(76.75)



Feb 25, From $\frac{1}{4}$ cor bet 8+9 near South
40.12 cor of 8, 9, 16+17, a stone about 10 x 4 x 3 with
5 notches on S, 4 notches on E, at N end of 127
and on line with fence.

Thence west
80.56 A stone 14 x 7 x 5 not marked, set in ground in road,
center of lane running W + about center lane running N
but about 15 lbs S of center of lane running S. cor 7+8, 11+12

~~40.34~~
40.56 Thence west fence N+S
in center of lane, E+W, 60 lb. wide, and on line
with fences running N+S, (66 E)

Thence 35.98
.57
12.75 Prairie N.
35.98 CC of secs 7+18 on W bdy, which is 76.55
76.55 10 lb. N. of fence on S side of lane to East
(76.75)

19.97 From stone in road at cor of 7, 8, 17+18 run South
On line with fence running East.

20.00 On line with fence to West, (Road turns E.)
on line with fence to N+S, also.
40.20 Set stone for $\frac{1}{4}$ cor.

60.30 Intersect $\frac{1}{16}$ cor. a md stone with pole set
in it, on line with fence to west.

Thence west
20 Notice of $\frac{1}{16}$ cor. Fence on line.

39.97 Fence corner, N+S, E+W, bear S, 20 lbs
40.00 dist. New fence to E, W, + S, old fence to N.

60. Set (17 E) 8 lbs N of fence, 50 W,

76.02 Intersect WC. to $\frac{1}{16}$ cor. (45 lbs S of true c. pt)

76.47 Intersect point for $\frac{1}{16}$ cor.
(76.70)

(23)