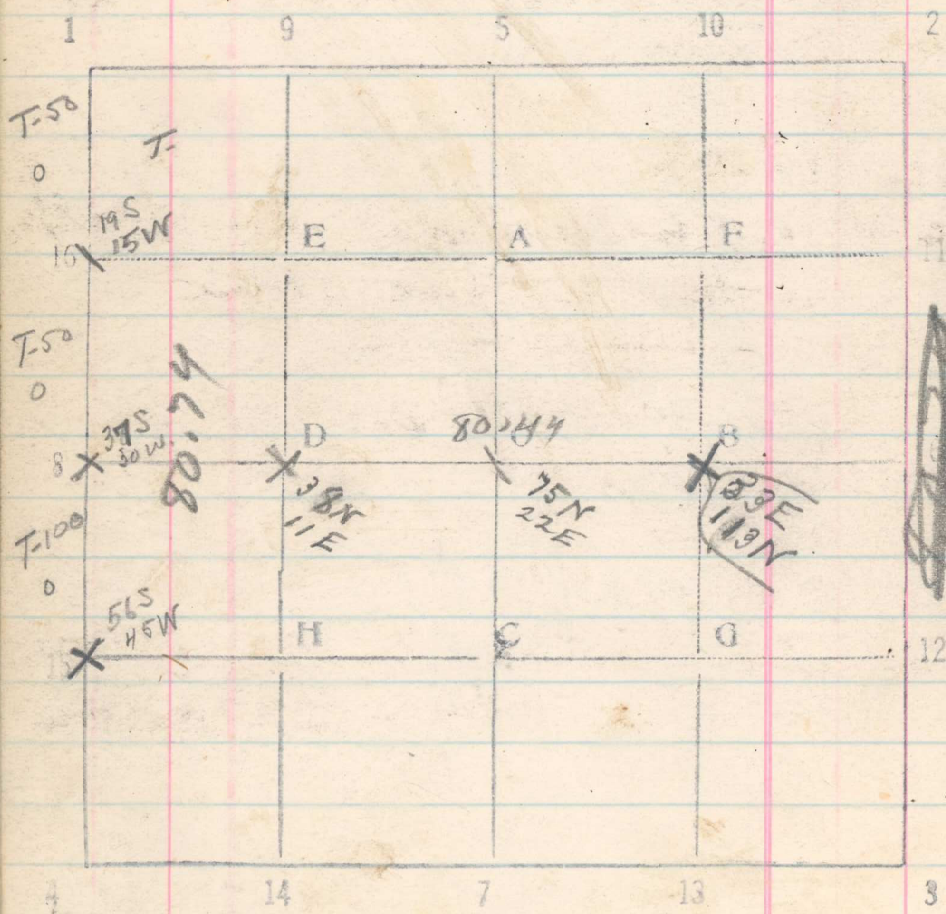


Sec. 11 TIN R34E



$\frac{3/113}{38}$   
75

65

Nov. 12 From cor of Secs. 2, 3, 10 & 11 run South bet, sec. 10 & 11

20 Set stake  
1/4 cor bet Secs. 10 & 11 bears 1 ch.

40. ~~No trace~~  
Thence East through sec. 11,

60. Set stake  
80.74 Cor of sec. 10, 11, 14 & 15 bears W 60 lks.  
A stone + iron post with CMS

10 & 11  
From 1/4 cor bet Secs 7 & 3 run East

20 Set 1/16 cor

40 Set 1/4 cor

60 Set 1/16 cor

80.44 1/4 cor bet Secs 11 & 12 bears N. 150 ch.  
Nov. 12, 1917, 2 1/2 miles