

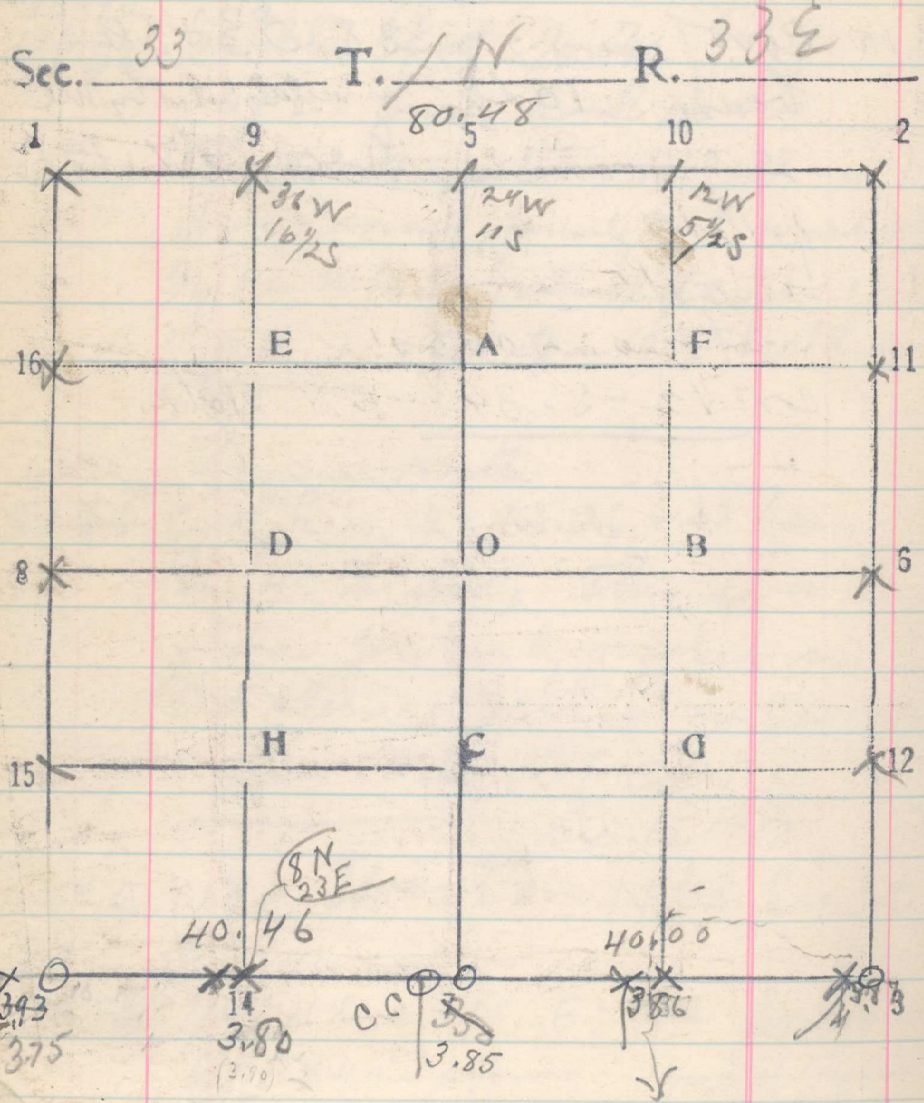
$$\begin{array}{r} 36.61 \\ 3.93 \\ \hline 40.54 \end{array}$$

$$\begin{array}{r} 3.62 \\ .23 \\ \hline 5 \end{array}$$

$$\begin{array}{r} 40.47 \\ 36.56 \\ \hline 3.91 \end{array}$$

$$\begin{array}{r} 40.47 \\ 36.56 \\ \hline 3.91 \end{array}$$

$$\begin{array}{r} 3.75 \\ 10 \\ \hline 3.85 \end{array}$$



Dec. 7 From Cor of Secs 32 + 33 run East 82.33 on S by Sec 33. by B.S. on T.P. on 2nd West.

16.37 1/2 Set 1/16 cor for Sec. 5
 20. Set 1/16 cor for Sec. 33.
 36.61 CC of sec. 4 + 5 bears N. 14 lbs. This is a stone
~~40.47~~ well set, marked CC with 6 notches on S.
 I mark 4 notches on E + 2 notches on W.
 40.46 Std 1/4 cor for Sec 33 bears N. 16 lbs.
 A stone marked 1/4 on N face with remains
 of pits E + W. Rain M.S. No frost
 re-dig pits E + W. 5 1/2 ft dist + cover
 M.S. with earth.

Thence East by B.S. on line to west
 16. Set 1/16 cor for Sec. 4
 20. Set 1/16 cor for Sec 33
 36.00 Set 1/4 cor for Sec. 4
 40. Intersect Cor of sec. 33 + 34, a stone
firmly set, marked 3 notches on E + W, +
remains of pits E, W + N. I re-dig pits.