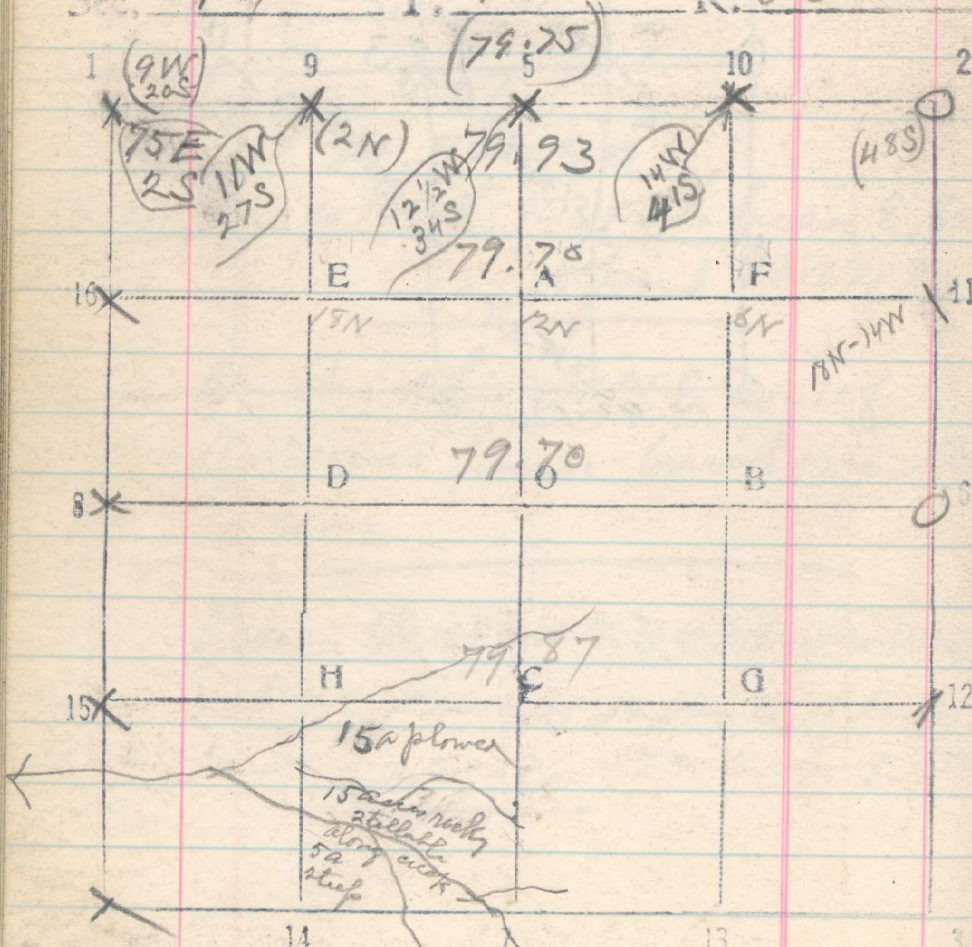


Sec. 14 T. 1 N R. 33 E



a little cherty clay + small breaks
4 creek dry up almost April 1.
Probably will be 20 or 30 ft

12-27-17 From fence cor, about NW cor of Sec 14 run East, by B.S. on 9, 10, 15 + 16

- 20. Set stake (2N) no trace
- 39.52 Fence cor W + S, bears S. 10 lks.
- 40 Set stake
- 60 Set stake
- (79.75) 79.84 Cor of 11, 12, 13 + 14 bears S. 48 lks.
- A stone ~~with~~ no marks discernable, with remain of Pits, mark stone 4 notches on S + 1 on E.

Thence South

- 70 Set 1/16 cor.
- 39.64 1/4 cor bears west 28 lks.
- A stone whd 1/4 on W face, firmly set, no indications of M.S. Drain M.S. W. of cor.

Thence S.

- 20, Set 1/16 cor. Rain - go to camp, 12-27-17
- 40, 28 Cor of 13, 14, 23 + 24 bears the