

This map was prepared for assessment purposes

SE1/4 NW1/4 SEC 3 T1N R32E WM
UMATILLA COUNTY
SCALE 1"=100'

10/26/06

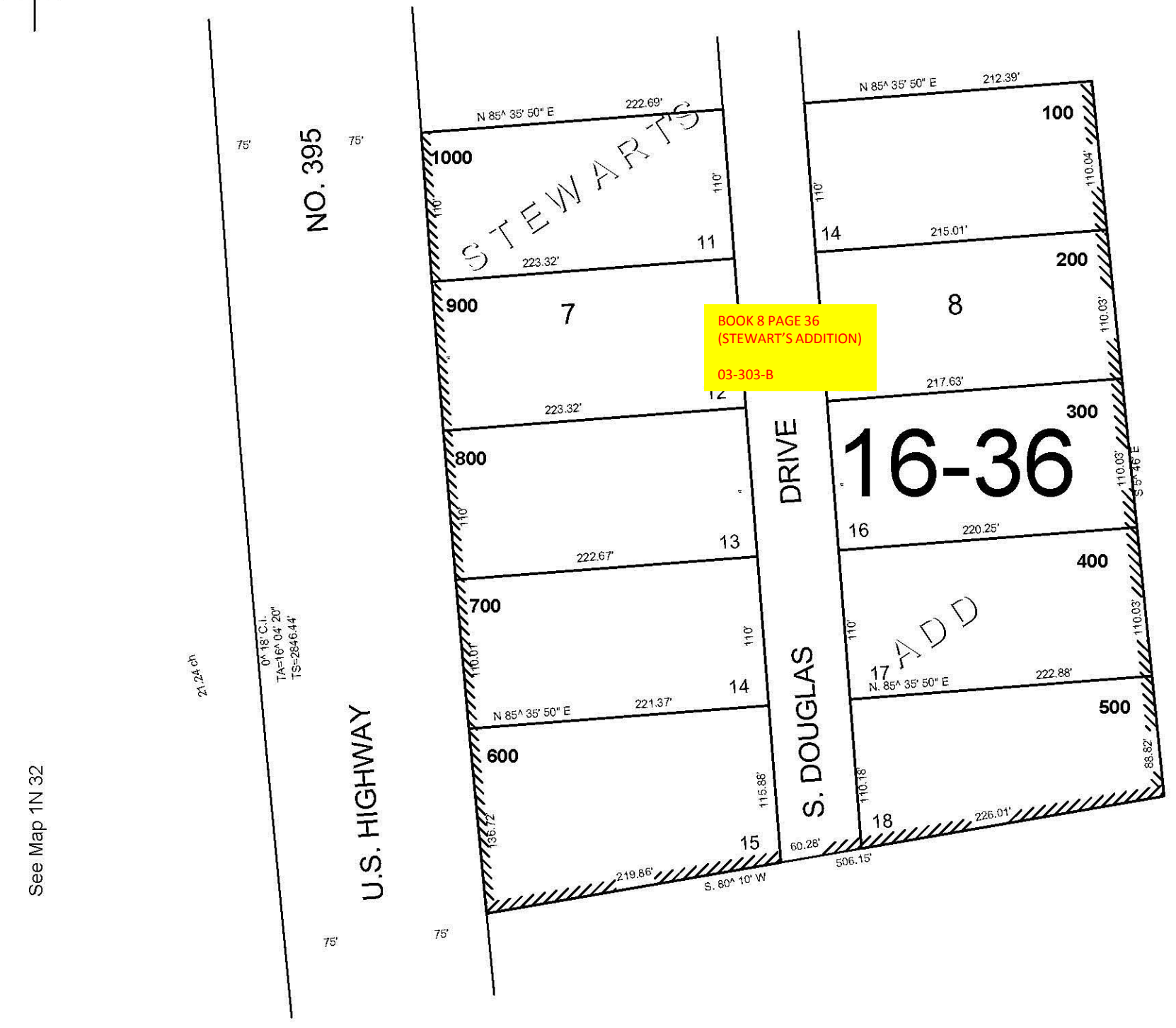
1N 32 03BD

AERIAL PHOTO NO. 4P-6

See Map 1N 32 03BA

1/16 Cor.

1/16 Cor.



See Map 1N 32

See Map 1N 32

See Map 1N 32

1/16 Cor.

Ctr. Sec.

1N 32 03BD