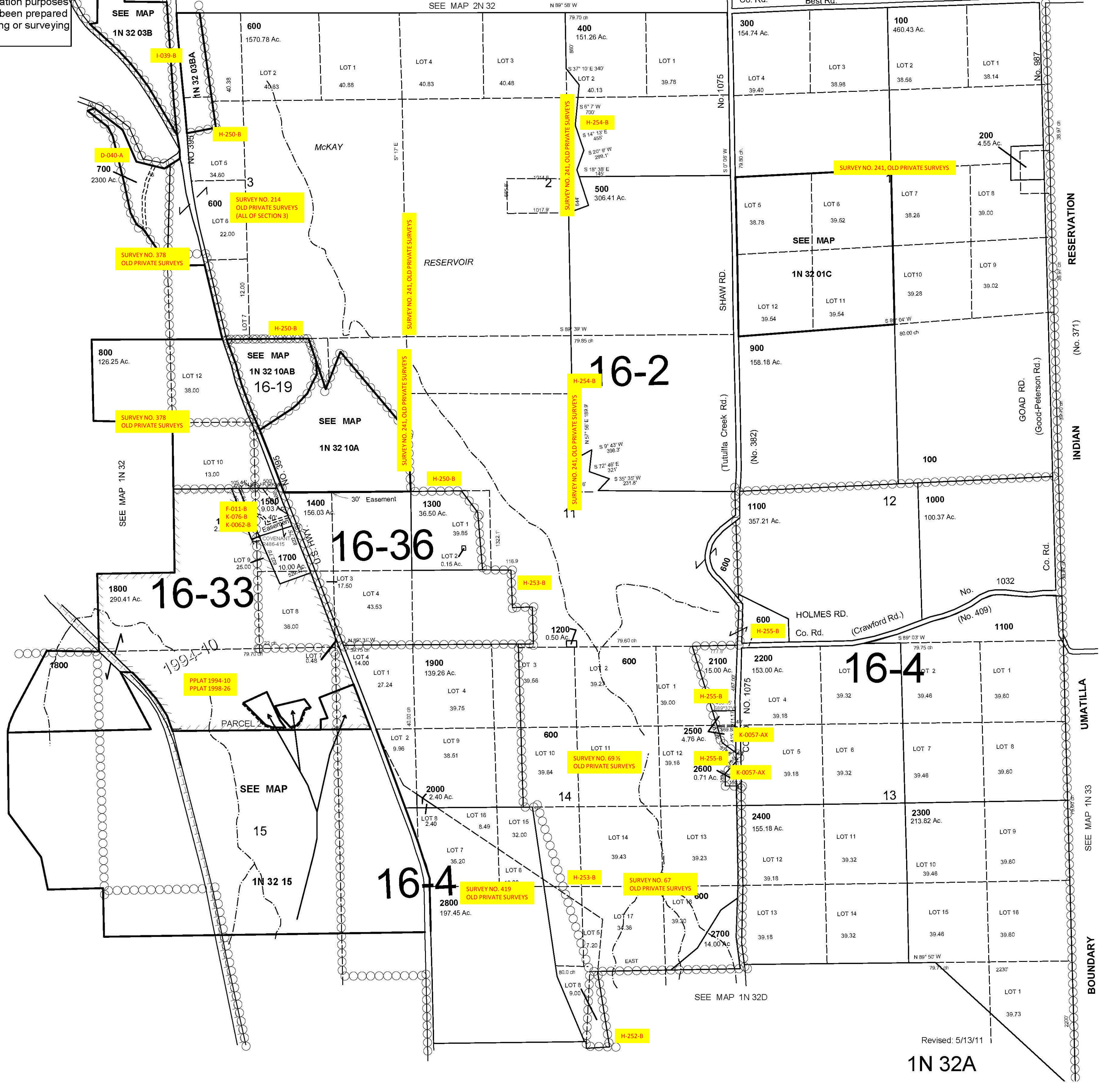


ALSO SEE SURVEYS 10-093-C, 94-109-C, Q-0056-AX, R-0079-A; CORNER RECORDS; G.L.O. SURVEYS

This map was prepared for Assessment & Taxation purposes only and has NOT been prepared for legal, engineering or surveying purposes.

NE1/4 T1N R32E WM UMATILLA COUNTY

AERIAL PHOTO NO. 3P-91, 180, 184, 134, 139 & 4P-4 & 8
Co. Rd. Best Rd. (No. 417) No. 950 1N 32A



Revised: 5/13/11

1N 32A