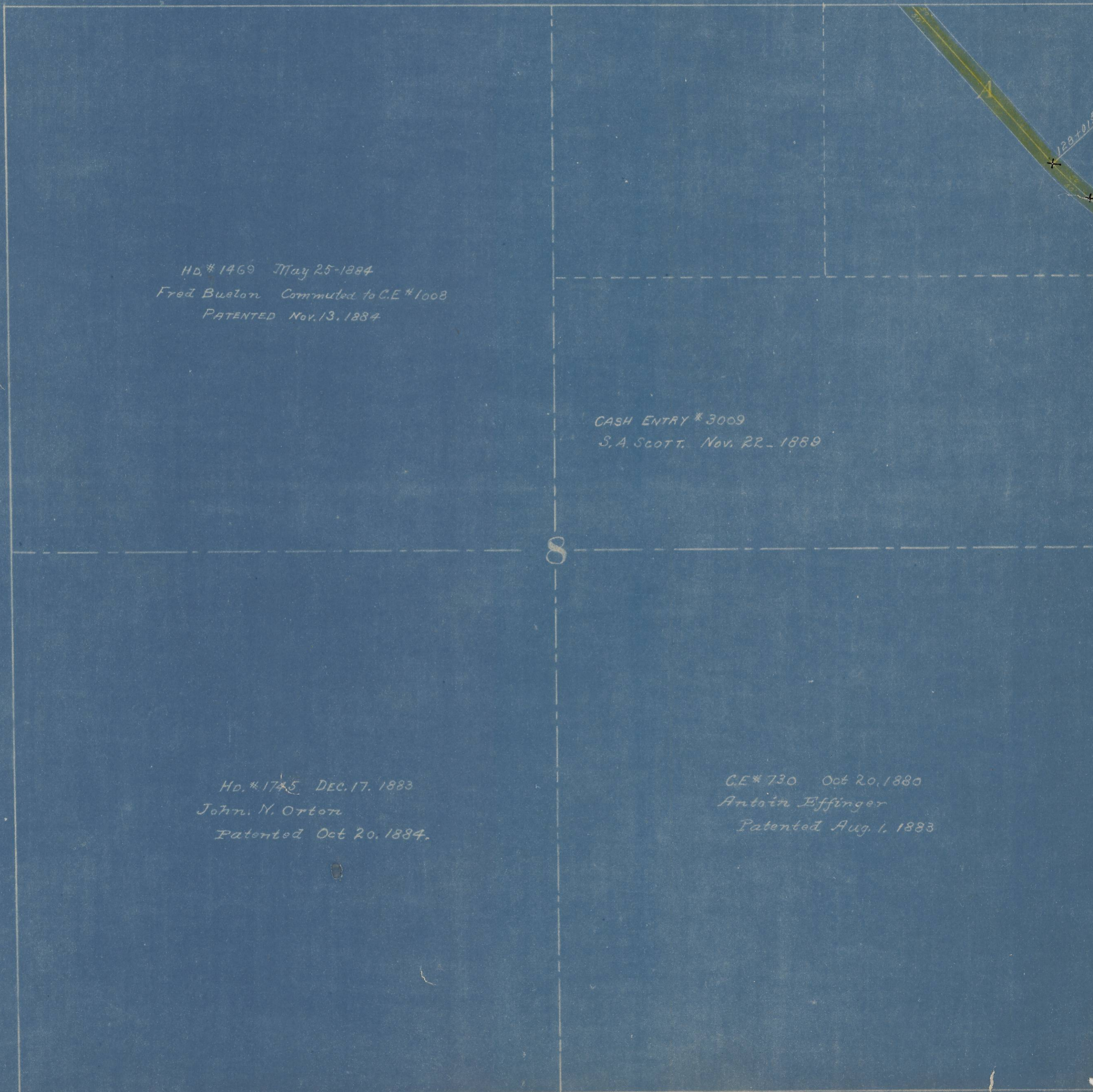


N.P.R.

Wallula to Pendleton Right of Way Plat  
State of Oregon County of Umatilla  
Sec. 8 Township 5 N. Range 33 E. of Willamette Meridian

Scale 400ft. 1 Inch

Note: Boundary of Right of Way denoted thus.....



Hd. # 1469 May 25-1884  
Fred Buxton Committed to C.E. # 1008  
PATENTED Nov. 13, 1884

CASH ENTRY # 3009  
S. A. SCOTT. Nov. 22-1889

Hd. # 1745 DEC. 17, 1883  
John N. Orton  
Patented Oct 20, 1884.

C.E. # 730 Oct 20, 1880  
Antoin Effinger  
Patented Aug. 1, 1883