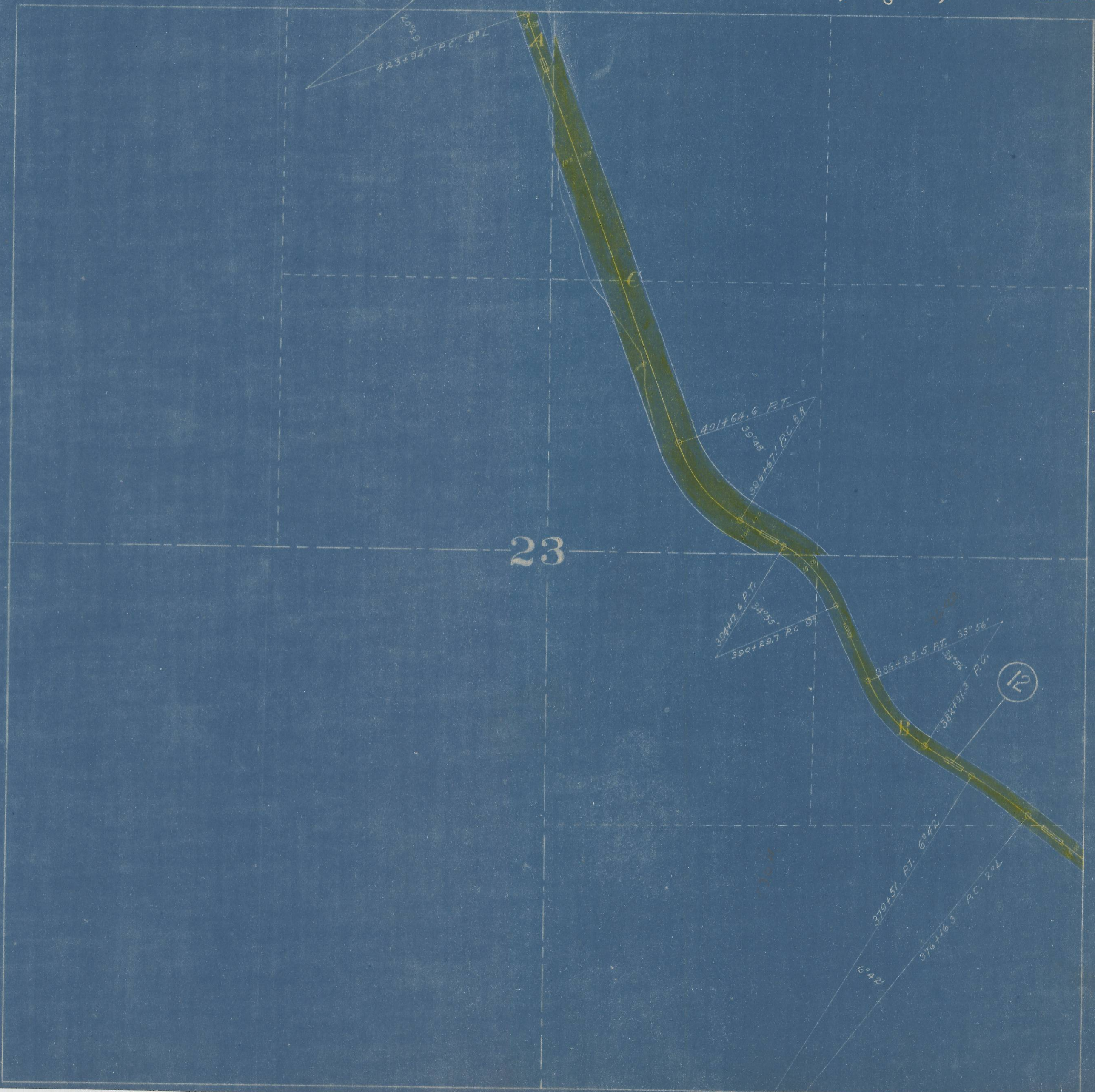


N. P. R.
 Wallula to Pendleton Right of Way Plat
 State of Oregon County of Umatilla
 Sec. 23 Township 6 N Range 32 E of Willametta Meridian

Scale 400 ft. 1 Inch

Note: Boundary of Right of Way denoted thus



23

12

20° 29'
 423+92.1 P.C. 8° L

401+64.6 FT.
 55° 48'
 309+67.1 P.C. 3 R

304+7.6 P.T.
 34° 55'
 390+29.7 P.C. 9°

336+25.5 P.T. 33° 56'
 35° 08' P.C.
 382+07.3

379+51.1 P.T. 6° 42'
 376+16.3 P.C. 2° L
 6° 42'