

2000	Ed. D. H.
2001	W. G. Bookum
2002	F. Temple
2003	H. G. Bookum et al
2004	Thos. Baker
2005	do
2006	United States
2007	John A. J. J. J.
2008	M. E. Shullum
2009	W. Hopper
2010	W. Hopper

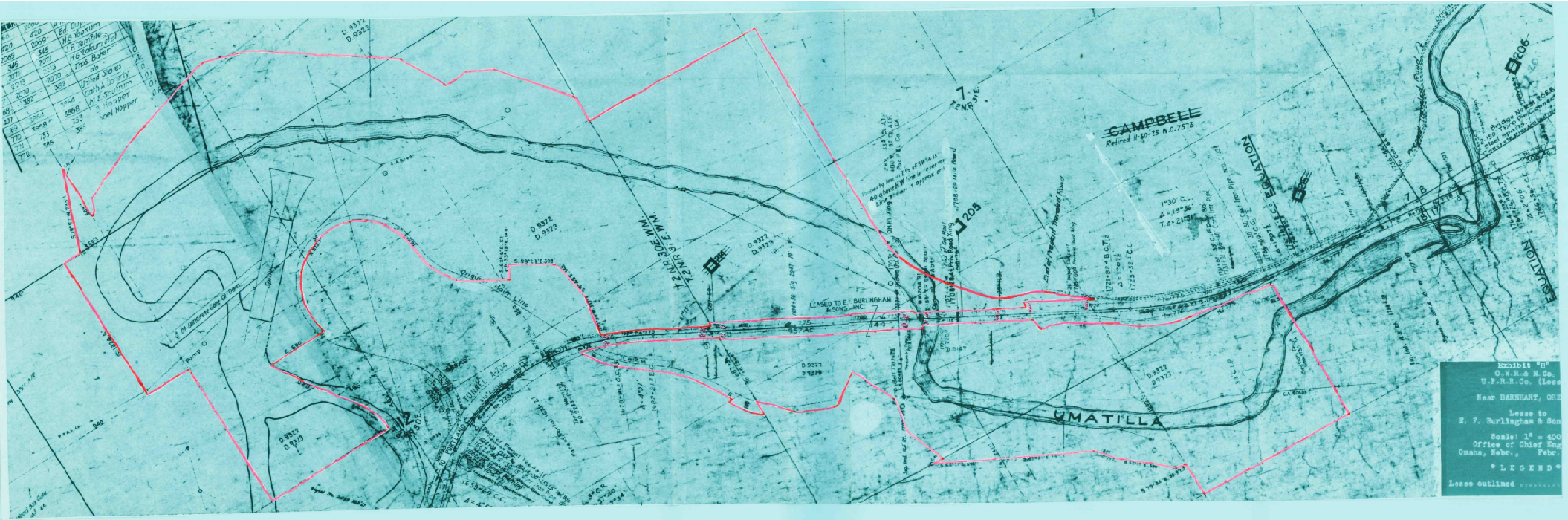


Exhibit "B"
 O.W.R. & H.Co.
 U.P.R.R.Co. (Lease)
 Near BARNHART, ORE.
 Lease to
 E. F. Burlingham & Son
 Scale: 1" = 400'
 Office of Chief Eng.
 Omaha, Nebr., Febr.
 * LEGEND *
 Lease outlined