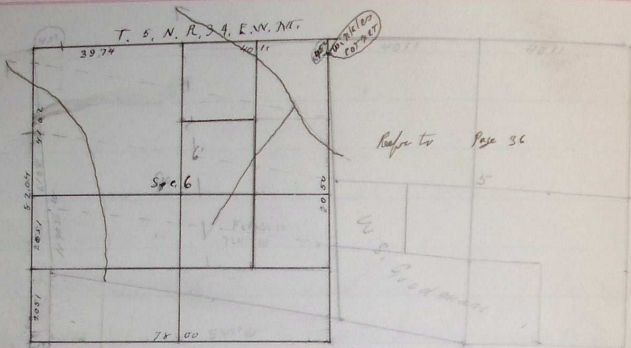


Fred Johnson

March 4th 1914

Chains Links



Commencing at the corner to Sec 5-6-31 432 Previously established by myself in June 1906

thence I run South bet Sec 5 & 6

- 45 2 a point - 25 lks West of corner set by Mr. Windle
- 74 00 a point 194 lks West of corner set by myself in 1906 for corner to sec 6-7 88
- 80 50 the cor claimed to be found by Mr. Windle for corner to sec 5-6-7 88
thence at right angle to the right from said line bet 205 86 I run West end at.
- 78 50 a point 455 lks North of corner claimed by Fred Johnson dog up the State
at point a Mr. Slen claims his Father settles by supposes to be in 1860
J 5 N to 336 W on All present - agreed it must be the original corner to Sec 1-12-6 87
I there at request of Mr. Johnson started at the top of the corner on Range line
bet Sec 12 824 and run North end at 40.50 the corner to Sec 15-24-18 915
thence North bet Sec 13 915
- 81 65 the corner to Sec 12-15-7 515 proven to be the better AS the corner, no correspondence
to No Field notes as in previous No.
thence North bet Sec 7-12 Expanded from North on old line of face Standing by post 2500000000
- 40 53 a point - 8 lks East of $\frac{1}{4}$ Sec one old State set by myself in 1906 in old corner to Sec 8 30
- 60 53 a point - 7 27 lks East of corner to Sec 1-12-6 57 on Range line as above.
- 80 00 corner set by myself in 1906 for corner to Sec 1-12-6 17
Expanded this North bet Sec 1 95
- 62 25 a point - 805 lks East of corner to Sec 5 86 N Range 33 484 6 run per old State in 1906
Corner bet Sec 6 931 on old line
- 39 74 a point - 147 lks West of old top of corner bet Sec 6 931

Chains

Links

From Jp on to Sta 546 N Hoys 33 834

Set Sta for 1 56

11 80 creek NW

40 11 Set Sta 27 1/2 from

60 11 " " to cr

82 04 a point - 525 lbs East of old post claimed to be on to Sta 1-12-617
then N 21° 21' E on line Sta

20 51 Set Sta 14 x 5 x 6 for to cr

49 02 " Sta 16 x 4 x 5 for to cr on old typo post also same

52 04 The case to Sta 1-6-31836 & Jp 5 8 1 N Hoys 83 854
N 27° 51' E on line Sta Set Sta 687

38 15 Set Sta 16 x 16 x 6 for to cr

West High Center Sta 6 8200 a point 15 lbs East of old to cr
Set Sta on line Sta

20 50 Set Sta 16 x 10 x 12 in for to cr

41 01 Set Sta 16 x 8 x 8 for cr Sta 6
West High center Sta 6

37 61 line N 83° line

77 22 Sta to cr on Set Sta

West on line Sta

38 61 Set Sta 20 of Sta 16 x 10 x 12

West High center N 8° to Sta 6

20 05 Set Sta 12 x 8 x 5 in for to cr on a cr N 8° to Sta 6

West High center 5 6 1/4 Sta 6

40 52 To to cr line Sta on line Sta

20 13 Set post for to cr on line Sta.

By Kimball, County Surveyor by John W. Kincaid Deputy
 assisted by W. H. Singer and H. J. Mandel Chairman and Frank Karcher Elmer.

Refer to page 36 1906