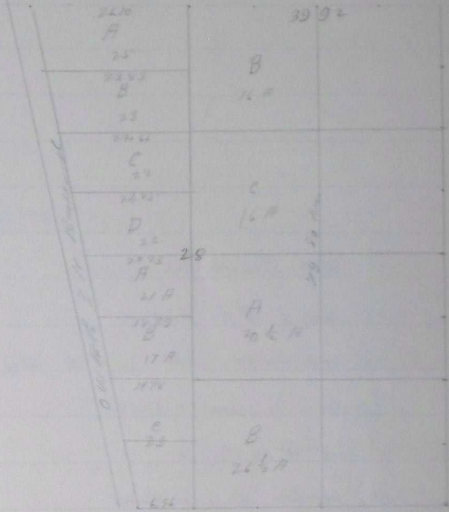


By Request of W. Henry & Eddie T. McKay c/o Omaha 68001's West Side Road John Allsburg

Loc 28 S 5 N 16 28 Co. W. M. 1911

Chains Links

North North Centre No 28



10 00  
20 00  
30 00  
40 00  
50 00  
60 00  
70 00

8000 the tape on lot no 21 928  
lot no 21 928  
2000  
39 92 a point 69 ft from of to no 21  
66 10 lot line of Railroad Right of way  
71 6 3 corner line  
80 97 the en to no 20-21-28 929

By Kinber Co. Survey by John W. Kinber deputy