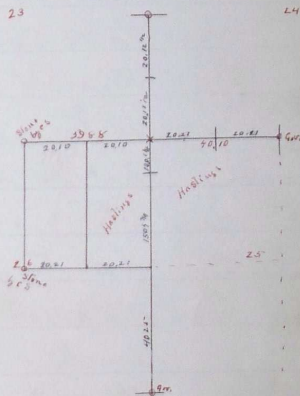


RECORD OF SURVEY No. 266

Survey for W J Hastings J 4 N B 356 May 12 1906

Chains Links

- Commences at the 1/4 Sec cor bet Secs 24 & 25 -
- thence west bet Sec 24 and 25 -
- 20 05 set Survey '116 cor
- 40 10 set Survey cor for Secs 23-24-25 & 26 The original cor Placed up
- thence west bet Secs 23 & 26
- 19 94 set Survey '116 cor
- 40 64 a point - 52 lks South of 1/4 Sec point bet Secs 23 & 26
- from the 1/4 Sec cor bet Secs 25 & 26 1/2 mi
- North bet Secs 25 & 26
- 40 00 set Survey cor for Secs 23-24-25 & 26
- thence North bet Secs 23 & 24
- 20 08 set Survey '116 cor
- 40 50 The 1/4 Sec cor bet Secs 23 & 24
- South on same line bet Secs 23 & 24
- 20 12 1/2 set Stone for 1/16 cor
- 40 25 set Stone for cor to Secs 23-24-25 & 26
- East on same line bet Secs 23 & 26
- 20 10 set Stone for 1/16 corner
- 40 20 the same cor to Secs 23-24-25 & 26
- thence East on same line bet Secs 24 & 26 -
- 20 21 set Stone for 1/16 corner
- 40 42 The 1/4 Sec cor bet Secs 24 & 25 -
- East from center of Sec 26 through center of Sec 26
- 20 00 set Survey '116 corner
- 40 42 the 1/4 Sec cor bet Secs 25 & 26
- thence west on same line through center of Sec 26
- 20 24 set Iron pipe for 1/16 an in center of Sec 26
- 40 42 the center Sec. 26



John W. Kimbrell County Surveyor

Ed. Tucker Chairman

W. J. Hastings "

Geo. Stagg J. Loggins