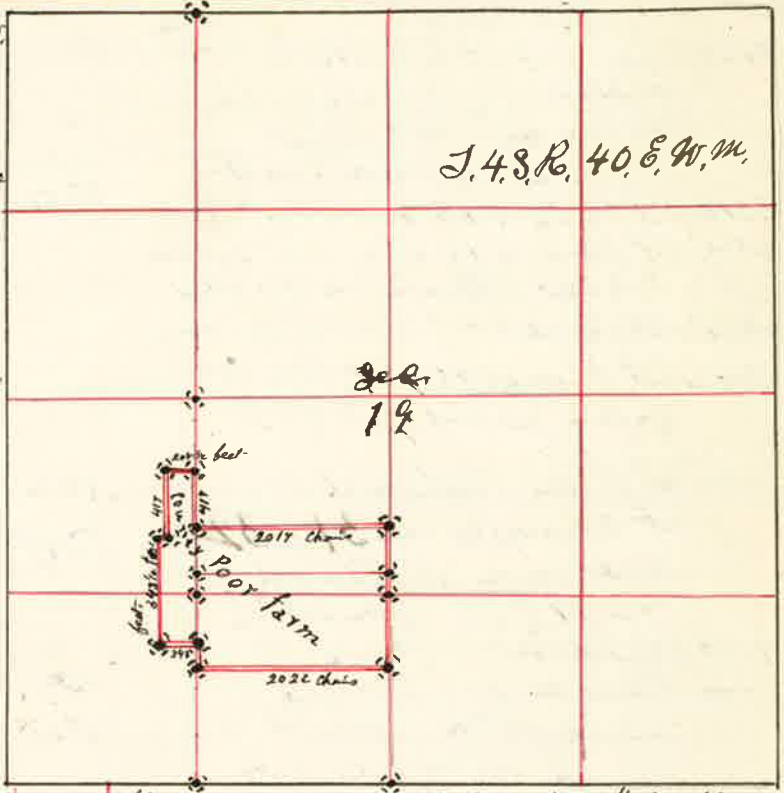


Surveyed for Union County on April 3 1889

By W. Kimbrell Co Surveyors Plat No 73

I commenced at the N.W. corner to Sec 19
 thence East on offset of 250 lks South
 2000 Set Temporary stake for 1/8 corner
 250 lks North of offset line
 4000 Set North 250 lks on line
 Set stake for Temporary 1/4 Sec corner. The old corner being lost
 East on same line, 20° 15' E
 8000 Found No Sec. corner to Sec 18 = 17 = 19 & 20
 thence East var 20° E
 4030 Intersect 1/4 Sec corner bet Sec 17 & 20 26 lks South of corner
 making an excess of 17 lks over U.S. Field Notes
 I there fore run west and at
 10027 Groove a Bolt of Iron 1/2 inch thick and 8 inch long in center of street on North East of bridge for 1/8 corner.
 I then started again at the N.W. corner of Sec 19 and run South on range or Guide meridian var 20° 15' E
 8025 the corner to Sec 19 = 30 = 24 & 25 being an excess of 25 lks over U.S. Field Notes
 from this corner I run East var 20° E
 1980 Set stake for Temporary 1/8 corner
 4000 Intersect 1/4 Sec corner bet Sec 19 & 30 35 lks South of corner from which I run West on true line
 4010 Set Stone 7x10x12



The 1/8 corner on North side N.W. 1/4 Sec 19
 thence South var 20° E
 4025 the center W 1/2 Sec 19 Set Stone 6x8x22 inch
 8032 the 1/8 corner on South side N.W. 1/4 Sec 19
 the 1/4 Sec corner on South Boundary Sec. 19. Thence North through center Sec 19
 8059 the 1/4 Sec corner on North Boundary Sec 19
 the center W 1/2 Sec 19 thence South var 20° E on subdivision line
 feet 52 1/4 Set Stone 3x12x30 inch
 thence West
 208 1/2 Set Stone 5x7x24 inches
 thence South
 417 Set Stone 7x7x18 inches
 thence West
 45 Set Stone 4x10x18 inches
 thence South
 343 1/2 Set Stone 5x9x24 inches
 thence East
 253 1/2 Set Stone 4x6x20 inches
 thence North
 343 1/2 feet Set Stone 4x5x18 inches
 thence North
 417 Set Stone 3x12x30 inch in the Poor farm's yard.

Surveyed for Union Co April 3 & 4 1889

Beginning at a point: 250 yards North of the chain S E corner S.W. 1/4 Sec. 19 a stone 8x6x24 inches

thence North
 1000 Set Stone 3x12x18 inches
 thence North
 500 Set Stone 7x11x21 inches
 thence West
 2017 Set Stone 3x12x24 inches
 thence South
 500 a Stone 3x7x18 inches
 thence South
 1000 Set Stone 3x10x22 for center S.W. 1/4 Sec. 19
 thence East
 2022 The place of beginning a stone 8x6x24 which is the S E corner of the Poor farm

W Kimbrell County Surveyors for Union Co. Oregon