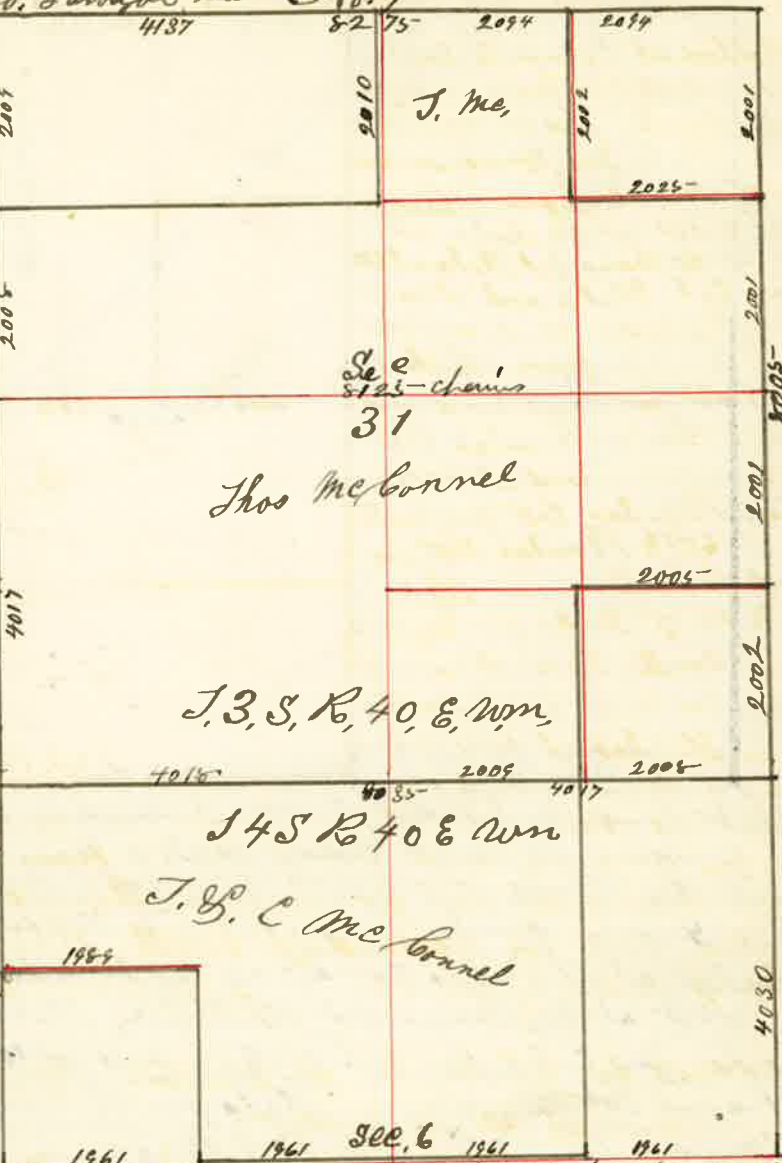


Surveyed for Thos. McConnell April the 8 1887

By J.W. Kimbrell Dep't. Co. Surveyors Plat No. 4

I started at the 4 corners to T 38, 48, R. 38, 40, E. Wm. from which I run East at 40 chains set Post for temporary 1/4 Sec. corner and at 60 chains set Stake for temporary 1/4 cor. and at 80 85 chains the corner to Sec 5-6=31 82 from which I run West 20 0 E and at 2008 Chains Planted Stone for 1/4 corner and at 4017 Planted Stone in Mound of Stone for 1/4 Sec. Corner between Sec 6 & 31 I then started at the S. E. corner of Sec. 31 thence North at 20 set a Post for temporary 1/4 corner at 40 chains set Stake for temporary 1/4 Sec. corner at 60 chains set Stake for temporary 1/4 corner and at 8005 chains the N. E. corner Sec. 31 from which I run South on true line 19 0 E and at 2002 chains Planted Stone for 1/4 corner at 4002 chains Planted Stone for 1/4 Sec. corner between Sec 31 & 32 and at 6003 chains set Stone for 1/4 corner thence West 2005 chains and set Stone for 1/16 corner.

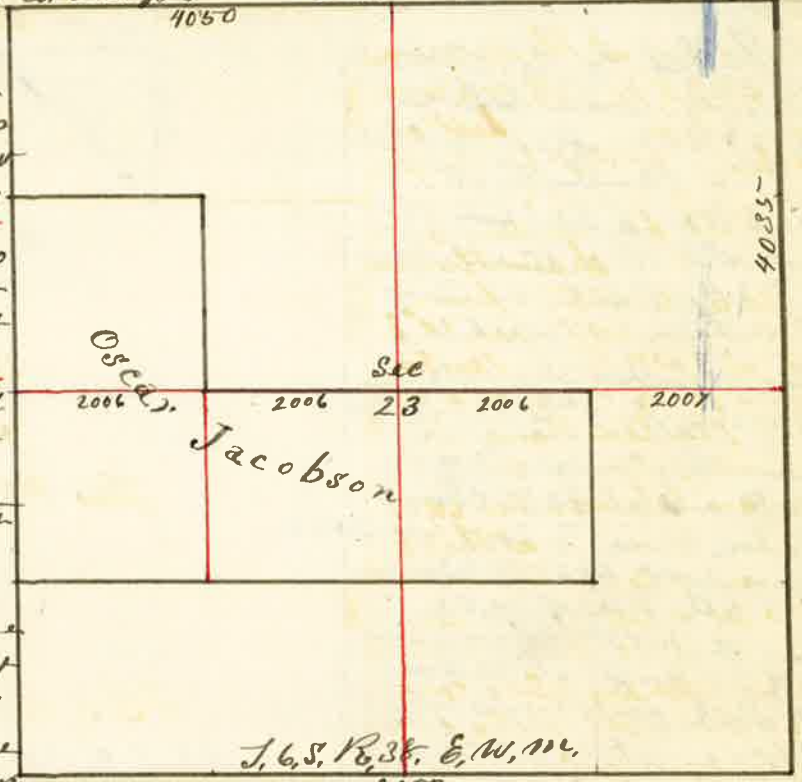


I then started at N. E. corner of Sec 31 from which I run West at 20 chains set Stake for temporary 1/4 corner at 40 chains set Stake for temporary 1/4 Sec. corner from which I run East on true line and at 4137 Planted Stone for 1/4 Sec. corner and at 6194 chains Planted Stone for 1/4 corner from which I run South and at 2002 chains Planted Stone for 1/16 corner. I then started at N. W. corner of Sec 31 thence South at 20 chains set Stake for temporary 1/4 corner at 40 chains set Stake for temporary 1/4 Sec. corner at 80 85 chains the Sec. corner to Sec 1-6=31 82 from which I run North and at 4017 chains Planted Stone for 1/4 Sec. corner and at 6026 chains set a Stone for 1/4 corner in the side of a ditch. I then started at 1/4 Sec. corner on west side of Sec 31 from which I run East at 40 chains set temporary Stake for center at 81 25 chains the 1/4 Sec. corner on East side I then started at 1/4 Sec. corner on North side of Sec 31 from which I run South at 2010 chains set Stone for 1/16 corner at 4025 the 1/4 Sec. corner on South side Sec 31. I then started at N. E. corner Sec 6 thence 4030 thence West 1961 set Stone and at 3922 chains set Stone for 1/4 Sec. corner between Sec 6 & 7 at 5883 set a Stone for 1/16 corner at 7844 the 1/4 Sec. corner then on North 2015 chains Planted a Stone for 1/4 corner thence East 1987 chains set Stone for 1/4 corner J.W. Kimbrell Dep't. Co. Surveyors

Surveyed for Oscar Jacobson April the 14 1887

By J.W. Kimbrell Dep't. Co. Surveyors Plat No. 5

I started at corner to Sec. 23 = 14 = 23 82 4 from which I run South and at 4035 chains found the 1/4 Sec. corner on East side of Sec. 23 from which I run West at 20 chains set Stake at 40 chains set Stake at 60 chains set Stake and at 8025 chains the 1/4 Sec. corner on West side of Sec. 23, from which I run East on true line and at 2006 chains Planted Post for 1/16 corner and at 4012 chains Planted Post for center and at 6018 Planted Post in Mound of Earth with Pits S. E. & N. W. of Stake for 1/16 corner thence South 2015 chains set Post for center of S. E. 1/4 Sec 23 I then started at N. W. corner of Sec. 23 from which I run East at 20 chains set Post for temporary 1/4 corner and at 4050 chains the 1/4 Sec. corner on North side of Sec 23 from which I run West and at 2025 chains set Post for 1/4 corner thence South 20 chains and Planted Post in Mound of Earth Pits S. E. for 1/16 corner in center of N. W. 1/4 Sec 23 J.W. Kimbrell Dep't. Co. Surveyors



Surveyed for E. L. Hughes for John Hale April 15 1887

By J.W. Kimbrell Dep't. Co. Surveyors

No. 6

I started at 1/4 Sec. corner on west side of Sec 22 from which I run East and at 6000 chains the 1/4 Sec. corner on East side Sec. 22. Thence South and at 20 chains set temporary Stake for 1/4 corner at 4012 chains the Sec. corner from which I run North on true line and at 2006 chains Planted Post and built mound of Earth Pits S. E. & N. W. for 1/16 corner on East side of S. E. 1/4 Sec 22 thence West and at 1985 chains Planted Post for 1/16 corner in center of S. E. 1/4 Sec 22 I then started at corner to Sec 22 = 23 = 26 82 7 from which I run West at 20 chains set Stake for temporary 1/4 corner at 40 40 the 1/4 Sec. between Sec 22 & 27 thence East on true line at 1970 chains Planted Stake in Road Glass at Bottom for 1/4 corner I then started at 1/4 Sec. corner on East side of Sec 27 thence West and at 20 chains set Stake. Dep't. Co. Surveyors J.W. Kimbrell

