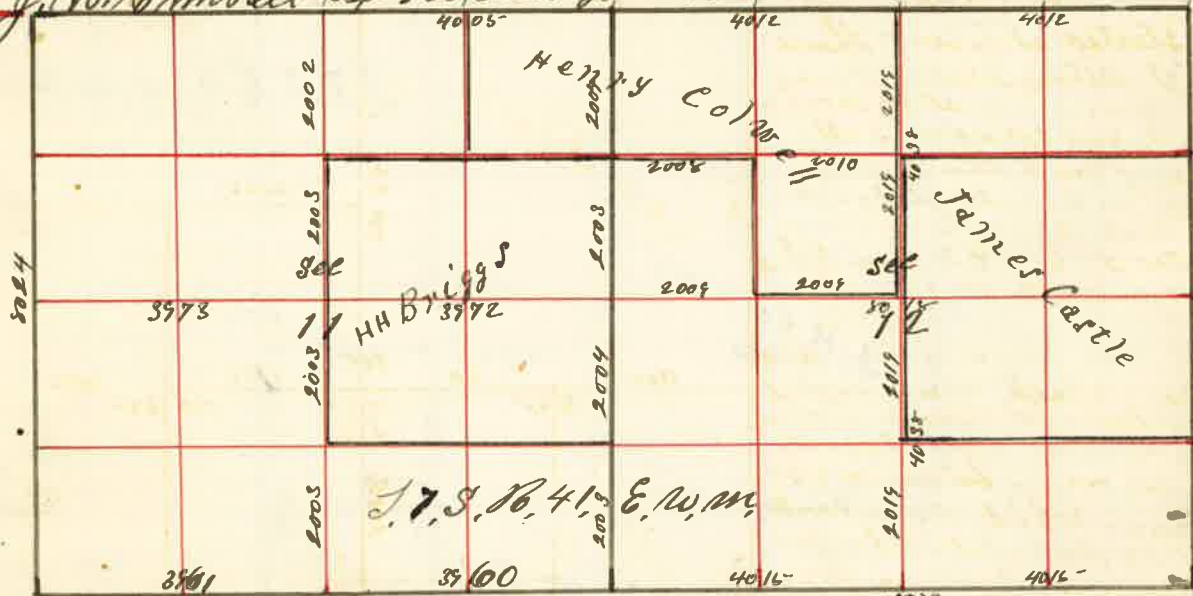


Surveyed for Brig's Colwell & Castle Mar. 24 1884

by J.W. Kimbrell Dep't. Co. Surveyor Plat No. 25

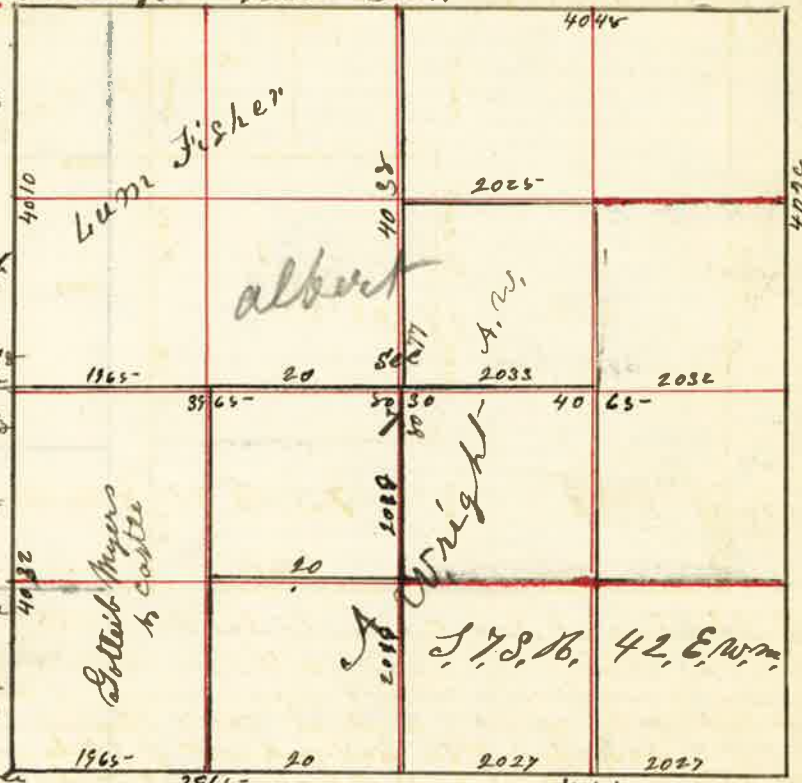


I started at Sec. corner to Sec 1 = 2 = 11 & 12 thence South and at 8015 chains I entered South boundary of Sec 11 17 links west of corner to Sec 11 = 12 = 13 & 14 from which I run North and at 2003 set post for 1/4 corner and at 4007 chains set post built mound of earth and dug pits East and west of stake for 1/4 sec corner between Sec 11 & 12 and at 6011 chains set stake for 1/2 corner. The line to Sec 11 = 12 = 13 & 14 thence West at 40 chains set stake for temporary 1/4 sec corner and at 7921 chains the S.W. corner of Sec 11 from which I run East on line and at 3901 chains set stake for 1/4 sec corner from which I run North at 20 chains set post for temporary 1/16 corner at 40 chains set stake for temporary stake for center of Sec. 11 and at 60 chains set temporary stake for 1/16 corner and at 8011 chains the 1/4 sec corner on North side of Sec 11. I started at 1/4 sec corner between Sec 11 & 12 thence West at 40 chains set stake for center I independently of first boundary stake to center at 7945 chains the 1/4 sec corner between Sec 10 & 11 which point I determined for temporary use. (The corner being gone) by starting at the N.W. corner of Sec. 11 and running South to S.W. corner of Sec 11 8024 chains and at the equidistant point I run East on line and at 3973 chains set post for center of Sec. 11. Thence North 2003 chains set stake and built mound for 1/16 corner. Thence South from center 2003 chains and drove stake and dug pits and built mound of earth for 1/16 corner. I started at 1/4 sec corner between Sec 11 & 12 thence East at 20 chains set stake for 1/16 corner and at 40 chains set stake for center of Sec 12 at 8018 chains the 1/4 sec corner on East side of Sec 12. I then started at 1/4 sec corner on North side of Sec 12. Thence South at 20 chains set stake for 1/16 corner at 40 chains set stake for center I independently of first center stake at 60 chains set stake at 8079 I intersect South boundary of Sec 12 78 links East of center. The 1/4 sec corner being gone I proceeded to reestablish it by starting at S.W. corner of Sec 12 thence East at 40 chains set temporary stake for 1/4 sec corner at 8030 chains the S.E. corner Sec 12 from which I run West and at 4015 chains set stake built mound. Thence South and at 2018 chains set post for 1/16 corner at 4032 center stake in mound of stone at 6057 set post for 1/16 corner. Thence West 2006 chains set post for 1/16 corner thence South 2015 chains set post for 1/16 corner. The 1/4 sec corner on East side Sec 12 thence North 20 chains set post for 1/16 corner. 1/4 sec corner East side Sec 12 South 2016 chains set stake for 1/16 corner on East side S.E. 1/4 Sec 12.

J.W. Kimbrell Dep't. Co. Surveyor

Surveyed for Castle Wright & Fisher Mar. 26 1888

by J.W. Kimbrell Dep't. Co. Surveyor. Plat No. 26



I started at 1/4 Sec 7 thence East setting stakes at every 20 chains and at 8030 chains the 1/4 sec corner on East side of Sec 7. Thence North and 20 chains set stake and at 4028 chains the Sec corner to Sec 5 = 6 = 7 & 8 from which I run South at 2014 chains set stake in mound of stone the Sec corner to Sec 5 = 6 = 7 & 8 from which I run West at 20 chains set stake for temporary 1/8 corner at 4048 chains the 1/4 sec corner between Sec 6 & 7 from which I run South at 20 chains set stake for temporary 1/16 corner 4028 chains I entered the East & West line through center stake at 60 chains set temporary 1/16 corner at 8077 chains the 1/4 sec corner on South side of Sec 7 from which I run North and 2019 chains set stake for 1/16 corner at 4038 chains set permanent stake in mound of stone for center and at 2019 chains set stake and built mound for 1/16 corner thence East and 2025 chains set stake and built mound for 1/16 corner in center of N.E. 1/4 Sec. 7. Thence South 2015 chains set stake in mound of stone for 1/16 corner. The center of Sec 7 from which I run West at 20 chains set stake and built mound of earth for 1/16 corner. I started at 1/4 sec corner on South side of Sec 7 thence East at 20 chains set boundary stake at 4054 chains the Sec corner to Sec 7 = 8 = 13 & 14 from which I run West at 2027 chains set stake and built mound for 1/16 corner at 4054 the 1/4 sec corner. and at 20 chains South West I set stake for 1/8 corner at 4065 chains the Sec corner to 7 = 13 = 12 & 13 from which I run North at 2016 chains the 1/8 corner thence East 1965 chains and set stake built mound of earth and dug pits S.E. for 1/16 corner in center of S.W. 1/4 Sec. 7.

J.W. Kimbrell Dep't. Co. Surveyor