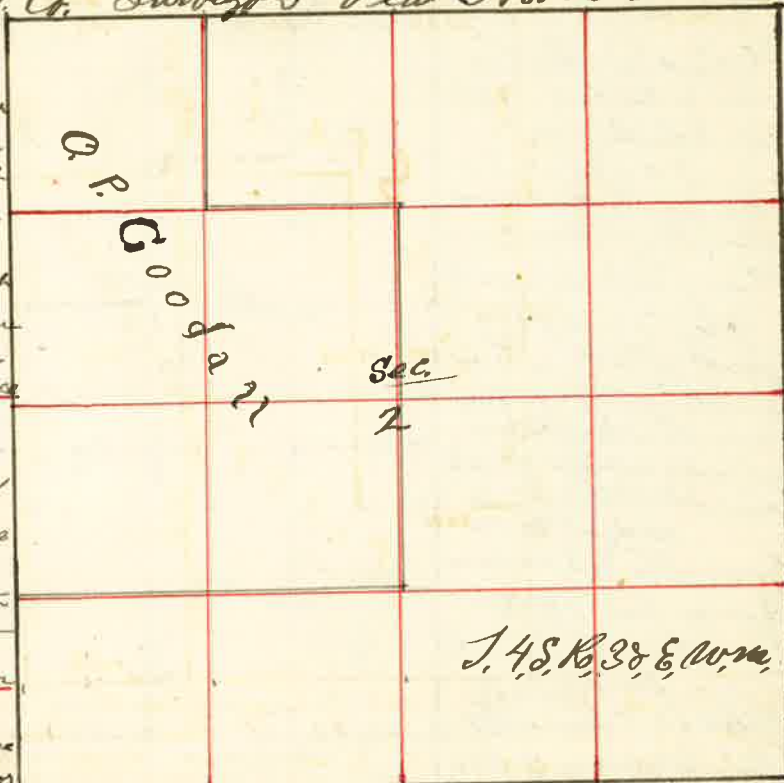


Surveyed for O. P. Goodall Oct. the 27 1887

by J. W. Kimbrell Dep't. Co. Surveyor Plat No. 20

I started at the N. W. corner of Sec. 2 thence East between Sec. 2 & 35 at 20 chains set temporary stake for 1/2 corner 4002 chains the 1/4 sec corner between Sec 2, 35 from which I run West var 20° E and at 2007 chains set stake for 1/2 corner

I then started at 1/4 sec corner on North side of Sec 2 thence South at 20 chains set stake for 1/6 corner at 40 chains set stake for temporary center of Sec. 2 at 60 chains set stake for temporary 1/6 corner at 80 41 chains I started South boundary of Sec. 2 30 links East of corner. from which I run North on true line and at 200 chains set stake for 1/6 corner and at 4020 ch set stake for



center of Sec 2 and at 6030 chains set stake for 1/6 corner

I then started at S.W. corner of Sec 2 thence North and at 20 chains set stake for temporary 1/8 corner and at 4022 chains the 1/4 sec corner on west side of Sec. 2 and at 6022 chains set stake for 1/2 corner at 8036 the N.W. corner of Sec 2 from which I run South and at 2014 chains set Iron Bolt in the ground in front of Henry Lewis Blacksmith Shop and set a witness stake 28 links East of true corner

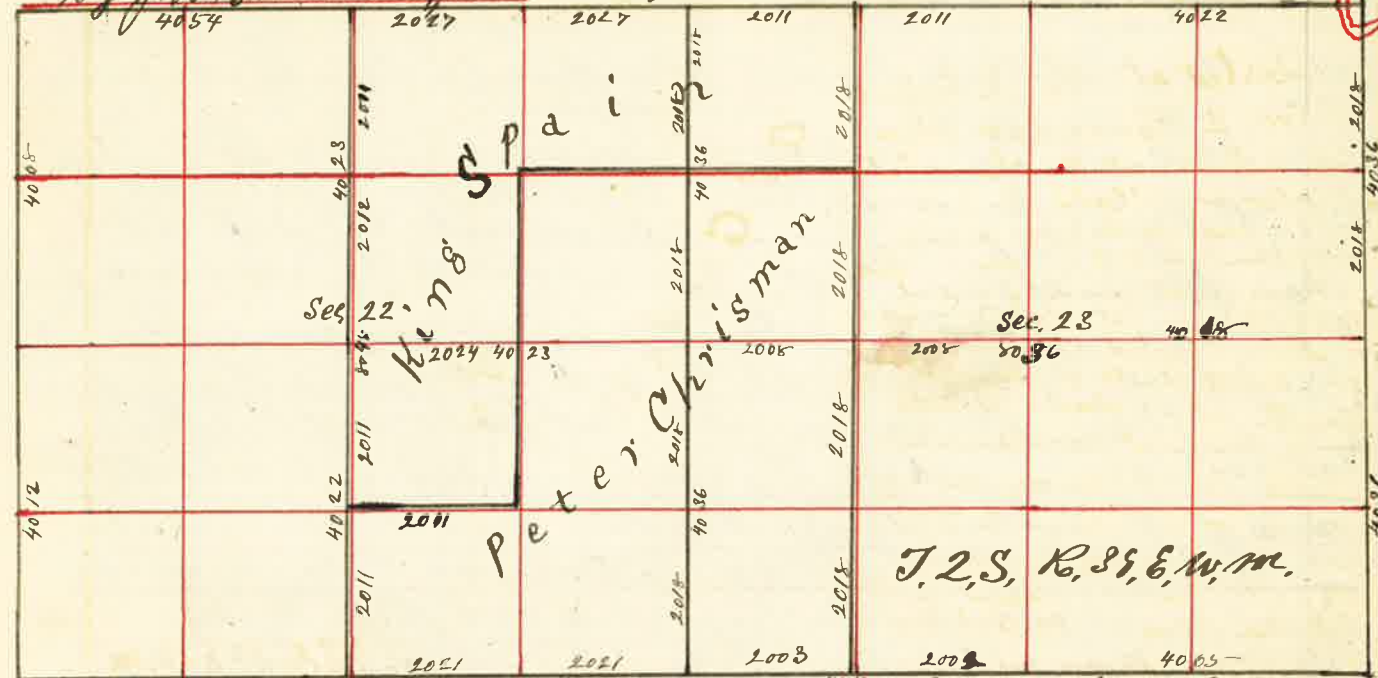
I then started at the 1/4 Sec corner on West side of Sec 2 thence East at 20 chains set stake for 1/6 corner at 40 chains the center of Sec 2 at 8017 chains the 1/4 Sec corner on East side of Sec. 2

I then started at the 1/6 corner in center of N. 1/2 Sec 2 and run South 4 chains to road thence West 20 chains thence North 4 chains to center of N.W. 1/4 Sec 2 and drove stake on North side of County Road for true center of N.W. 1/4 Sec 2, J. 48, R. 38, E. 10, M. thence West 20 chains to 1/8 corner at H. Lewis Shop.

J. W. Kimbrell Dep't. Co. Surveyor

Surveyed for Chrisman & Spain Nov the 5<sup>th</sup> 1887

by J. W. Kimbrell Dep't. Co. Surveyor Plat No. 21



There being no original corners standing in place to these 2 Sections except the N.W. corner of Sec. 22, it being necessary to re-establish them I therefore proceeded to the 1/4 sec corner between Sec. 14 & 15 and run South and at 40 chains set stake for temporary Sec. corner and at each 20 & 40 & 60 & 80 chains between Sec. 22 & 23 set Random stakes, and extending my line on South finding no corners until I got to the township line between T. 28, 29, 30, 31, 32 at which point I had an excess of 260 links to be divided Proportionately

I therefore run North 16148 Chains and set stake for temporary Sec. corner and at 2018 chains set 1/8 stake and at 4037 set 1/4 Sec stake and at 6055 set 1/2 stake and at 8074 chains set stake for Sec. 14-15-22 & 23

I then proceeded to the Sec corner to Sec 20-21-28 & 29 thence East on true line driving Random stakes at each 20-40-60-80 chains on South boundary of Sec 22 and 23 and found no original corners until I got to the sp line being 4,880 at the S.E. corner of Sec 24 and at which point I had an excess of 229 links more than the original measurement for the 4 miles, I therefore run West and at 8011 chains set stake for temporary Sec. corner to Sec 23-24-25-26 and at 4005 chains set stake for 1/4 Sec corner and at 6008 set stake for 1/2 corner and at 8011 chains set stake for 1/4 Sec corner and at 4041 set stake

thence West at 2021 chains set stake for 1/8 corner between Sec. 22 & 27, I then started at 1/4 Sec corner chains set 1/4 Sec corner, between Sec. 22 & 27, I then started at 1/4 Sec corner between Sec 18 & 24 and run West at 40 chains set stake and at 40 chains further on I set Random stake for 1/4 Sec corner between Sec 28 & 14 and at 20-40-80 chains set stake for 1/8 Sec corner and, the Sec corner to Sec 15-16-21 & 22 I had an excess of 153 links in the 2 1/2 miles, I therefore run East on true line and at 4054 chains set stake for 1/4 Sec corner between Sec 22 & 15 and at 6081 chains set stake for 1/2 corner and at 8105 chains set stake for Sec corner to Sec 14-15-22 & 23, at 2022 chains set stake for 1/4 Sec corner and at 4022 set stake for 1/4 Sec corner between Sec 14 & 28 and at 8047 the Sec corner to Sec 13-14-23 & 24, I then started at 1/4 Sec corner between Sec 12 & 14 thence South setting stakes at 20-40-80 chains on East boundary of Sec 14 & 23 but found no original corner until I got to the sp line at 3 1/2 miles at which point I had an excess of 254 links I therefore run North and at 16133 chains set stake for permanent Sec. corner to Sec 23-24-25 & 26, thence North 4036 chains set stake for 1/4 Sec. corner between Sec 28 & 24 at 6054 chains set stake for 1/2 corner and at 8072 chains dug up old Sec. corner to 13-14-23 & 24 planted new stake be built mound dug pits &c. thence North and at 2018 chains set stake for 1/8 corner, having now re-established the true boundaries of Sec 22 & 23 I proceed to subdivide as per bill notion next page