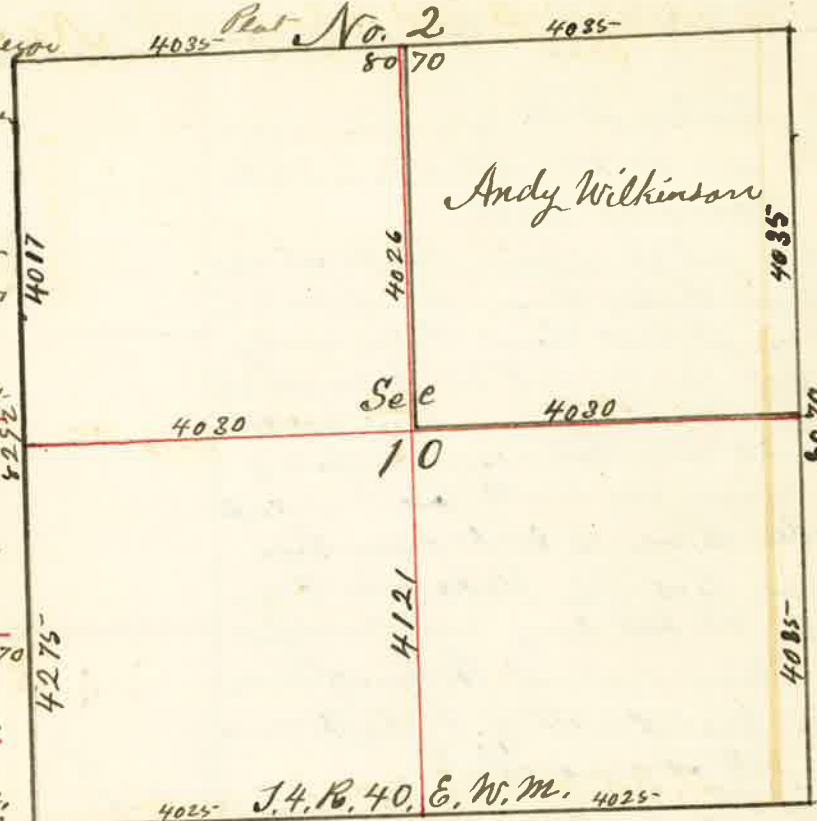


Surveyed for Andy Wilkinson March the 25th 1887

by J.W. Kimbrell Dep't Co. Surveyor

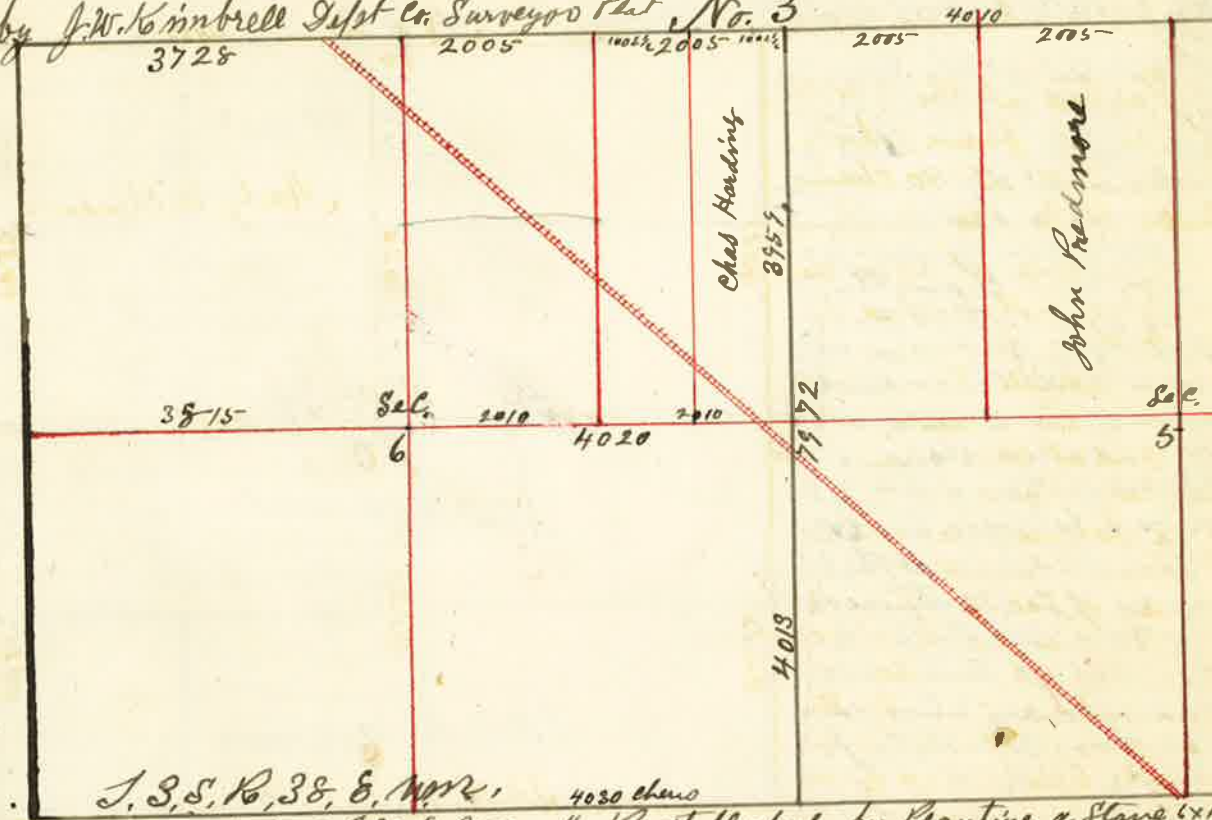


I started at the S.W. corner of Sec 10 from which I run East at 40 chains double stake for temporary 1/4 sec corner at 8050 chains Sec. corner established by M. Austin ex. Surveyor from which I run West on true line ~~var~~ 21° 15' East and at 4025 chains planted stone for 1/4 sec corner between Sec 10 & 15. I then started at S.E. corner of Sec. 10 thence North var 20° E. at 8070 chains the N.E. corner Sec 10 from which I run South and at 4085 chains the 1/4 sec corner established by M. Austin. I started at the N.E. corner of Sec. 10 thence West at 40 chains set temporary stake for 1/4 sec corner on North side of Sec 10 at 8070 chains the corner to Sec 9 = 10 = 38° 4' which is a stone in mound of stone. from which I run East on true line var 19° 45' East at 4035 chains planted stake for 1/4 sec corner between Sec. 10 & 3 I then started at N.W. corner of Sec 10 from which I run South var 19° E at 4017 chains and found the 1/4 corner by digging in the ground found point of stake and some charcoal. thence South 8292 the Sec. corner to 9 = 10 = 15° 8' 16" I then started at the 1/4 sec. corner on West side of Sec 10 from which I run East through the center of Sec 10 and at 40 chains set stake for temporary center at 8060 chains the 1/4 sec corner on East side of Sec. 10. I then started at the 1/4 sec corner on North side of Sec 10 from which I run South at 4026 chains I intersect. East & West line 30 links East of first-Boardman stake at 8147 chains the 1/4 sec corner on South side of Sec. 10 from which I run North on true line and at 4121 chains planted a stone for center of Sec 10 in mound of stone

J.W. Kimbrell Dep't Co. Surveyor

Surveyed for John Redmore Mar 29th and Chas Harding Mar 30th 1887

by J.W. Kimbrell Dep't Co. Surveyor Plat No. 3



The N.W. corner of T. 3 S. R. 38 E. N.W. 1/4 re-established by planting a stone 6x12x15 inches 12 inches in the ground from which a pine tree 24 inches bears N 65° E 15.2 links (an old pine stump 24 inches bears S 55° E 465 links and in place of this) I marked a pine 5 inches diameter bears S 51° 45' E 370 links distant.

I started at the 1/4 Sec. corner on North side of Sec. 5 from which I run West at 20 chains set temporary stake at 40 chains set temporary stake for Sec. corner for 5 = 6 = 31° 32' and at 1000 chains set temp. stake at 20 chains set temporary stake for 1/4 corner and 7748 chains the 1/4 corner to T. 2 S. R. 38 E. 37° 38' E. var being an excess of 32 links from the 1/4 sec corner started from 1/2 miles I therefore run East on true line and at 5733 chains I established the 1/4 corner by planting a stone 8x8x12 inches and at 7738 chains re-established the Sec. corner to Sec 5 = 6 = 31° 32' by planting a stone 7x10x22 inches 16 inches in the ground and at 2005 chains established the 1/4 corner from which a willow tree 21 inches bears N 55° E. 22 links distant I then started at the N.E. corner of Sec 6 from which I run South var 21° 30' E at 3945 set temporary stake for 1/4 sec corner at 7972 the Sec corner. from which I run North var 21° 30' E and at 4013 established 1/4 sec corner between Sec 5 & 6 thence West 1005 chains planted stone at 2000 planted stone for 1/4 corner. at 4020 a stone mound previously built for center of Sec. 6 and at 7885 the 1/4 sec corner on West side of Sec. 6

J.W. Kimbrell Dep't Co. Surveyor