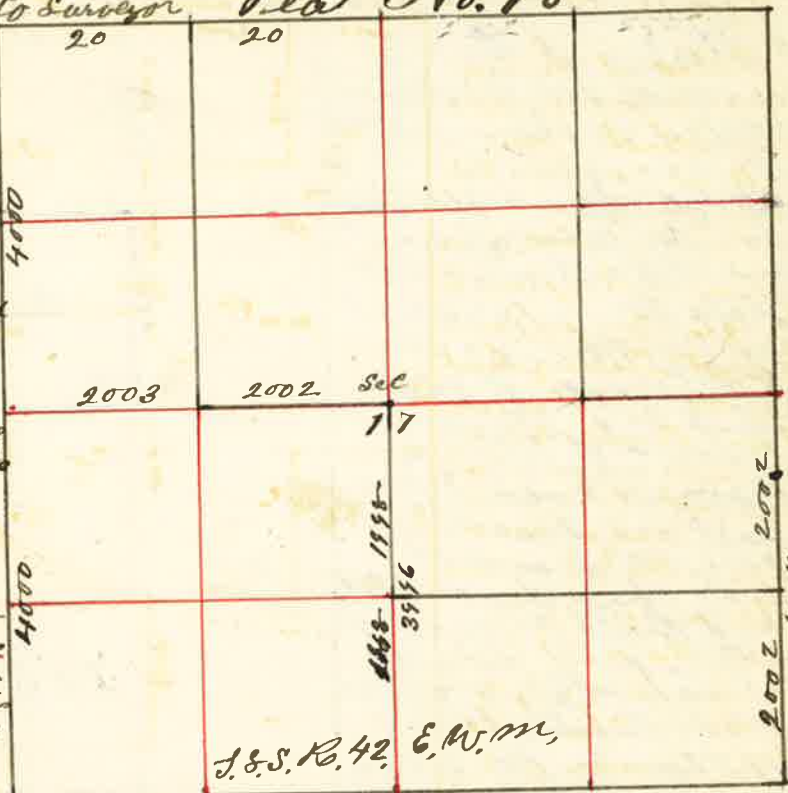


Surveyed for Thos. Keating Oct. the 20th 1887

by J.W. Kimbrell Dep't. Co Surveyor Plat No. 18

I started at the $\frac{1}{4}$ Sec. corner on East side of Sec. 17 thence south at 20 chains set stake for $\frac{1}{8}$ corner at 36 chains to the bank of Powder river 135 links across at 4004 chains south east corner of Sec. 17 from which I run north and at 2002 chains planted stake built mound of earth dug pits S, E, & N, W, of mound, for $\frac{1}{8}$ corner I then started at $\frac{1}{4}$ Sec. corner on south side of Sec. 17 thence north at 20 chains set stake for $\frac{1}{16}$ corner at 2118 chains Powder river 118 links across at 4000 chains set temporary stake for center of Sec. 17 I then started at $\frac{1}{4}$ Sec. corner on north side of Sec. 17 thence west at 20 chains set stake for temporary $\frac{1}{8}$ corner at 40 chains the Sec. corner drove stake and rebuilt mound dug pits N, E, N, W, S, E, S, W, of stake



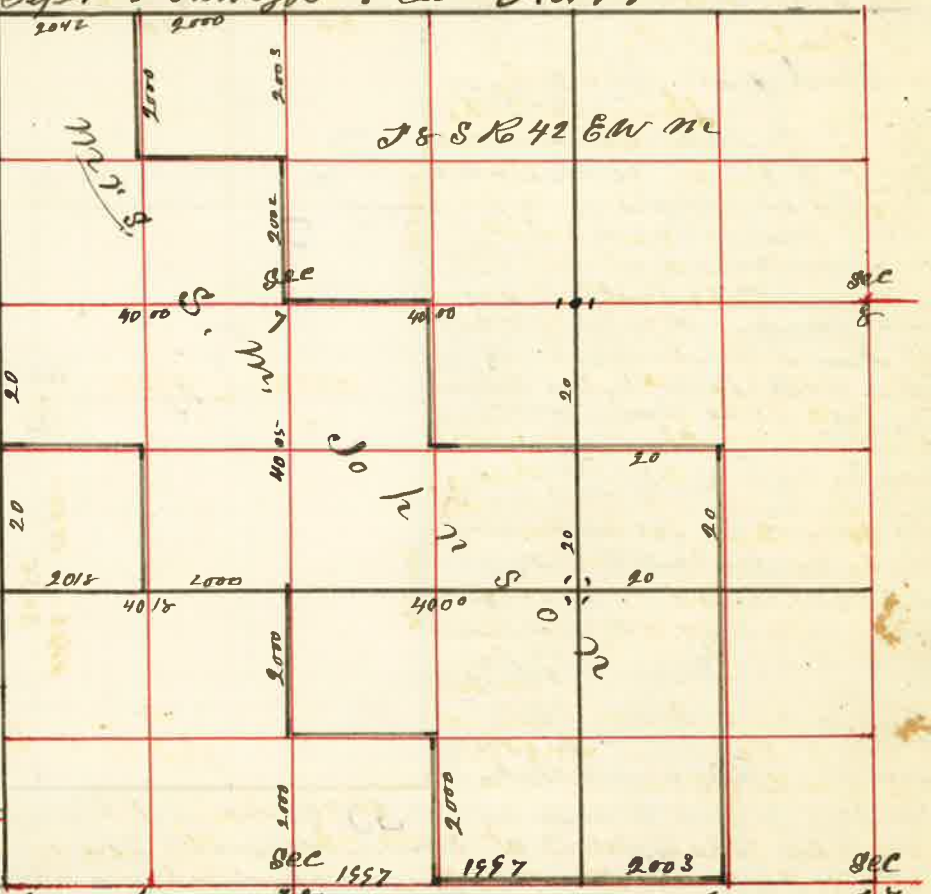
from which I run south at 40 chains set temporary $\frac{1}{4}$ Sec. corner on west side of Sec. 17 at 8000 chains the Sec. to 17-18-19 & 20 from which I run north at 40 chains drove stake in slough for $\frac{1}{4}$ Sec. corner between Sec. 17 & 18 from which I run east at 1063 chains Powder river 132 links across at 20 chains set stake for $\frac{1}{16}$ corner at 4005 chains the center of Sec. 17 4 links south of first mound stake for center. Planted stake built mound dug pits S, E, thence west 2002 chains planted stake dug pits S, E, for $\frac{1}{16}$ corner, from the center I run south and at 1998 chains planted stake built mound dug pits S, E, for $\frac{1}{16}$ corner.

J.W. Kimbrell Dep't. Co Surveyor

Surveyed for Mrs. S. M. Johnson Oct. the 21st 1887

by J.W. Kimbrell Dep't. Co Surveyor Plat No. 19

I started at the Sec. corner to Sec 7-8-17 & 18 from which I run north at 20 chains set stake for $\frac{1}{8}$ corner at 40 chains the $\frac{1}{4}$ Sec. corner I then proceeded to the S, E, corner of Sec. 7 the first starting point thence west at 1714 chains Powder River 146 links across at 2040 chains set stake for $\frac{1}{8}$ corner and at 4000 chains the $\frac{1}{4}$ Sec. corner between Sec. 7 & 18 at 60 chains set stake for temporary $\frac{1}{8}$ corner at 8018 chains the N, W, corner of Sec. 18, from which I run north, var 20° 30' E at 20 chains set stake



for $\frac{1}{8}$ corner at 40 chains the $\frac{1}{4}$ Sec. corner on west side of Sec. 7 from which I run east through center of Sec. 7 at 550 chains Powder River 132 links across at 1100 chains I offset north 790 links on account of thick willows and the river at 2600 chains set back on same line and on east bank of river fence across the river west 600 chains and drove stake for $\frac{1}{16}$ corner in thick willows I then started on same line at offset and continued my line east and at 40 chains set stake for center of Sec. 7 and at 60 chains set post for $\frac{1}{16}$ corner at 80 chains the $\frac{1}{4}$ Sec. corner on east side of Sec. 7. I then started at $\frac{1}{4}$ Sec. corner on south side of Sec. 7 from which I run north at 20 chains set stake for $\frac{1}{16}$ corner at 2925 chains Powder River 155 links across at 40 chains set stake for center 5 links south of first mound stake for center Sec. 7 at 60 chains set stake in front of school house for temporary $\frac{1}{8}$ corner at 8010 chains the $\frac{1}{4}$ Sec. corner on north side of Sec. 7 thence south 2002 chains and drove a stake near S, E, corner of school house. I then started at $\frac{1}{8}$ stake east of house between Sec. 8 & 17 thence north 20 chains set stake thence west to $\frac{1}{8}$ stake north of house 20 chains, I then started at $\frac{1}{4}$ Sec. corner on north side of Sec. 7 thence west at 20 chains set stake for $\frac{1}{8}$ corner at 4042 chains the Sec. corner N, W, corner of Sec. 7 thence east 2042 and set stake for $\frac{1}{8}$ corner thence south 20 chains and set stake for center of N, W, $\frac{1}{4}$ Sec. 7. I then started at $\frac{1}{4}$ Sec. corner on south side of Sec. 7 thence south at 20 chains drove stake for $\frac{1}{16}$ corner at 40 chains set stake for center thence east at 20 chains set stake at 3585 chains the $\frac{1}{4}$ Sec. corner between Sec. 17, 18, 19 from which I run west and at 1997 chains set a stake for $\frac{1}{16}$ corner from which I run north and at 20 chains set a stake for center of N, E, $\frac{1}{4}$ Sec. 18, S, S, R. 42, E. W. M.

J.W. Kimbrell Dep't. Co Surveyor