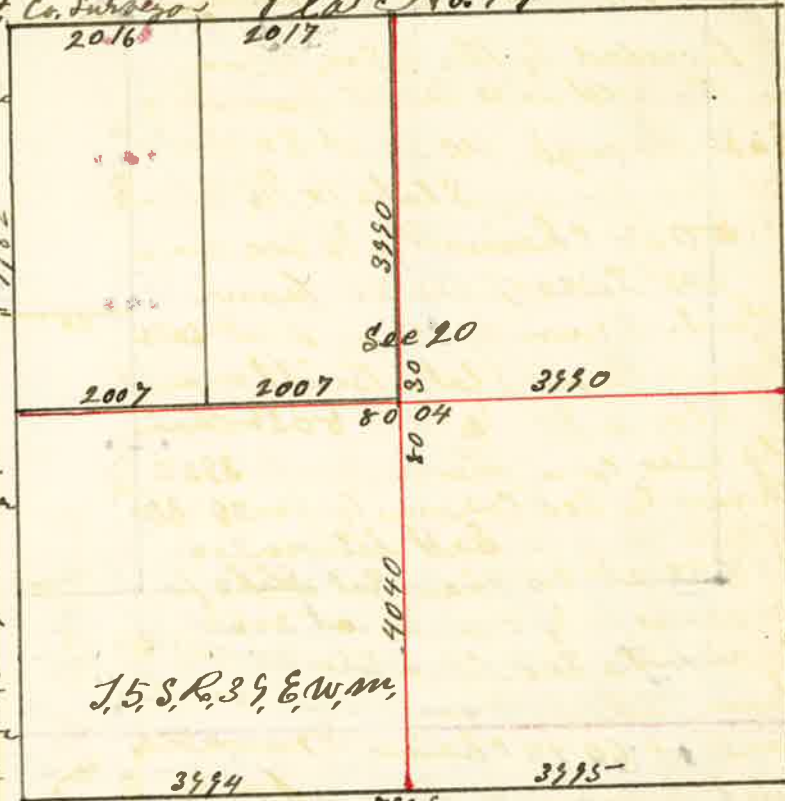


Surveyed for Show & Riggs Aug. the 30 1887

by J. W. Kimbrell Dep't. Co. Surveyor Plat. No. 14

I started at the 1/4 Sec. corner on North Side of Sec. 20 thence West at 20 chains set Stake for temporary 1/4 corner and at 4033 chains the Sec. corner to Sec 17-18-19 & 20 from which I run East and at 2016 chains planted Stake Built Mound of Stone, for 1/8 corner I then started at N.W. corner Sec. 20 thence South 7582 chains to 1/4 Sec. corner on West side of Sec. 20, I then started at the S.W. corner of Sec 20 thence East and at 40 chains set Stake for temporary 1/4 Sec. corner and at 7989 chains to the S.E. corner of Sec. 20 from which I run West on true line var 19° 45' E at 3995 chains set Stake from this I run North through center of Sec 20 at 40 chains set temporary Stake for center Sec. 20 and at 8080 chains the 1/4 Sec. corner on North Side of Sec. 20. I then proceeded to the 1/4 Sec. corner on East Side of Sec 20 thence West and at 3950 chains I intersect the true line running North & South through the center 40 links North of first random Stake and at 8004 chains the 1/4 Sec. corner on West Side of Sec 20 I therefore run East on true line var 19° 45' E and at 2007 chains planted a stone 4 1/2 x 5 x 14 inches 8 inches in the ground for 1/16 corner



J. W. Kimbrell Dep't. Co. Surveyor

Surveyed for J. R. Dawson Sept. the 16 1887

by J. W. Kimbrell Dep't. Co. Surveyor Plat. No. 15

I proceeded to the 1/4 Sec. corner on the west side Sec 32 from thence East through Sec 32 at 20 chains set temporary Stake for 1/16 corner at 8088 chains the 1/4 Sec. corner on East Side of Sec 32 from which I run West and at 6028 chains drove Stake Built mound of Stone for 1/8 corner 8032 chains the 1/4 Sec. corner thence North 3932 chains to Sec. corner to Sec 29-30-31 & 32 thence East between Sec 29 & 32 at 20 chains set Stake for temporary 1/8 corner at 8060 chains the Sec. corner to Sec 28-29-30 & 32 from which I run West on true line at 6045 chains drove Stake Built mound of Stone for 1/8 corner at 8060 the Sec. corner thence North between Sec 28 & 30 and at 3972 chains the 1/4 Sec. corner on West Side of Sec 29 thence East and at 20 chains Built mound of Stone around lot for 1/16 corner



J. W. Kimbrell Dep't. Co. Surveyor