

Surveyed for Chas Wilson May the 16 1890

by J.W. Kimball County Surveyor Plat No 100

T 5 S R 6 40 East 1/2 NW 1/4

I commenced at the 1/4 Sec corner bet Sec 2 & 11 which is gone but we establish the same by setting a volcanic rock 2 x 14 x 9 inches from which a pine original 8 ins dia to N 65° W 100 lks

Thence run N 11° 50' 30" through center Sec 2 var 20° E

1676 Bluff on south side of Catherine Creek 332 lks across to track of runway of sawmill near west end of sawmill

37 58 Intersect 44 lks East of the 1/16 corner in center of Sec 2 previously set by myself on survey made for C. S. Robbins Aug the 15 1888 & set out on page 46 from which I run S 12° 28' E on true line

18 43 Set witness corner 26 lks N 12° 28' W of true corner on Iron Bolt 3/4 inch diameter and 11 inches long from which

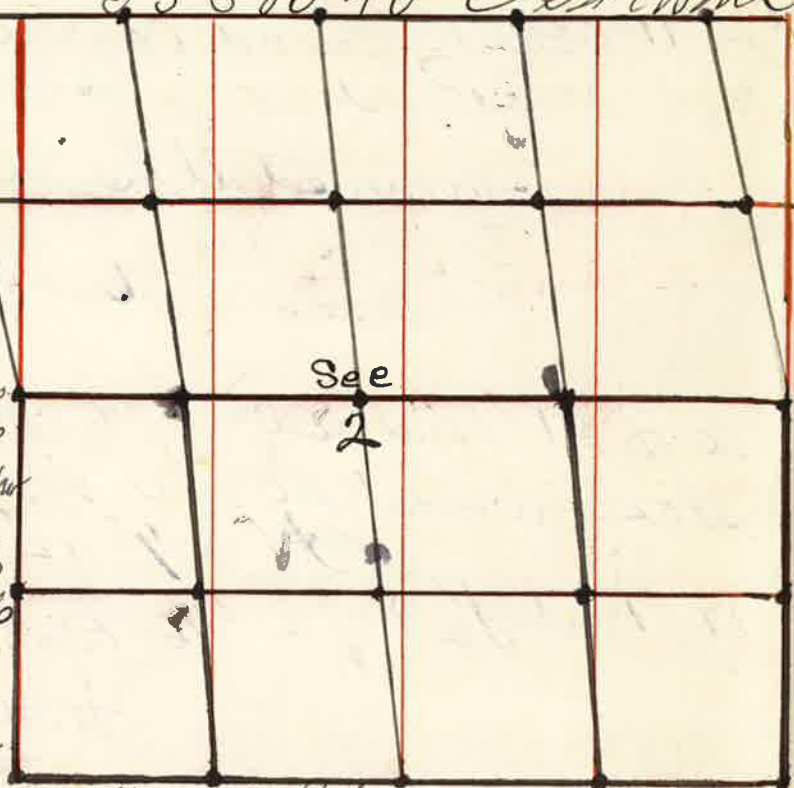
a pine 34 ins dia to S 13° 8' 190 lks this tree is also 164 lks N 13° 8' 164 lks dist from true corner in Catherine Creek

I commence at the corner to Sec 1-2-11 & 12 Thence North bet Sec 1 & 2 var 19° 45' E

421 Catherine Creek 118 lks across runs W

20 00 Set temporary 1/16 corner

39 63 Intersect 6 lks West of the 1/4 Sec corner bet Sec 1 & 2



Thence S 8° 0' 51" W on true line 188 1/2 Set Stone 23 x 10 x 6 inches for 1/16 corner 39 63 The corner to Sec 1-2-11 & 12

Thence South bet Sec 11 & 12 var 19° 30' E 20 00 Set temporary 1/16 corner

40 00 Intersect 65 lks East of the 1/4 Sec corner bet Sec 11 & 12 Thence N 0° 56' E on true line 20 00 Set Post marked 1/16 for 1/16 corner on W bdy N 8 1/4 Sec 11 from which I mark

a Pine 20 ins to S 49° W 52 lks dist - a Pine 20 " " N 26° W 57 lks "

40 00 The corner to Sec 1-2-11 & 12 I commence at the center of Sec 11 Thence West through the center Sec 11 var 20° E

40 00 Set temporary 1/16 corner for center Sec 11 80 15 Intersect 147 lks South of the 1/4 Sec corner bet Sec 10 & 11

Thence S 67° E on true line I commenced at the 1/4 Sec corner bet Sec 2 & 11 Thence South through center Sec 11 var 20° 30' E

20 00 Set temporary 1/16 corner 39 55 Intersect 51 lks East of the center stake previously set

80 83 Intersect 14 lks West of the 1/4 Sec corner bet Sec 11 & 14 from which a Pine 12 ins to S 87 1/2° E 32 lks dist - a Pine 8 " " N 58° E 58 " " Thence Run N 0 12' W on true line

61 05 Set Stone 24 x 12 x 12 for 1/16 corner in center N 1/2 Sec 11

J.W. Kimball County Surveyor