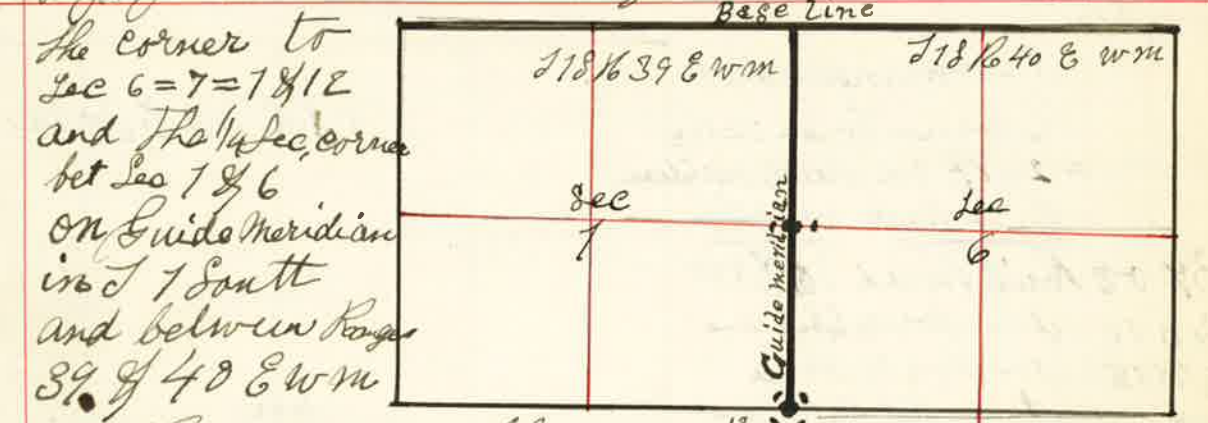


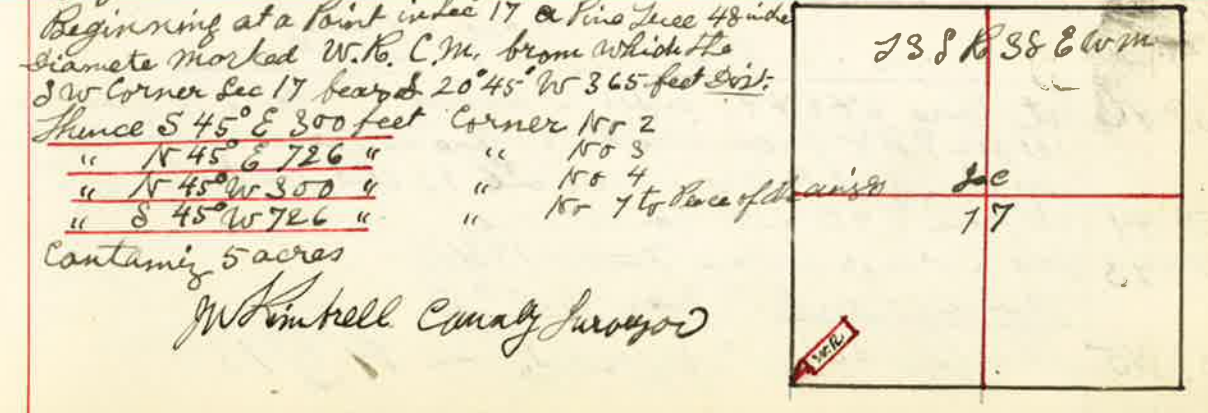
The $\frac{1}{4}$ Sec Corner bet Sec 28 & 26
 Thence West Var 20° E
 500 Second Steep Bluff 25 feet High Course South
 640 Slough runs South
 1900 East Bank of Eagle creek
 2000 Set temporary $\frac{1}{8}$ corner in old bed of Eagle
 2075 West Bank of Eagle creek
 3887 Intersect west boundary 84 lks South
 of corner to Sec 22 = 23 = 26 & 27
 from which I run
East 89°30' E Var 20° E
 1948 Set Stake for $\frac{1}{8}$ corner
 3887 The $\frac{1}{4}$ Sec corner bet Sec 23 & 26
 The $\frac{1}{8}$ corner on North boundary NW $\frac{1}{4}$ Sec 26
 Thence South Var 20° E
 223 The west bank of Eagle creek S 25° E
 2000 Set temporary $\frac{1}{8}$ corner
 4012 Intersect 56 lks west of $\frac{1}{8}$ corner in NW $\frac{1}{4}$ Sec 26
 from which I run North Var 20° E N 15° W
 2006 Set Post in Slough for $\frac{1}{8}$ corner in center NW $\frac{1}{4}$ Sec 26 from which
 a Cottonwood 15 in dia N 71° E 56 lks
 " 17 " " N 22½° W 101 lks
 4012 The $\frac{1}{8}$ corner on North boundary NW $\frac{1}{4}$ Sec 26
 The $\frac{1}{8}$ corner in center E $\frac{1}{2}$ Sec 26
 Thence South Var 20° E
 2000 Set temporary $\frac{1}{8}$ corner boundary S W $\frac{1}{4}$ Sec 26
 4021 The $\frac{1}{8}$ corner on South boundary from which
run North Var 20° E
 2010 Set Stone 6 x 8 x 16 inches to $\frac{1}{8}$ corner in center S $\frac{1}{4}$ Sec 20
 from which
 a Cottonwood 8 inches dia bears S 11½° W 108½ lks
 Nov. 14 1889
 J. W. Kimbrell County Surveyor

Surveyed for W. Bault Joel Weaver & S. Sturgis Nov 18 1889
 By J. W. Kimbrell County Surveyor Plat No 99



I Reestablished the same as follows
 The corner to Sec 6 = 7 = 18 1/2 Post decayed and
 mound and pits obliterated I planted stone 6 x 8 x 18
 inches 18 inches in the ground from which
 a Pine 30 inches dia bears S 20° E 274 lks
 " 42 " " S 42° W 427 "
 The $\frac{1}{4}$ Sec corner bet Sec 1 & 6
 Post decayed and bearing trees being cut down
 and destroyed U.S. Field Note are as follows
 $\frac{1}{4}$ Sec Post Corner bet Sec 1 & 6 from which
 a Pine 30 inches dia bears N 87° W 149 lks dist -
 " 20 " " " S 25° W 127 " "
 I therefore set Stone 8 x 8 x 22 inches from which
 a Pine 8 inches dia bears N 82° E 247 lks dist -
 " 5 " " " S 7° W 203 " "
 J. W. Kimbrell County Surveyor

Surveyed for Charles McConnell Nov. 20 1889
 By J. W. Kimbrell County Surveyor Plat No 100



Beginning at a Point in Sec 17 a Pine Tree 48 inches
 diameter marked W. K. C. M. from which the
 SW corner Sec 17 bears S 20° 45' W 365 feet dist:
 Thence S 45° E 300 feet corner NW 2
 " N 45° E 726 " " NW 3
 " N 45° W 350 " " NW 4
 " S 45° W 726 " " NW 7 to Pine of same size
 Containing 5 acres
 J. W. Kimbrell County Surveyor