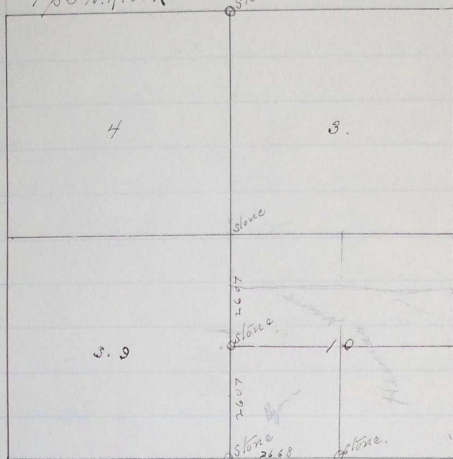


## PLAT AND RECORD OF SURVEY No. 139. 17

Survey made at request of

O S Dickerson. May 13

Chairman J. Graham.

T<sub>5</sub> N. R. 34 E.

Beginning at the N.E. Cor of Section 16  
T<sub>5</sub> N R 34 E at which point I exhumed  
old Charred Stake. I slanted a Stone  
18. X 12 X 12. I run N. 59° 46' E on true  
line between Sections 10 & 15. <sup>Set in at 1/4 Sec Cor</sup> to 22° 20' E

2668 Intersect 1/4 Sec Cor where I find remains  
of old Stake and plank Stone 22 X 16 X 12  
to separate corner.

71° 10' 5

I return to N.E. Cor of Sec 16. and run  
standard line back Sec 9 & 10.

2640 Set Stake for temp 1/4 Sec Cor could find  
no remains of old corner.

5280 Could find no vestige of old Cor  
Set Stake for temp corner 0

7940 No corner to be found

10428 Intersect Township line 507 feet to  
Cor to Sec 3 & 4

Making proper corrections I set  
a Stone for the Cor to Sec 3, 4, 9 & 10

Survey  
Degrees. Minutes. Chains. Links.

at 5214. and by division of this  
distance 2607 Sec 1/4 Sec Cor between 9810  
Beginning again at N.E. Cor of Sec 16 9  
run on true line

72.272

2607 Sec Stone for 1/4 Sec Cor 15x10x10

5214 Sec Stone for Cor to Sec 3.4.98.10. 16x12x8.

C. E. Macomber.

County Surveyor.