

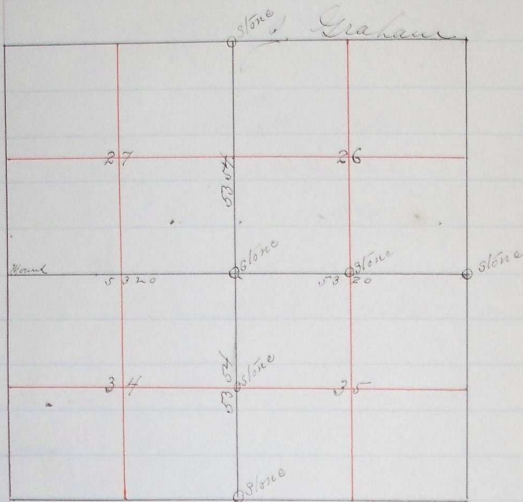
PLAT AND RECORD OF SURVEY No. 135

Survey made at request of

Course. Degrees. Minutes. Chains. Links.

Frank Dickerson & G. Dimmock May 12 1887

Chairman Est. Baulas



Beginning at the NW corner of Sec 26
 To 6 NR 34 E. W. W. thence
 on random line between Sec 26 & 27

72° 21' 05" E,

56 40 Set Temp 1/4 Sec Cor

58 80 I find no traces of any corner at this
 South which is in cultivated field and
 old residents informed, viz that corner
 was destroyed 20 years ago.

I continued South on random line

79 20 Set Temp 1/4 Sec Cor

107 08 Intersect Township line 20 feet East of
 Cor to Sec 24 & 25.

I next proceed to the corner of 27 21
 23 & 24 and chain line E, to Sec 24 & 27
 and 26 & 25 and find the two sections
 to be 10640 feet I divide this distance
 and 10708 the 74 South distance

Acres	Minutes	Chains	Links

and by the intersection of distances
I reestablished Cor to Section 26. 27. 24 305.
and Set Stone 18 x 12 x 10.

From this corner I run S on true
line between Sections 34 and 35

2677 Set Stone 10 x 10 x 10 in 1/4 Sec 34
and dug pits N & S.

L. E. Macomber,

County Surveyor.