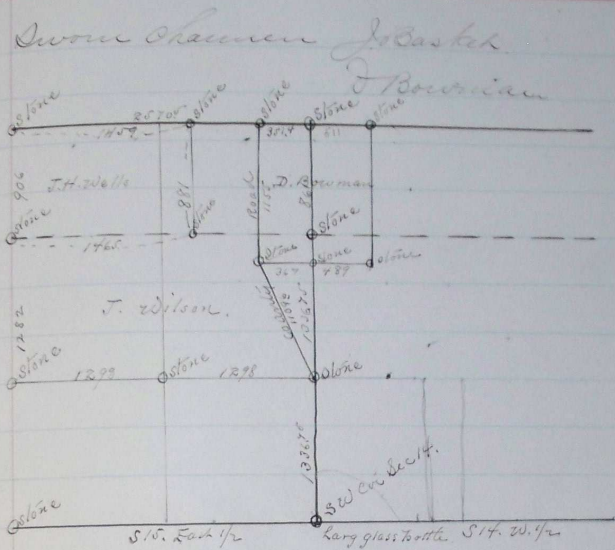


Made at request of B. Wells & J. Wilson

Dec 21, 1901.



Beginning at the S.W. Cor of Dec 14 Twp 6 N
Range 34³⁵ 51⁵ W. Thence N on true line
Sect Dec 14 & 15

- 1336.75 Set a Stone 6x6x10 for 1/6 Cor.
- 1367.35 Stone 7x7x12. Set for 1/4 Cor on line bet Dec
14 & 15. Thence 76.0°46'W on true
line bet Dec 14 & 15; intersect State line
- 13534.5 Stone of size and shape as may be marked with
cross on top. From this Cor. run W on true
line or state line.
- 13576.5 Intersect true 1/4 Cor on north line of true Dec
15. which is a Stone of size and shape as
may be. Said to have been set by Wilson.
Thence back I set true 1/6 Cor at
- 1235.3 a Stone 15x10x10 for true 1/6 Cor
Thence I repaired the 1/6 Cor on the
line bet Dec 14 & 15. and run west on
a random line through the center of the
S.W. of Dec 15.
- 1259.6 Set 7x8 center line of Dec 15. 40 feet

Courses	Days	Minutes	Chains	Links
---------	------	---------	--------	-------

north of Stone the $\frac{1}{4}$ Cor on N + South center
line of Trac Sec 15. Making proper correction
I set Stone 6x8x12 for $\frac{1}{4}$ Cor

From $\frac{1}{4}$ Cor on N + S center line of Sec 15

I run N + S on true center line of said Sec

12.12 A Stone of Size and Shape as may be
said to have been set by Wilson for $\frac{1}{4}$ Cor

21.18 Intersect State line at $\frac{1}{4}$ Cor on N line
of Sec 15.

From $\frac{1}{4}$ Cor on N + S center line Sec 15

I run east on true line of North of S $5\frac{1}{4}$

14.65 set a stone for S. E. Cor of tract of land
owned by C. H. Wells.

28.73 Intersect $\frac{1}{4}$ on East line of Sec 15.

I next proceed to Cor of Trac Sect

14. & 15 on State line and run west
on true line

35.74 Set a stone 12x7x6 to mark center of County
road Thence $50^{\circ}28'$ E on center line of said
County Road To a Stone set to mark SW Cor Bowman

11.55. Thence S. $19^{\circ}41'$ To Stone set for Road angle

11.95 on East line of Sec 15.

From Trac Sec Cor of 14 and 15 on State
line I run.

East

5.11 To a Stone set in N.E. Cor of land owned by
D Bowman Thence I run south along
E line of Bowman's land

11.55 To a Stone for a corner Thence

West

8.56 To Stone set for road angle and S.W. Cor
of Bowman's land.

L. E. Ell 2 corners
County Surveyor