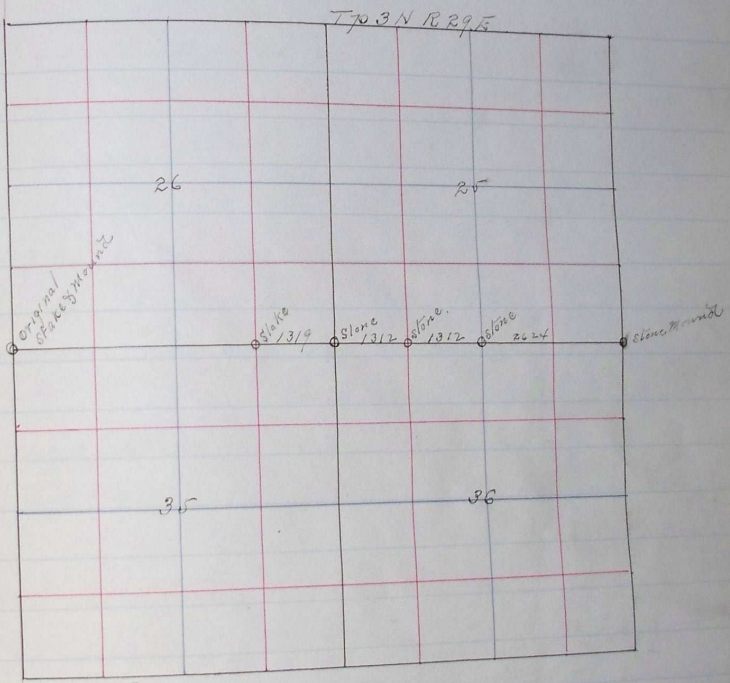


Wm. M. Miller Esq.

Degrees Minutes ~~Seconds~~ Links  
 Feet

Survey made Oct 21 to 23. 1900.  
 Sworn Chairman Henry Miller  
 Marcus Drullman  
 Sworn Flagman J. W. Strain



Beginning on the Co of Sections 25, 26, 35, 36 where I found stake with signal mound and pits. To perpetuate this corner I planted a Larch Stone 24 x 10 x 12. twenty inches in the ground and thence run East on random line between sections 25 & 36.

- 13 20 Set temp 1/6 Co
  - 26 40 Set " 1/4 "
  - 32 48 Set N & S line 120 feet S of Co to Sec 25 & 36
- Thence west on true line back Sec 25 & 36

PLAT AND RECORD OF SURVEY No. 7379

Course.	Degrees.	Minutes.	Chains.	Links.	
					2624 Set a Tensath Stone 18x12x8 for 1/4 Sec Cor.
					3936 Set a Tensath Stone 14x10x6. 1/6 " "
					5248 To Cor of Sec 25, 36, 35, 26. Thence
Wash.					On trial line between Sections 26 & 35 via 21° E
					5276 Intersect X D S line at Corner Thence
Fish.					2638 a Corn in Unatatta River.
					3954 Set a Post 4x7 inches Square and 4 feet long
					in 1/6 Corn. From last named
					Cor I ran north on random line
					1320 Set a post for temporary corner
					this corner was satisfactory to all
					Santos concerned and as they did
					not wish me to subdivide Sec 26, I
					did not do so.

L. E. Macomber  
County Surveyor.