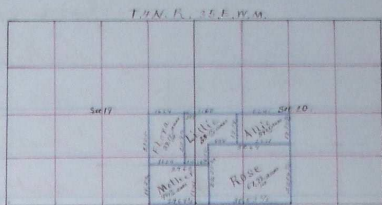
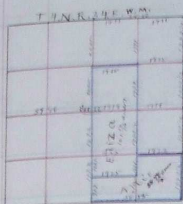


PLAT AND RECORD OF SURVEY No. 73

Surveyed For the P. Ely Estate for the purpose of dividing for heirs
By request of C. M. Ely Executor or administrator

April the 10-11 & 12 1895



I Commenced at the corner to Secs 19-20-29th & 30

Hence North on random line bet Secs 19 & 20

Var 21° E.

16 25 Set Temporary fractional corner

40 50 could find No 1/4 Sec corners Set Temporary 1/4 Sec cor

80 73 Intersect 257 lbs west of the corners to Secs 17-18-19th & 20

S 1° 51' W on True line

40 37 Set Stone 17x7x6 for 1/4 Sec cor bet Secs 19th & 20

64 32 Set Stone 16x8x7 for fractional corner

80 73 The corner to Secs 19-20-29th & 30

Hence East bet Secs 20th & 29 on random line

Var 21° E

960 Set Temporary fractional corner

20 50 Set Temporary 1/16 corner

40 18 I intersect 14 lbs North of the 1/4 Sec corner point rec'd at stake
by setting Stone 14x7x6 for 1/4 Sec cor

N 89° 48' W on True line

20 09 Set Stone 12x6x6 for 1/16 corner

30 58 Set Stone 16x8x7 for fractional cor.

40 18 The corner to Secs 19-20-29th & 30

from the 1/4 Sec corner bet Secs 20 & 29 I run

North on random line through center 20

Var 19° 26' E

22 36^{3/4} Set Temporary fraction cor

40 00 Set Temporary 1/16 cor for center Sec 20

88 60 I intersect 48 lbs west of the 1/4 Sec cor bet Secs 17 & 20

Course	Degrees	Minutes	Chains	Links
--------	---------	---------	--------	-------

Course

S 02° W on true line through center Sec 20

from the 1/4 Sec cor bet Sec 19 & 20 True

East on random line through center Sec 20

17 85 Set temporary fractional corner

40 65 Intersect True N 88° S line 24 chs North of first stake set on 1851 line

78 27 Intersect 24 chs North of the 1/4 Sec cor bet Sec 20 & 21

thence N 89° 50' W on True line through center Sec 20

37 62 Set Stone 14 x 8 x 6 for 1/16 cor in center Sec 20

60 08 Set Stone for fractional cor.

South

17 79 Set Stone 15 x 7 x 6 for fractional cor

East

22 31 Set Stone 17 x 6 x 5 for fractional cor 176 7/8 chs South of Center Sec 20

I commenced at the 1/4 Sec corner bet Sec 19 & 20

thence west

34 6 1/2 Set Stone for fractional corner

20 10 Set Stone 16 x 8 x 6 for 1/16 corner

thence South through center S E 1/4 Sec 19

or 20° 55' E

23 75 Set temporary fractional corner

37 50 Wild Horse creek runs W

40 20 Intersect 39 chs East of 1/16 corner about

N 85° E on true line

16 32 Set Stone 22 x 12 x 8 for fractional cor
East

16 54 Set Stone 20 x 8 x 6 for fractional cor

29 70 Set Stone 16 x 8 x 6 for fractional cor North

6 15 Set Stone 16 x 6 x 7 for fractional cor East

8 38 Set Stone 17 x 8 x 5

John Whitehead surveyor
Barry Winkler chainman
C. W. 37. Hagan