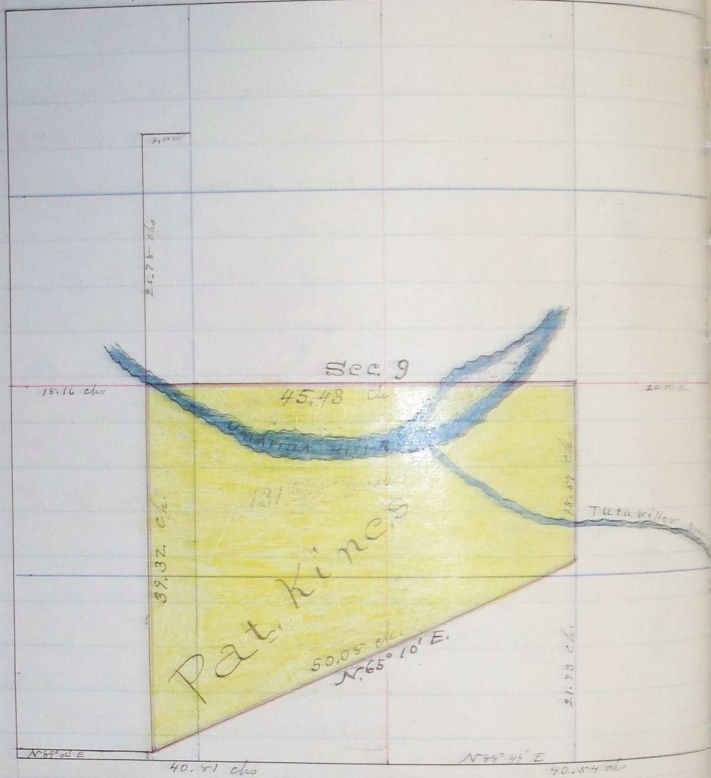


PLAT AND RECORD OF SURVEY No. 65

By Request of Pat Kine Aug 28th 1874

Course. Degrees. Minutes. Chains. Links.

J. D. N., R. 32, E. W. M.



I Commenced at the corner to Sec 9-10-15 916
 which is a Stone in mound of Earth with Pts B & C
 thence N 86° 20' W on random line bet Sec 9 & 10
 Nor 21° 35' E

- 4 00 boreal course N. E.
- 6 00 Road S 25° W
- 11 50 Road an boreal N. E.
- 20 00 bet temporary 1/4 corner on summit of ridge bet
- 25 00 boreal S. W.
- 39 50 " S. W.
- 40 54 Intersect 174 lbs North of 1/4 cor. bet Sec 9 & 10
 N 88° 50' E on true line
- 1 00 boreal course S. W.

Chains Links

- 5 00 Point of ridge SW
- 15 00 borehole SW
- 20 27 Set stake for Point of 1/4 corner 48 1/2 south of wire fence in field
not top of ridge course N. 4. S.
- 29 25 borehole course NE
- 34 40 borehole course SW^a & NE
- 36 50 borehole " NE
- 40 54 the corner to be 9-10-15^a & 16

I commence at the 1/4 cor bet bet 9 & 16
Thence west on random line bet bet 9 & 16

- 10 00 Point of ridge course South
- 14 25 borehole course South
- 20 50 ridge " SW
- 25 00 Set temporary Fractional corner
- 26 50 foot of hill enter Mc Kay creek bottom
- 30 40 Irrigation Ditch runs North
- 40 81 Intersect 68 1/2 N. of corner to be 8-9-16^a & 17
from which

a cottonwood 20 ins dia bet S 45° E 111 1/2 dist
" " " " N 83° 45' W 170 " "
Thence I run N 89° or E on True line

- 15 30 Set stake for Fractional corner
Thence North on East boundary of Dr. W. C. McKay's
Donation Claim No. 38
- 1 00 Set Stone for S.E. corner of donation claim
and S.W. corner of Pat. Keine's Land
- 1 75 borehole runs west
- 10 00 ridge course W
- 12 00 borehole " SW
- 18 00 Top of ridge course N. W. S. S. E.

Course.	Degree: Minutes.	Chains.	Links.
---------	------------------	---------	--------

- | | | | |
|----|----|---|---|
| 39 | 66 | Bank on South or left bank of Umatilla river course | W |
| 42 | 16 | North or right bank of " " " | |
| 66 | 10 | Intersect 29 lbs west of fractional corner to Making do
Thence I run S 22 1/2 W on true line | |
| 23 | 94 | Umatilla river 210 lbs across | |
| 25 | 78 | Set stake in mound of Stone fractional corner
or Pat Kines' N W corner and shows S W corner | |
| 65 | 10 | The fractional corner and Pat Kines' S W corner
which is also S E corner of Donation claim | |

I commence at the corner to Sec. 9-10-15-16
Thence north bet Sec 9 and 10

- | | | | |
|----|----|---|--|
| 20 | 00 | to Closing corner on North boundary U.S. bet Sec 9 & 10
on left bank of Salawitlow creek | |
| 23 | 33 | South side of Webb Street | |
| 24 | 24 | North side of Webb Street | |
| 31 | 12 | North boundary of Recreation Add. to Bondleton | |
| 31 | 50 | Slough or Spring branch course west | |
| 32 | 40 | North bank of Slough | |
| 40 | 30 | The 1/4 sec corner bet Sec 9 & 10 a Stone in bed of Slough
Thence West through centre Sec 9
Var 22° 15' E | |
| 17 | 67 | Slough 180 lbs across course S.W. | |
| 20 | 00 | Set temporary 1/4 corner | |
| 26 | 03 | left bank of Umatilla river 264 lbs across course S.W. | |
| 44 | 83 | Slough 200 lbs across course 88° W | |
| 47 | 83 | Slough 68 " " " 85° W | |
| 56 | 50 | Umatilla river course N 80° W | |
| 65 | 43 | Intersect - True N 80° line 98 lbs south of Stone corner | |
| 80 | 57 | Intersect - 120 lbs south of the 1/4 sec ex bet Sec 8 & 9
Thence S 89° 01' E on true line | |

PLAT AND RECORD OF SURVEY No. TAJ 9

Dist.	Degrees	Minutes	Chains	Links
-------	---------	---------	--------	-------

- | | | | | |
|----|----|--|--|--|
| 15 | 16 | | | The N.W. corner of Pat Kinies Land |
| 60 | 59 | | | The $\frac{1}{16}$ corner or Pat Kinies N.E. corner in center of E 1/2 Sec 9 |
| 80 | 59 | | | The $\frac{1}{4}$ Sec corner bet Sec 9 & 10 |

I commence at the $\frac{1}{16}$ corner Point on South Boundary
of the S. E. $\frac{1}{4}$ Sec 9
Thence North through center S. E. $\frac{1}{4}$ Sec 9.

- | | | | | |
|----|----|--|--|--|
| 21 | 73 | | | Intersect U.R. boundary |
| 40 | 30 | | | The $\frac{1}{16}$ corner in center of E 1/2 Sec 9 P. Kinies N.E. corner
Thence South on East Boundary of P. Kinies Land |
| 18 | 57 | | | Set Stone for fractional corner Pat. Kinies S.E. cor.
Thence S $65^{\circ} 10'$ W on Pat. Kinies South Boundary
ascend |

- | | | | | |
|----|----|--|--|--|
| 7 | 00 | | | Point of fall course N |
| 10 | 40 | | | Swale course N.W. |
| 22 | 10 | | | Summit of ridge N.W. & S.E. |
| 42 | 00 | | | Swale course S.W. |
| 48 | 00 | | | Same Swale " West |
| 49 | 30 | | | To angle No 70 North Body of U. R. Note 12 + 10 + 10
Thence west on South Body me to any Donation Claim |
| 15 | 25 | | | Mackay creek runs NW |
| 19 | 45 | | | left bank of Mackay creek |

- | | | | | |
|----|----|--|--|--|
| 56 | 08 | | | find Moody's NW cor. Pointe from which Nolan & Curran came
Bears S $15^{\circ} 30'$ W 9.3 Mbs distant |
|----|----|--|--|--|

John W. Tomnhill County Surveyor
Thos. Jaques chairman
Gray Tomnhill "
W. L. Jaques Flagman

131 $\frac{54}{110}$ acres