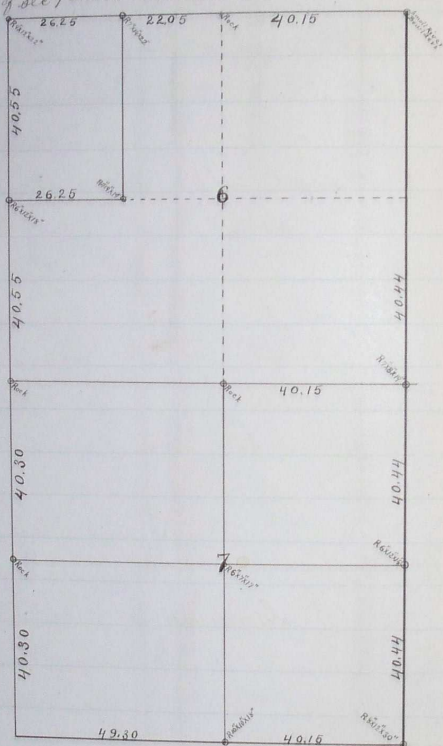


PLAT AND RECORD OF SURVEY No. 7719
 Surveys for Lorage, Kauffman, Clark, Kemmer & Allen March 2nd 4th 1885

Course. Degree. Minutes. Chain. Links.

Survey for Lorage & Kauffman marking off 105 rods from the West side of the N.W. 1/4 sec. 6 T. 3. R. 27. Also subdivision of sec 7 T. 3. R. 27. In case of sec 6 sworn chainmen were G. B. Teal and Neil McMillen. In case of sec 7 sworn chainmen were Thomas Clark and D. H. Kemmer.



Begins at the N.W. corner of sec 6 T. 3. R. 27. The old government mound and pits having disappeared during a flood the spot where the post for corner stood was pointed out to me by Messrs Lorage and David Kauffman they agreeing in their statements the place agreed well with fences running North and South and West. On digging down at the point shown as corner I found remnants of charred wood. This combined evidence I considered too strong to set aside and set a corner by survey, and I therefore renewed

Course	Degrees	Minutes	Chains	Links	
					the corner by setting a rock 9"x12"x22" on the spot and placing a blittle with a figure 4 blown on the bottom underneath the rock.
					Thence
East	26	25			Set temporary post
	48	50			Come upon a rock undoubtedly set for the $\frac{1}{4}$ sec corner
	58	45			N. & cor. of sec. 6. Find charred stake in corner
			130 feet		Renew N. & cor. of sec. 6 by placing near a peck measure full of small river boulders in the ground. Thence on true line
West	40	15			Rock at $\frac{1}{4}$ S corner
	62	20			Set Rock 7"x14"x22"
	88	45			Township corner. Thence on random line
South	40	00			Set temp. post
	87	10			Intersect sec. line 33 links W. of corner marked by a rock hence I move temp. post for $\frac{1}{4}$ S cor. on West side of sec. 6 55 links south and 16 $\frac{1}{2}$ links East and set a rock 6"x12"x18" for $\frac{1}{4}$ S corner on the edge of water ditch running West. Thence
East	26	25			Set rock 7"x9"x18" for S. & cor. of land sold by Louage to Knapp
					Sub-division of section 7 L.S.R. 27.
South	283	08			Learning that the old government corners on the East side of Section 7 were all lost I began at the government quarter post between sections 6 & 5 and run on random lines making extensive search by digging for government corners until we measured 300 chs West of cor. to sections 12, 22, 27, 30. This governm ^{ent} is well marked by mound pits and charred stakes. This sec. cor. is located East nearly 3 $\frac{1}{2}$ chs of the sec. line as outlined plainly by fences and old ditch fences both North and South of it and I therefore assume the distance 288 ^{ch} to be correct and divide it into seven equal parts to reestablish the government corners along the East side of sections 6, 7, 12, 18. But reject it as a governing point in establishing a line from the East quarter post of sec. 6 southward. In order to reestablish

	Course.	Degrees. Minutes.	Chains.	Links.	
					the government corners from the east quarter part of sec 6 southward I measure from the South 45 of sec 6 east 40 15 ch and through this point rerun the line from the E 45 of sec 6
South	40	44			set Rock 7x8x11" for N.E. cor of sec 7
	80	88			set Rock 6x12x15" with iron rock underneath for E 45 to sec 7
	121	32			set Rock 8x12x30 charcoal underneath for S.E. cor to sec 7
	161	76			set Rock 6"x8"x12" with small rock and glass underneath for East 45 to sec 18
					Begin at the S.E. cor of sec 7 as established and run
West	40	15			set temp post Government ^{corner} obliterated
	89	00			set temp post Government corner in sand and obliterated
					Begin at rock at N.W. cor sec 7 and run
South	40	00			set temp post Government corner in sand and gone
	80	00			set temp post
	120	00			Government corner obliterated
	161	29			Intersect sec line 135 links West of sec. cor. which I removed by rebuilding mound. Thence on true line
North	80	60			Made point for sec. corner
	120	40			Set Rock - cracked in two pieces - also round fence post marked 4/5 by the rock
	161	20			N.W. cor of sec 7.
					Resuming random line on the south side of sec 7
West	89	45			Intersect sec. line 48 links north of where Point was made for sec. corner. hence I move temp. point 22 links south for 4/5 between sec 7 and 18 and set a rock 10x10x15" with charcoal under it.
					Having erected flag poles at the North south East and West quarter corners of section and all of them being visible from the center of the section I place my transit in line between the opposite flag poles and find the center corner of section at the intersection of the cross lines where I set Rock above
					I hereby certify the foregoing record and plat to be true
					P. Zahner Dept. Co. Surv.